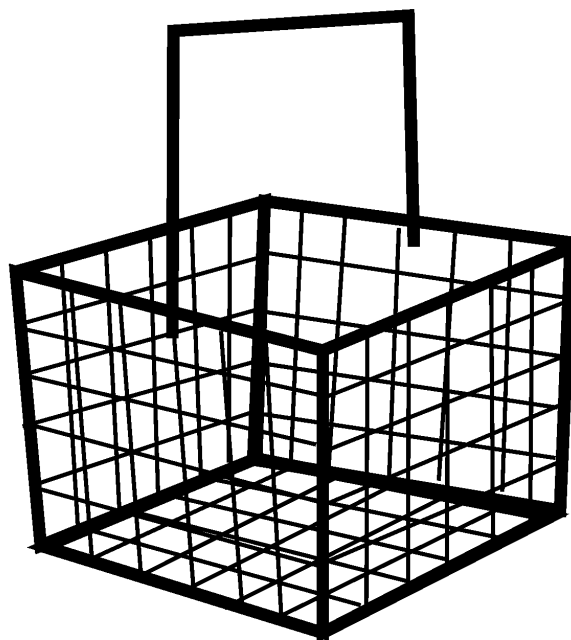


## 3/2, 5/2 and 5/3 Valves, Series CD 7, G1/4 / M14x1,5

### Technical data



# 3/2, 5/2 and 5/3 Valves, Series CD 7, G1/4 / M14x1,5

3/2-way valve, single solenoid, option: ATEX

**Rexroth**  
Bosch Group



## Technical Data

Type	Spool valve	
Working pressure range	See table	
Nominal flow rate Q <sub>n</sub> at 6 bar (87 psi), Δp = 1 bar (15 psi)	1400 l/min (1.4 Cv)	
Ambient temperature range	-25 °C to +50 °C (-13 °F to +122 °F)	
Medium	Compressed air, lubricated or non-lubricated	
Weight	0,54 kg (1.190 lbs)	
Materials	Body Seals	Zn-diecasting NBR (Nitrile Butadiene Rubber)
Operating voltages	50 Hz 60 Hz	DC ±10% AC -20% +10% AC -10% +20%
Power consumption	24 V DC	2,14 W
Inrush power	220/230 V AC 50/60Hz	6,6 / 5,5 VA
Holding power	220/230 V AC 50/60Hz	4,18 / 3,3 VA
Insulation class	F to VDE 0580	
Protection with el. connector	IP 65 to DIN VDE 0470	
Duty cycle	ED	100%
Switching times	t <sub>F</sub> fill	29 ms
	t <sub>E</sub> exhaust	45 ms



## Application area

Suitable for all applications. The valve is non-overlapping and suitable for double pressure. According to the requirements from the explosion protection directive 94/9/EG (ATEX 95) and to an internal danger assessment report subject to EN 13463-1, the basic valves 577 20 . 530 2 taking into consideration the common directives for equipment in ex-areas can be used in Ex areas zones 2 and 22 (category 3GD) as well as in zones 1 and 21 (category 2GD). Please find suitable coils according the explosion protection directive 94/9/EG in table below.

## Part no.



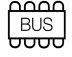
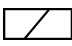
	External pilot	Working pressure range [bar] (psi)	Voltage and frequency	Part no.* G1/4	Part no.* M14x1,5
	Without	3 to 10 (44 to 145)	24 V DC	<b>5772070220</b>	<b>5772020220</b>
			220/230 V AC 50 / 60 Hz	<b>5772075280</b>	<b>5772025280</b>
			Basic valve without coil <sup>1)</sup>	<b>5772075302</b>	<b>5772025302</b>
	With	-0,95 to +10 (-14 to 145) Pilot pressure ≥ 3	24 V DC	<b>5772080220</b>	<b>5772030220</b>
			220/230 V AC 50 / 60 Hz	<b>5772085280</b>	<b>5772035280</b>
			Basic valve without coil <sup>1)</sup>	<b>5772085302</b>	<b>5772035302</b>

\* without electrical connector <sup>1)</sup> ... see product overview

# 3/2, 5/2 and 5/3 Valves, Series CD 7, G1/4 / M14x1,5

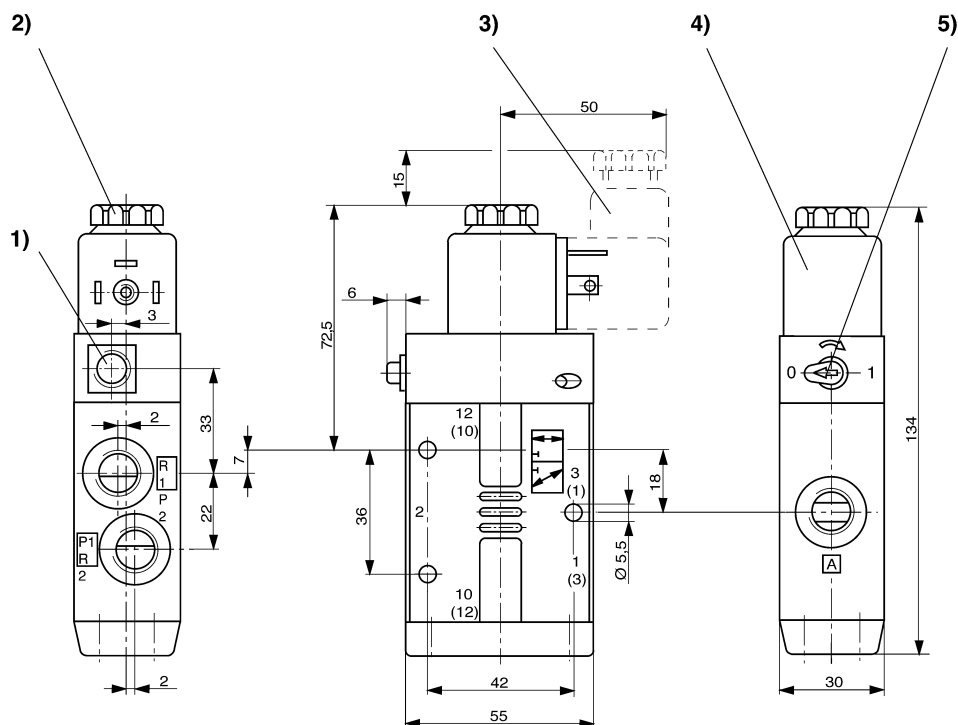
3/2-way valve, single solenoid, option: ATEX

**Rexroth**  
Bosch Group

▲ Accessories (to be ordered separately)						
Accessory	Type	Part no.				
	spare parts kit kit to de-activate the manual override spare parts ... <sup>2)</sup>	<b>5772020002</b> <b>5420900002</b>				
	voltages	24 V DC	220/230 V AC	all voltages		
	connectors to DIN 43650, Form A and with LED other connectors ... <sup>1)</sup>	<b>8941000302</b> <b>8941016102</b>	<b>8941000302</b> <b>8941016112</b>	<b>8941000302</b>		
	voltages	24 V DC				
	for BUS- systems adapter					
	contact bridge, with sensor input and 0,2 m cable	<b>8946053622</b>				
	contact bridge, with sensor input and 1,0m cable	<b>5763503113</b>				
	contact bridge, with sensor input and 5,0m cable	<b>5763523113</b>				
	contact bridge, without sensor input and 0,2 m cable	<b>5763513133</b>				
	voltages	12 V DC	24 V DC	48 V DC	110 V DC	220 V DC
	coils with increased voltage tolerances	<b>5420507012</b>	<b>5420507022</b> <b>5420707022</b>	<b>5420507032</b> <b>5420707032</b>	<b>5420507072</b> <b>5420707072</b>	<b>5420507082</b> <b>5420707082</b>
	voltages	24 V AC	48 V AC	110/115 V AC	220/230 V AC	
	coils with increased voltage tolerances	<b>5428457022</b>	<b>5428457042</b>	<b>5428457072</b> <b>5428307072</b>	<b>5428457082</b> <b>5428307082</b>	
	voltages	24 V DC	24 V AC	110/115 V AC	220/230 V AC	
	with ATEX coil with 3 m cable <sup>3)</sup> with 10 m cable <sup>3)</sup> with electrical connector <sup>4)</sup>	<b>1827414303</b> <b>1827414304</b> <b>R412000144</b>	<b>1827414301</b> <b>1827414302</b> <b>R412000145</b>	<b>1827414299</b> <b>1827414300</b> <b>R412000146</b>	<b>1827414297</b> <b>1827414298</b> <b>R412000147</b>	

<sup>1)</sup>... see product overview <sup>2)</sup>... see separate spare parts catalogue <sup>3)</sup>ATEX-standard: II 2G EEx m IIC T5, II 3D IP65 T95°C X, ambient temperature range: -20°C to +50°C (-4 °F to +122 °F)(single mounting)

<sup>4)</sup> ATEX-standard: II 3G EEx nA IIB T4, II 3D IP65 T125°C X, ambient temperature range: -10 °C to +50 °C (14 °F to +122 °F)



1) Only with external pilot G 1/8. 2) After removal of cap M5 internal thread. 3) El. connector can be fixed at 90° intervals.  
4) Coil can be fixed at 45° intervals. 5) Manual override.

# 3/2, 5/2 and 5/3 Valves, Series CD 7, G1/4 / M14x1,5

5/2-way valve, single solenoid, option: ATEX

**Rexroth**  
Bosch Group



## Technical Data

Type	Spool valve	
Working pressure range	See table	
Nominal flow rate Q <sub>n</sub> at 6 bar (87 psi), Δp = 1 bar (15 psi)	1200 l/min (1.2 Cv)	
Ambient temperature range	-25 °C to +50 °C (-13 °F to +122 °F)	
Medium	Compressed air, lubricated or non-lubricated	
Weight	0,57 kg (1.257 lbs)	
Materials	Body Seals	Zn-diecasting NBR (Nitrile Butadiene Rubber)
Operating voltages	50 Hz 60 Hz	DC ±10% AC -20% +10% AC -10% +20%
Power consumption	24 V DC	2,14 W
Inrush power	220/230 V AC 50/60Hz	6,6 / 5,5 VA
Holding power	220/230 V AC 50/60Hz	4,18 / 3,3 VA
Insulation class	F to VDE 0580	
Protection with el. connector	IP 65 to DIN VDE 0470	
Duty cycle	ED	100%
Switching times	t <sub>f</sub> fill	29 ms
	t <sub>e</sub> exhaust	45 ms



## Application area

Suitable for all applications. The valve is non-overlapping and suitable for double pressure. According to the requirements from the explosion protection directive 94/9/EG (ATEX 95) and to an internal danger assessment report subject to EN 13463-1, the basic valves 577 60 . 530 2 taking into consideration the common directives for equipment in ex-areas can be used in Ex areas zones 2 and 22 (category 3GD) as well as in zones 1 and 21 (category 2GD). Please find suitable coils according the explosion protection directive 94/9/EG in table below.

## Part no.


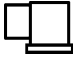
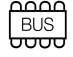
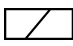

	External pilot	Working pressure range [bar] (psi)	Voltage and frequency	Part no.* G1/4	Part no.* M14x1,5
	Without	3 to 10 (44 to 145)	24 V DC	<b>5776070220</b>	<b>5776020220</b>
			220/230 V AC 50 / 60 Hz	<b>5776075280</b>	<b>5776025280</b>
			Basic valve without coil <sup>1)</sup>	<b>5776075302</b>	<b>5776025302</b>
	With	-0,95 to +10 (-14 to +145 psi) Pilot pressure ≥ 3 (44)	24 V DC	<b>5776080220</b>	<b>5776030220</b>
			220/230 V AC 50 / 60 Hz	<b>5776085280</b>	<b>5776035280</b>
			Basic valve without coil <sup>1)</sup>	<b>5776085302</b>	<b>5776035302</b>

\* Without electrical connector. <sup>1)</sup> Usable coils see accessories.

# 3/2, 5/2 and 5/3 Valves, Series CD 7, G1/4 / M14x1,5

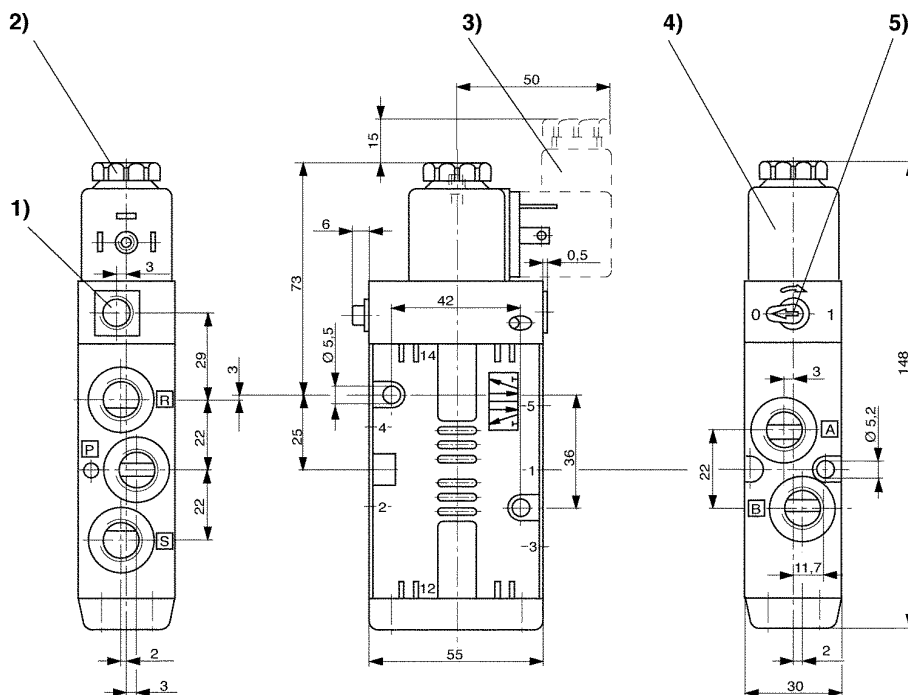
5/2-way valve, single solenoid, option: ATEX

**Rexroth**  
Bosch Group

▲ Accessories (to be ordered separately)						
Accessory	Type	Part no.				
	spare parts kit kit to de-activate the manual override	<b>5776020002</b>				
	spare parts <sup>2)</sup>	<b>5420900002</b>				
	voltages		24 V DC	220/230 V AC	all voltages	
	connectors to DIN 43650, Form A and with LED other connectors ... <sup>1)</sup>	<b>8941000302</b> <b>8941016102</b>		<b>8941000302</b> <b>8941016112</b>	<b>8941000302</b>	
	voltages		24 V DC			
	for BUS- systems Adapter			<b>8946053622</b>		
	Contact bridge, with sensor input and 0,2 m cable			<b>5763503113</b>		
	Contact bridge, with sensor input and 1,0m cable			<b>5763513113</b>		
	Contact bridge, with sensor input and 5,0m cable			<b>5763523113</b>		
	Contact bridge, without sensor input and 0,2 m cable			<b>5763513133</b>		
	voltages		12 V DC	24 V DC	48 V DC	110 V DC
	coils	<b>5420507012</b>		<b>5420507022</b>	<b>5420507032</b>	<b>5420507072</b>
	with increased voltage tolerances			<b>5420707022</b>	<b>5420707032</b>	<b>5420707072</b>
	voltages		24 V AC	48 V AC	110/115 V AC	220/230 V AC
	coils	<b>5428457022</b>		<b>5428457042</b>	<b>5428457072</b>	<b>5428457082</b>
	with increased voltage tolerances			<b>5428307072</b>	<b>5428307082</b>	
	voltages		24 V DC	24 V AC	110/115 V AC	220/230 V AC
	with ATEX coil					
	with 3 m cable <sup>3)</sup>	<b>1827414303</b>		<b>1827414301</b>	<b>1827414299</b>	<b>1827414297</b>
	with 10 m cable <sup>3)</sup>	<b>1827414304</b>		<b>1827414302</b>	<b>1827414300</b>	<b>1827414298</b>
	with electrical connector <sup>4)</sup>	<b>R412000144</b>		<b>R412000145</b>	<b>R412000146</b>	<b>R412000147</b>

<sup>1)</sup>... see product overview <sup>2)</sup>... see separate spare parts catalogue <sup>3)</sup>ATEX-standard: II 2G EEx m IIC T5, II 3D IP65 T95°C X, ambient temperature range: -20°C to +50°C (-4 °F to +122 °F) (single mounting)

<sup>4)</sup> ATEX-standard: II 3G EEx nA IIB T4, II 3D IP65 T125°C X, ambient temperature range: -10 °C to +50 °C (14 °F to +122 °F)



1) Only with external pilot G 1/8. 2) After removal of cap M 5 internal thread. 3) El. connector can be fixed at 90° intervals.  
4) Coil can be fixed at 45° intervals. 5) Manual override.

# 3/2, 5/2 and 5/3 Valves, Series CD 7, G1/4 / M14x1,5

5/2-way valve, double solenoid, option: ATEX

**Rexroth**  
Bosch Group



## Technical Data

Type	Spool valve	
Working pressure range	See table	
Nominal flow rate Q <sub>n</sub> at 6 bar (87 psi), Δp = 1 bar (15 psi)	1200 l/min (1.2 Cv)	
Ambient temperature range	-25 °C to +50 °C (-13 °F to +122 °F)	
Medium	Compressed air, lubricated or non-lubricated	
Weight	0,75 kg (1.653 lbs)	
Materials	Body Seals	Zn-diecasting NBR (Nitrile Butadiene Rubber)
Operating voltages	50 Hz 60 Hz	DC ±10% AC -20% +10% AC -10% +20%
Power consumption	24 V DC	2,14 W
Inrush power	220/230 V AC 50/60Hz	6,6 / 5,5 VA
Holding power	220/230 V AC 50/60Hz	4,18 / 3,3 VA
Insulation class	F to VDE 0580	
Protection with el. connector	IP 65 to DIN VDE 0470	
Duty cycle	ED	100%
Switching times	t <sub>F</sub> fill	22 ms
	t <sub>E</sub> exhaust	22 ms



## Application area

Suitable for all applications. The valve is non-overlapping and suitable for double pressure. According to the requirements from the explosion protection directive 94/9/EG (ATEX 95) and to an internal danger assessment report subject to EN 13463-1, the basic valves 577 62 . 530 2 taking into consideration the common directives for equipment in ex-areas can be used in Ex areas zones 2 and 22 (category 3GD) as well as in zones 1 and 21 (category 2GD). Please find suitable coils according the explosion protection directive 94/9/EG in table below.

## Part no.

	External pilot	Working pressure range [bar] (psi)	Voltage and frequency	Part no.* G1/4	Part no.* M14x1,5
	Without	3 to 10 (44 to 145)	24 V DC	<b>5776270220</b>	<b>5776220220</b>
			220/230 V AC 50 / 60 Hz	<b>5776275280</b>	<b>5776225280</b>
			Basic valve without coil <sup>1)</sup>	<b>5776275302</b>	<b>5776225302</b>
	With	-0,95 to +10 (-14 to +145) Pilot pressure ≥ 3 (44)	24 V DC	<b>5776280220</b>	<b>5776230220</b>
			220/230 V AC 50 / 60 Hz	<b>5776285280</b>	<b>5776235280</b>
			Basic valve without coil <sup>1)</sup>	<b>5776285302</b>	<b>5776235302</b>

\* Without electrical connector <sup>1)</sup> Usable coils see accessories



# 3/2, 5/2 and 5/3 Valves, Series CD 7, G1/4 / M14x1,5

5/3-way valve, double solenoid, option: ATEX

**Rexroth**  
Bosch Group



## Technical Data

Type	Spool valve	
Working pressure range	See table	
Nominal flow rate Q <sub>n</sub> at 6 bar (87 psi), Δp = 1 bar (15 psi)	900 l/min (0.9 Cv)	
Ambient temperature range	0 °C to +50 °C (32 °F to +122 °F)	
Medium	Compressed air, lubricated or non-lubricated	
Weight	0,72 kg (1.587 lbs)	
Materials	Body / Seals	Zn-diecasting / NBR (Nitrile Butadiene Rubber)
Operating voltages	DC ±10%	
	50 Hz	AC -20% +10%
	60 Hz	AC -10% +20%
Power consumption	24 V DC	2,14 W
Inrush power	220/230 V AC 50/60Hz	6,6 / 5,5 VA
Holding power	220/230 V AC 50/60Hz	4,18 / 3,3 VA
Insulation class	F to VDE 0580	
Protection with el. connector	IP 65 to DIN VDE 0470	
Duty cycle	ED 100%	



## Application area

Suitable for all applications. The valve is non-overlapping and suitable for double pressure. Suitable for valve units.

According to the requirements from the explosion protection directive 94/9/EG (ATEX 95) and to an internal danger assessment report subject to EN 13463-1, the basic valves 577 77 . 530 2 and

577 79 . 530 2 taking into consideration the common directives for equipment in ex-areas can be used in

Ex areas zones 2 and 22 (category 3GD) as well as in zones 1 and 21 (category 2GD).

Please find suitable coils according the explosion protection directive 94/9/EG in table below.

## Part no.

	External pilot	Working pressure range [bar] (psi)	Voltage and frequency	Part no.*
	Without	3 to 10 (44 to 145)	24 V DC 220/230 V AC 50 / 60 Hz basic valve without coil <sup>1)</sup>	<b>5777760220</b> <b>5777765280</b> <b>5777765302</b>
	With	-0,95 to 10 (-14 to 145)	basic valve without coil	<b>5777945302</b>
	Without	3 to 10 (44 to 145)	24 V DC 220/230 V AC 50 / 60 Hz basic valve without coil <sup>1)</sup>	<b>5777770220</b> <b>5777775280</b> <b>5777775302</b>
	With	-0,95 to 10 (-14 to 145)	basic valve without coil	<b>5777955302</b>
	Without	3 to 10 (44 to 145)	24 V DC 220/230 V AC 50 / 60 Hz basic valve without coil <sup>1)</sup>	<b>5777750220</b> <b>5777755280</b> <b>5777755302</b>



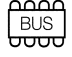
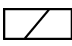

\* without electrical connector <sup>1)</sup> usable coils see accessories



# 3/2, 5/2 and 5/3 Valves, Series CD 7, G1/4 / M14x1,5

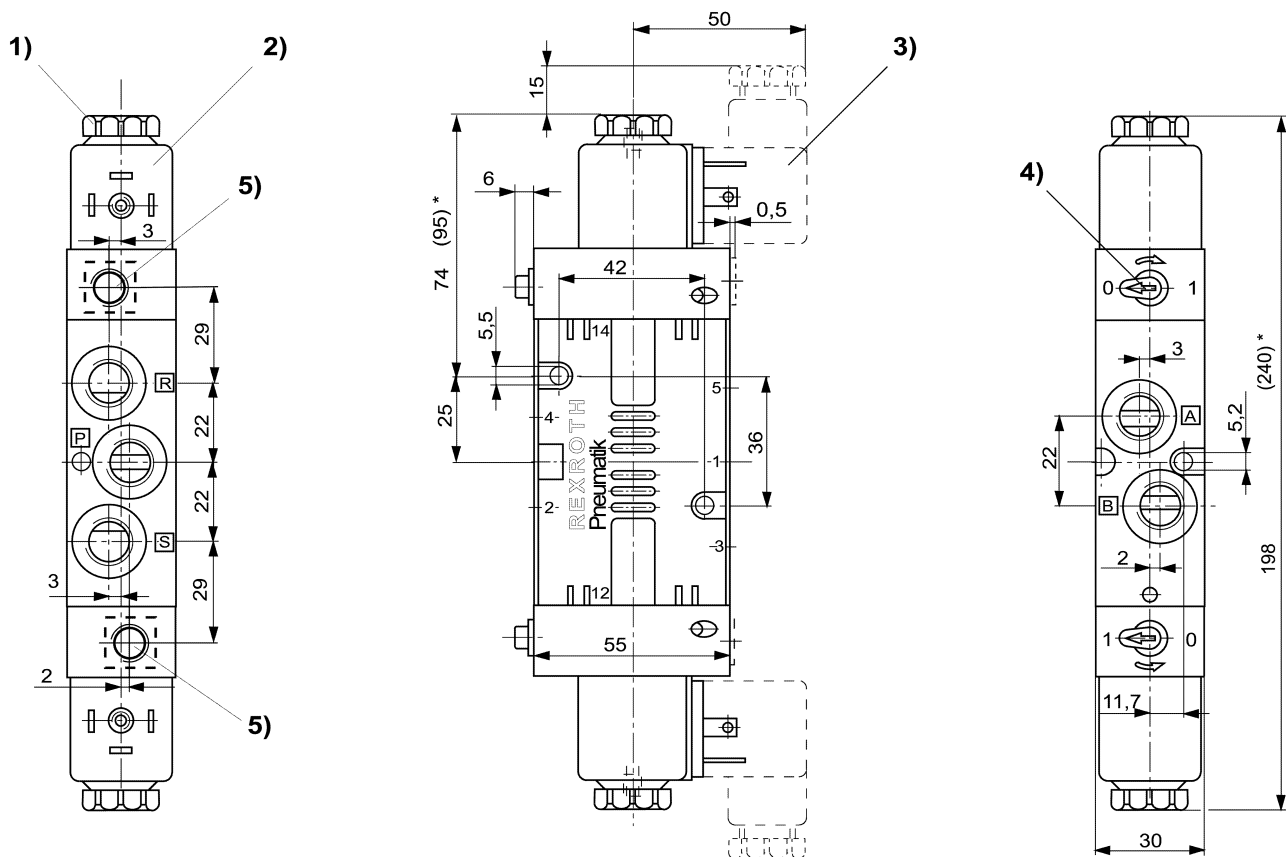
5/3-way valve, double solenoid, option: ATEX

**Rexroth**  
Bosch Group

▲ Accessories (to be ordered separately)						
Accessory	Type	Part no.				
	spare parts kit kit to de-activate the manual override	<b>5777750002</b>				
	spare parts ... <sup>2)</sup>	<b>5420900002</b>				
	voltages	24 V DC	220/230 V AC	all voltages		
	connectors to DIN 43650, Form A and with LED	<b>8941000302</b>	<b>8941000302</b>	<b>8941000302</b>		
	other connectors ... <sup>2)</sup>	<b>8941016102</b>	<b>8941016112</b>	<b>8941016112</b>		
	voltages	24 V DC				
	for BUS- systems adapter		<b>8946053622</b>			
	contact bridge, with sensor input and 0,2 m cable		<b>5763503113</b>			
	contact bridge, with sensor input and 1,0m cable		<b>5763513113</b>			
	contact bridge, with sensor input and 5,0m cable		<b>5763523113</b>			
	contact bridge, without sensor input and 0,2 m cable		<b>5763513133</b>			
	voltages	12 V DC	24 V DC	48 V DC	110 V DC	220 V DC
	coils	<b>5420507012</b>	<b>5420507022</b>	<b>5420507032</b>	<b>5420507072</b>	<b>5420507082</b>
	with increased voltage tolerances		<b>5420707022</b>	<b>5420707032</b>	<b>5420707072</b>	<b>5420707082</b>
	voltages	24 V AC	48 V AC	110/115 V AC	220/230 V AC	
	coils	<b>5428457022</b>	<b>5428457042</b>	<b>5428457072</b>	<b>5428457082</b>	
	with increased voltage tolerances			<b>5428307072</b>	<b>5428307082</b>	
	voltages	24 V DC	24 V AC	110/115 V AC	220/230 V AC	
	with ATEX coil					
	with 3 m cable <sup>3)</sup>	<b>1827414303</b>	<b>1827414301</b>	<b>1827414299</b>	<b>1827414297</b>	
	with 10 m cable <sup>3)</sup>	<b>1827414304</b>	<b>1827414302</b>	<b>1827414300</b>	<b>1827414298</b>	
	with electrical connector <sup>4)</sup>	<b>R412000144</b>	<b>R412000145</b>	<b>R412000146</b>	<b>R412000147</b>	

<sup>1)</sup>... see product overview <sup>2)</sup>... see separate spare parts catalogue <sup>3)</sup>ATEX-standard: II 2G EEx m IIC T5, II 3D IP65 T95°C X, ambient temperature range: -20°C to +50°C (-4 °F to +122 °F) (single mounting)

<sup>4)</sup> ATEX-standard: II 3G EEx nA IIB T4, II 3D IP65 T125°C X, ambient temperature range: -10 °C to +50 °C (14 °F to +122 °F)



1) After removal of cap M 5 internal thread. 2) Coil can be fixed at 45° intervals. 3) El. connector can be fixed at 90° intervals.  
4) Manual override.

# 3/2, 5/2 and 5/3 Valves, Series CD 7, G1/4 / M14x1,5

5/2-way valve, NAMUR standard, option: ATEX

**Rexroth**  
Bosch Group



## Technical Data

Type	Spool valve	
Working pressure range	3 to 10 bar (44 to 145 psi)	
Nominal flow rate Q <sub>n</sub> at 6 bar (87 psi), Δp = 1 bar (15 psi)	900 l/min. (0.9 Cv)	
Ambient temperature range	-25 °C to +50 °C (-13 °F to +122 °F)	
Medium	Compressed air, lubricated or non-lubricated	
Weight	0,6 kg (1.323 lbs)	
Materials	Body Seals	Zn-diecasting NBR (Nitrile Butadiene Rubber)
Operating voltages	50 Hz 60 Hz	DC ±10% AC -20% +10% AC -10% +20%
Power consumption	24 V DC	2,14 W
Inrush power	220/230 V AC 50/60Hz	6,6 / 5,5 VA
Holding power	220/230 V AC 50/60Hz	4,18 / 3,3 VA
Insulation class	F to VDE 0580	
Protection with el. connector	IP 65 to DIN VDE 0470	
Duty cycle	ED	100%
Switching times	t <sub>F</sub> fill	29 ms
	t <sub>E</sub> exhaust	45 ms



## Application area

The valve is non-overlapping and suitable for dual pressure. According to the requirements from the explosion protection directive 94/9/EG (ATEX 95) and to an internal danger assessment report subject to EN 13463-1, the basic valves 577 660 530 2 taking into consideration the common directives for equipment in ex-areas can be used in Ex areas zones 2 and 22 (category 3GD) as well as in zones 1 and 21 (category 2GD). Please find suitable coils according the explosion protection directive 94/9/EG in table below.

## Part no.

	Voltage and frequency	Part no.*
	24 V DC	<b>5776600220</b>
	220/230 V AC 50 / 60 Hz	<b>5776605280</b>
	basic valve without coil <sup>1)</sup>	<b>5776605302</b>

\* without electrical connector <sup>1)</sup> usable coils see accessories

## Accessories (to be ordered separately)

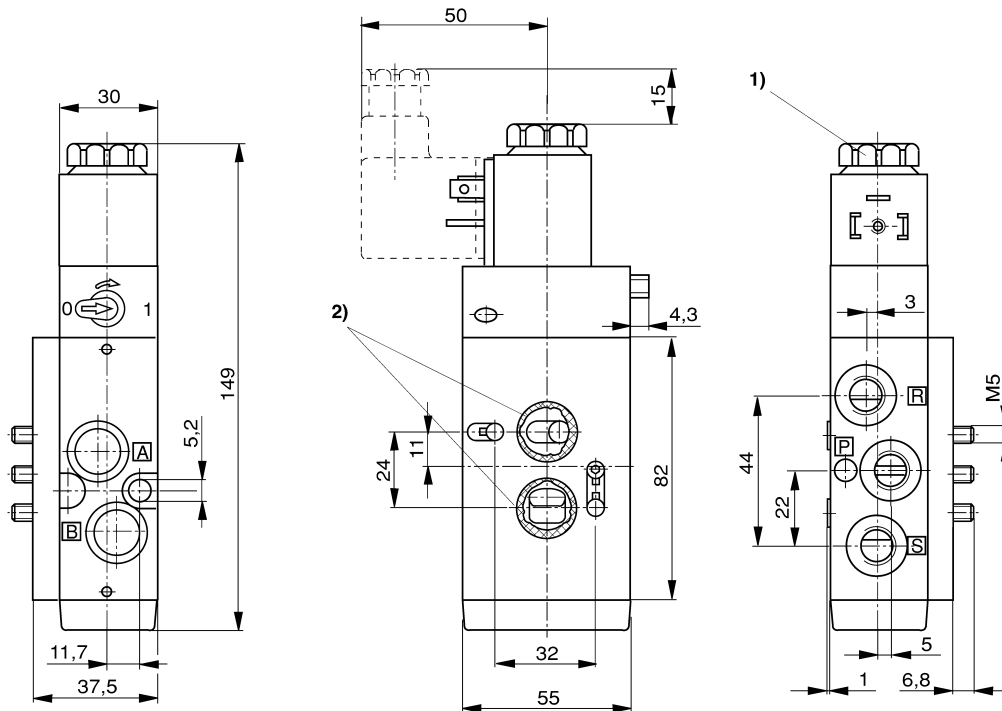
Accessory	Type	Part no.				
	spare parts kit	<b>5776020002</b>				
	kit to de-activate the manual override	<b>5420900002</b>				
	spare parts ... <sup>2)</sup>					
	voltages	24 V DC	220/230 V AC	all voltages		
	connectors to DIN 43650, Form A and with LED	<b>8941000302</b> <b>8941016102</b>	<b>8941000302</b> <b>8941016112</b>	<b>8941000302</b>		
	other connectors ... <sup>2)</sup>					
	voltages for BUS- systems adapter		24 V DC			
	contact bridge, with sensor input and 0,2 m cable		<b>8946053622</b>			
	contact bridge, with sensor input and 1,0m cable		<b>5763503113</b>			
	contact bridge, with sensor input and 5,0m cable		<b>5763523113</b>			
	contact bridge, without sensor input and 0,2 m cable		<b>5763513133</b>			
	voltages	12 V DC	24 V DC	48 V DC	110 V DC	220 V DC
	coils with increased voltage tolerances	<b>5420507012</b>	<b>5420507022</b>	<b>5420507032</b>	<b>5420507072</b>	<b>5420507082</b>
	voltages	24 V AC	48 V AC	110/115 V AC	220/230 V AC	
	coils with increased voltage tolerances	<b>5428457022</b>	<b>5428457042</b>	<b>5428457072</b>	<b>5428457082</b>	
	voltages	24 V DC	24 V AC	110/115 V AC	220/230 V AC	
	with ATEX coil with 3 m cable <sup>3)</sup>	<b>1827414303</b>	<b>1827414301</b>	<b>1827414299</b>	<b>1827414297</b>	
	with 10 m cable <sup>3)</sup>	<b>1827414304</b>	<b>1827414302</b>	<b>1827414300</b>	<b>1827414298</b>	
	with electrical connector <sup>4)</sup>	<b>R412000144</b>	<b>R412000145</b>	<b>R412000146</b>	<b>R412000147</b>	

<sup>1)</sup>... see product overview <sup>2)</sup>... see separate spare parts catalogue <sup>3)</sup>ATEX-standard: II 2G EEx m IIC T5, II 3D IP65 T95°C X, ambient temperature range: -20°C to +50°C (-4 °F to +122 °F) (single mounting)

<sup>4)</sup> ATEX-standard: II 3G EEx nA IIB T4, II 3D IP65 T125°C X, ambient temperature range: -10 °C to +50 °C (14 °F to +122 °F)

# 3/2, 5/2 and 5/3 Valves, Series CD 7, G1/4 / M14x1,5

5/2-way valve, NAMUR standard, option: ATEX



1) After removal of cap M5 internal thread    2) Threaded pin DIN 914 M5 x 20, O-ring 16 x 2 (supplied with the valve)

# 3/2, 5/2 and 5/3 Valves, Series CD 7, G1/4 / M14x1,5

5/2-way valve, double solenoid, NAMUR standard, option: ATEX

**Rexroth**  
Bosch Group



## Technical Data

Type	Spool valve	
Working pressure range	2 to 10 bar (29 to 145 psi)	
Nominal flow rate Q <sub>n</sub> at 6 bar (87 psi), Δp = 1 bar (15 psi)	900 l/min. (0.9 Cv)	
Ambient temperature range	-25 °C to +50 °C (-13 °F to +122 °F)	
Medium	Compressed air, lubricated or non-lubricated	
Weight	0,8 kg (1.764 lbs)	
Materials	Body Seals	Zn-diecasting NBR (Nitrile Butadiene Rubber)
Operating voltages	50 Hz 60 Hz	DC ±10% AC -20% +10% AC -10% +20%
Power consumption	24 V DC	2,14 W
Inrush power	220/230 V AC 50/60Hz	6,6 / 5,5 VA
Holding power	220/230 V AC 50/60Hz	4,18 / 3,3 VA
Insulation class	F to VDE 0580	
Protection with el. connector	IP 65 to DIN VDE 0470	
Duty cycle	ED	100%
Switching times	t <sub>F</sub> fill	22 ms
	t <sub>E</sub> exhaust	22 ms



## Application area

The valve is non-overlapping and suitable for dual pressure. According to the requirements from the explosion protection directive 94/9/EG (ATEX 95) and to an internal danger assessment report subject to EN 13463-1, the basic valves 577 662 530 2 taking into consideration the common directives for equipment in ex-areas can be used in Ex areas zones 2 and 22 (category 3GD) as well as in zones 1 and 21 (category 2GD). Please find suitable coils according the explosion protection directive 94/9/EG in table below.

## Part no.

	Voltage and frequency	Part no.*
	24 V DC	<b>5776620220</b>
	220/230 V AC 50 / 60 Hz	<b>5776625280</b>
	Basic valve without coil <sup>1)</sup>	<b>5776625302</b>

\* without electrical connector <sup>1)</sup> usable coils see accessories

## Accessories (to be ordered separately)

Accessory	Type	Part no.				
	spare parts kit	<b>5776220002</b>				
	kit to de-activate the manual override spare parts ... <sup>2)</sup>	<b>5420900002</b>				
	voltages	24 V DC	220/230 V AC	all voltages		
	connectors to DIN 43650, Form A and with LED other connectors ... <sup>2)</sup>	<b>8941000302</b> <b>8941016102</b>	<b>8941000302</b> <b>8941016112</b>	<b>8941000302</b>		
	voltages for BUS- systems Adapter		24 V DC			
	Contact bridge, with sensor input and 0,2 m cable		<b>8946053622</b>			
	Contact bridge, with sensor input and 1,0m cable		<b>5763503113</b>			
	Contact bridge, with sensor input and 5,0m cable		<b>5763523113</b>			
	Contact bridge, without sensor input and 0,2 m cable		<b>5763513133</b>			
	voltages	12 V DC	24 V DC	48 V DC	110 V DC	220 V DC
	coils with increased voltage tolerances	<b>5420507012</b>	<b>5420507022</b>	<b>5420507032</b>	<b>5420507072</b>	<b>5420507082</b>
	voltages	24 V AC	48 V AC	110/115 V AC	220/230 V AC	
	coils with increased voltage tolerances	<b>5428457022</b>	<b>5428457042</b>	<b>5428457072</b>	<b>5428457082</b>	<b>5428307082</b>
	voltages	24 V DC	24 V AC	110/115 V AC	220/230 V AC	
	with ATEX coil with 3 m cable <sup>3)</sup>	<b>1827414303</b>	<b>1827414301</b>	<b>1827414299</b>	<b>1827414297</b>	
	with 10 m cable <sup>3)</sup>	<b>1827414304</b>	<b>1827414302</b>	<b>1827414300</b>	<b>1827414298</b>	
	with electrical connector <sup>4)</sup>	<b>R412000144</b>	<b>R412000145</b>	<b>R412000146</b>	<b>R412000147</b>	

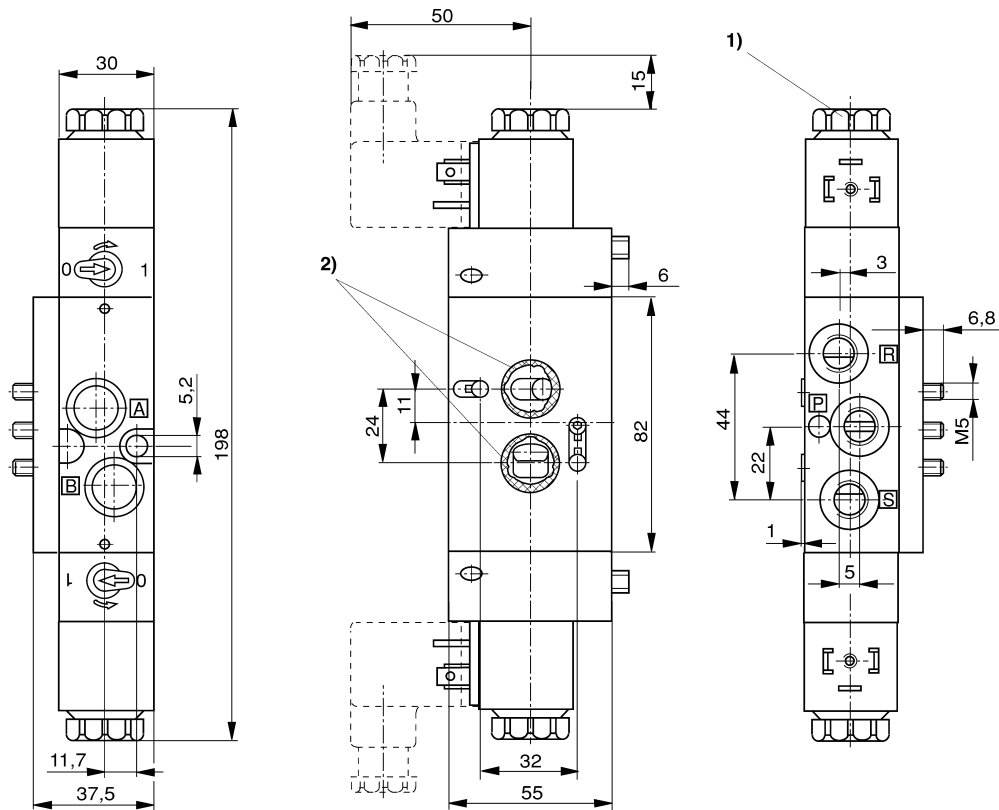
<sup>1)</sup>... see product overview <sup>2)</sup>... see separate spare parts catalogue <sup>3)</sup>ATEX-standard: II 2G EEx m IIC T5, II 3D IP65 T95°C X, ambient temperature range: -20°C to +50°C (-4 °F to +122 °F) (single mounting)

<sup>4)</sup> ATEX-standard: II 3G EEx nA IIB T4, II 3D IP65 T125°C X, ambient temperature range: -10 °C to +50 °C (14 °F to +122 °F)

# 3/2, 5/2 and 5/3 Valves, Series CD 7, G1/4 / M14x1,5

5/2-way valve, double solenoid, NAMUR standard, option: ATEX

**Rexroth**  
Bosch Group



1) After removal of cap M5 internal thread 2) Threaded pin DIN 914 M5 x 20, O-ring 16 x 2 (supplied with the valve)





# 3/2, 5/2 and 5/3 Valves, Series CD 7, G1/4 / M14x1,5

Valve unit, electrical version 23, with multiple cable

**Rexroth**  
Bosch Group



## Technical Data

Working pressure	p max.	10 bar (145 psi)
Ambient temperature range		-25 °C to +50 °C (-13 °F to +122 °F)
Medium		Compressed air, lubricated or non-lubricated
Weight		See table

Material	Al
Threaded port	R-P-S - manifold G 1/2 to ISO 228/1



## ► The part number for the complete unit will be allocated in the case of an order

- with 5 m multiple cable, contactbridges and adapter
- for 4, 6 or 8 coils

## ▲ Accessories (to be ordered separately)

Type	Part no.
Mounting set (for ten valves)*	3354600002
Plug screw G 1/2 ISO 228/1	8109030214
Seal DIN 7603 - Al	8114011854
Silencer G 1/2 ISO 228/1	5324011130
Blanking plate for empty valve position	3354601024
P-plug (1x)	3354600082
R/S-plug (2x)	3354600072
Adapter	8946053622
Contact bridge for multi-pin control, with LED and 0,2m cable	5763533103
Contact bridge for multi-pin control, LED, 5 m cable	5763533113

\*) Includes: O-ring (3 x per valve); Screw M5 x 60, disc



# 3/2, 5/2 and 5/3 Valves, Series CD 7, G1/4 / M14x1,5

Valve unit, electrical version 30/31, for bus communication

**Rexroth**  
Bosch Group



## Technical Data

Working pressure	p max.	10 bar (145 psi)
Ambient temperature range		-25 °C to +50 °C (-13 °F to +122 °F)
Medium		Compressed air, lubricated or non-lubricated
Weight		See table
Material		Al
Threaded port		R-P-S - manifold G 1/2 to ISO 228/1



## ► The part number for the complete unit will be allocated in the case of an order

- for bus communication with contactbridges and adapters
- with sensor inputs (30) or without sensor inputs (31)
- for 4, 6, 8, 10 or 12 valve places (incl. 2 sensor inputs per place at version 30)

## ▲ Accessories (to be ordered separately)

Type	Part no.
Mounting set (for ten valves)*	3354600002
Plug screw G 1/2 ISO 228/1	8109030214
Seal DIN 7603 - Al	8114011854
Silencer G 1/2 ISO 228/1	5324011130
Blanking plate for empty valve position	3354601024
P-plug (1x)	3354600082
R/S-plug (2x)	3354600072
Adapter	8946053622
Contact bridge, with input and 0,2m cable	5763503113
Contact bridge, with input and 1,0m cable	5763513113
Contact bridge, with input and 5,0m cable	5763523113
Contact bridge, without input and 0,2m cable	5763513133

\*) Includes: O-ring (3 x per valve); Screw M5 x 60, disc

# 3/2, 5/2 and 5/3 Valves, Series CD 7, G1/4 / M14x1,5

5/2-way valve, single solenoid, cold-resistant

**Rexroth**  
Bosch Group



## Technical Data

Type	Spool valve	
Working pressure range	See table	
Nominal flow rate $Q_n$ at 6 bar (87 psi), $\Delta p = 1$ bar (15 psi)	1200 l/min (1.2 Cv)	
Ambient temperature range	-40 °C to +50 °C (-40 °F to +122 °F)	
Medium	Compressed air, lubricated or non-lubricated	
Weight	0,57 kg (1.257 lbs)	
Materials	Body Seals	Zn-diecasting Polyurethane/silicone
Operating voltages	50 Hz 60 Hz	DC $\pm 10\%$ AC -20% +10% AC -10% +20%
Power consumption	24 V DC	2,14 W
Inrush power	220/230 V AC 50/60Hz	6,6 / 5,5 VA
Holding power	220/230 V AC 50/60Hz	4,18 / 3,3 VA
Insulation class	F to VDE 0580	
Protection with el. connector	IP 65 to DIN VDE 0470	
Duty cycle	ED 100%	
Switching times	$t_f$ fill	29 ms
	$t_e$ exhaust	45 ms



## Application area

The valve is non-overlapping and suitable for dual pressure.

## Part no.

	External pilot	Working pressure range [bar] (psi)	Voltage and frequency	Part no.* G1/4
	Without	3,5 to 10 (51 to 145)	24 V DC	<b>5776960220</b>
			AC 220/230 V AC 50 / 60 Hz	<b>5776965280</b>

\* without electrical connector <sup>1)</sup> usable coils see accessories

## Accessories (to be ordered separately)

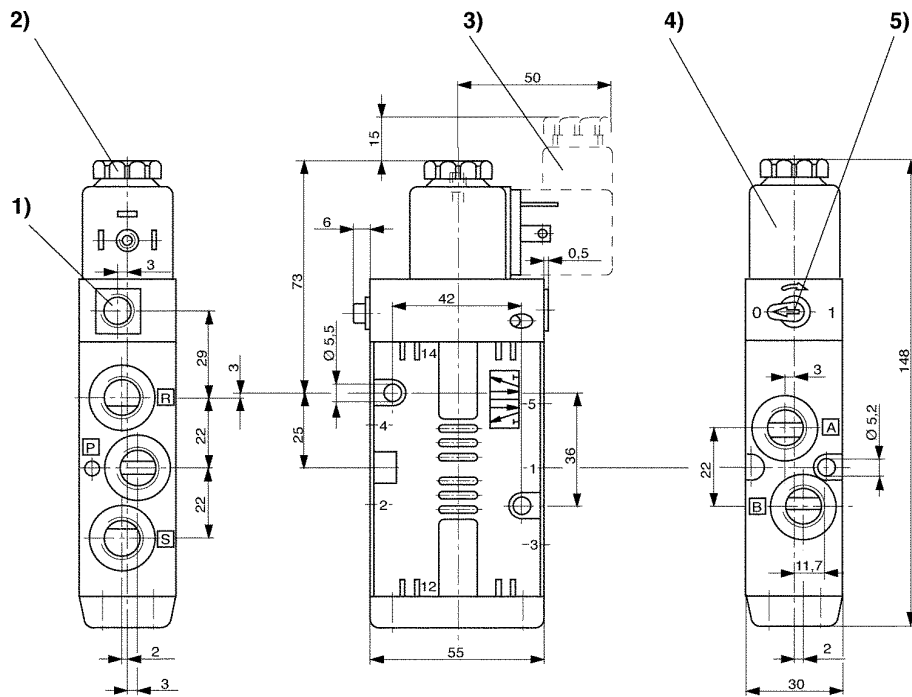
Accessory	Type	Part no.				
	spare parts kit	<b>5776020012</b>				
	kit to de-activate the manual override spare parts ... <sup>1)</sup>	<b>5420900002</b>				
	voltages	24 V DC	220/230 V AC	all voltages		
	connectors to DIN 43650, Form A and with LED	<b>8941000302</b> <b>8941016102</b>	<b>8941000302</b> <b>8941016112</b>	<b>8941000302</b>		
	other connectors ... <sup>2)</sup>					

<sup>1)</sup> ... see separate spare parts catalogue <sup>2)</sup> ... see product overview

# 3/2, 5/2 and 5/3 Valves, Series CD 7, G1/4 / M14x1,5

5/2-way valve, single solenoid, cold-resistant

**Rexroth**  
Bosch Group



- 1) After removal of cap M 5 internal thread. 2) Coil can be fixed at 45° intervals. 3) El. connector can be fixed at 90° intervals.  
4) Manual override.

# 3/2, 5/2 and 5/3 Valves, Series CD 7, G1/4

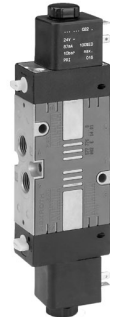
5/2, double solenoid operated, cold-resistant

**Rexroth**  
Bosch Group



## Technical Data

Type	Spool valve	
Working pressure range	See table	
Nominal flow rate $Q_n$ at 6 bar (87 psi), $\Delta p = 1$ bar (15 psi)	1200 l/min (1.2 Cv)	
Ambient temperature range	-40 °C to +50 °C (-40 °F to +122 °F)	
Medium	Compressed air, lubricated or non-lubricated	
Weight	0,75 kg (1.653 lbs)	
Materials	Body Seals	Zn-diecasting Polyurethane/silicone
Operating voltages	50 Hz 60 Hz	DC $\pm 10\%$ AC -20% +10% AC -10% +20%
Power consumption	24 V DC	2,14 W
Inrush power	220/230 V AC 50/60Hz	6,6 / 5,5 VA
Holding power	220/230 V AC 50/60Hz	4,18 / 3,3 VA
Insulation class	F to VDE 0580	
Protection with el. connector	IP 65 to DIN VDE 0470	
Duty cycle	ED	100%
Switching times	$t_f$ fill	22 ms
	$t_e$ exhaust	22 ms



## Application area

The valve is non-overlapping and suitable for dual pressure.

## Part no.

	External pilot	Working pressure range [bar] (psi)	Voltage and frequency	Part no.* G1/4
	Without	3 to 10 (44 to 145)	24 V DC	<b>5776840220</b>
			AC 220/230 V 50 / 60 Hz	<b>5776845280</b>

\* without electrical connector <sup>1)</sup> usable coils see accessories

## Accessories (to be ordered separately)

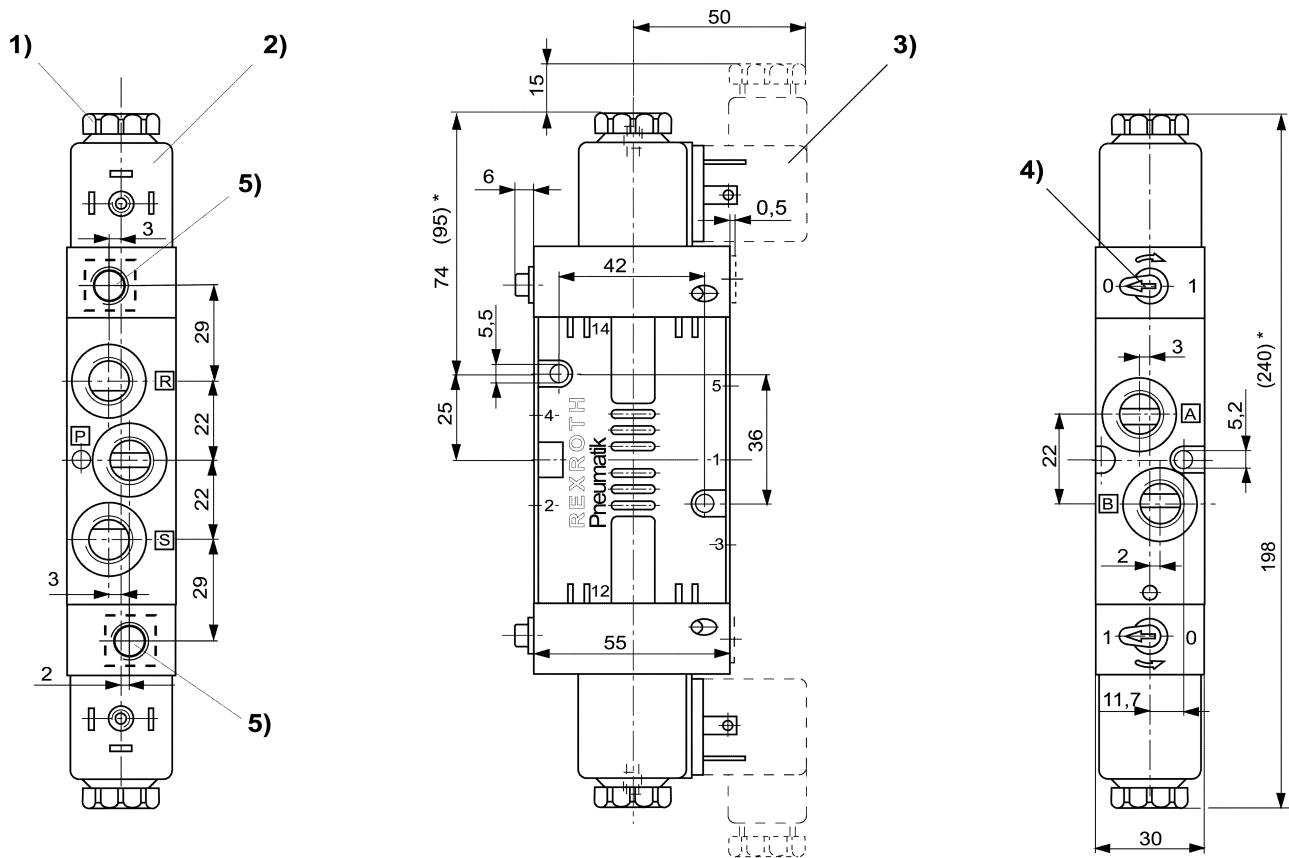
Accessory	Type	Part no.				
	spare parts kit	<b>5776020012</b>				
	kit to de-activate the manual override spare parts ... <sup>1)</sup>	<b>5420900002</b>				
	voltages	24 V DC	220/230 V AC	all voltages		
	connectors to DIN 43650, Form A and with LED	<b>8941000302</b> <b>8941016102</b>	<b>8941000302</b> <b>8941016112</b>	<b>8941000302</b>		
	other connectors ... <sup>2)</sup>					

<sup>1)</sup> ... see separate spare parts catalogue <sup>2)</sup> ... see product overview

# 3/2, 5/2 and 5/3 Valves, Series CD 7, G1/4

5/2, double solenoid operated, cold-resistant

**Rexroth**  
Bosch Group



- 1) After removal of cap M 5 internal thread. 2) Coil can be fixed at 45° intervals. 3) El. connector can be fixed at 90° intervals.  
4) Manual override.

# 3/2, 5/2 and 5/3 Valves, Series CD 7, G1/4 / M14x1,5

P - manifold for 5/2 and 5/3 valves

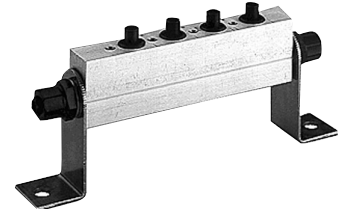
**Rexroth**  
Bosch Group

## ★ P - manifold for 5/2 and 5/3 valves


Working pressure p max. 10 bar (145 psi)  
Ambient temperature range -25 °C to +80 °C (-13 °F to +176 °F)  
Medium Compressed air, lubricated or non-lubricated

Material Al  
Threaded port P - manifold G 1/2 ISO 228/1

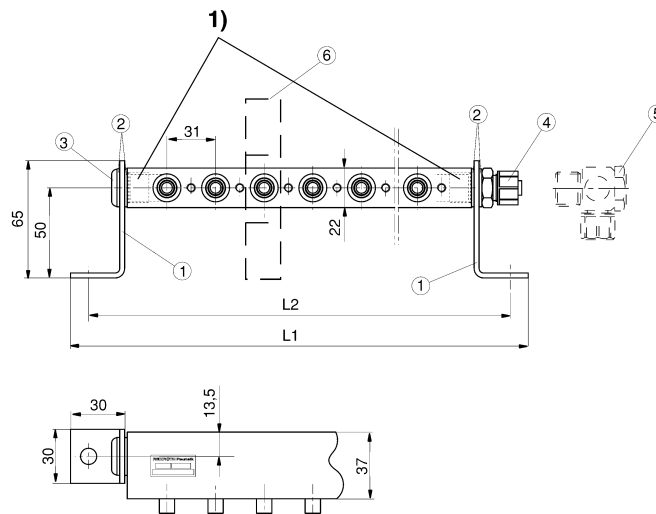
**Technical information**  
Front mounting CD 7 valves.



## ★ Part no.

	Number of valves	Part no.*	Number of valves	Part no. *
	2	3337120222	8	3337120282
	3	3337120232	9	3337120292
	4	3337120242	10	3337120302
	5	3337120252	11	3337120312
	6	3337120262	12	3337120322
	7	3337120272		
		blanking plate (Item 6)	3354601024	

\*) Includes:  
Angle (Item 1); Seal DIN 7603 Al (Item 2); Plug screw G 3/8 ISO 228/1 (Item 3); Fitting G 3/8 ISO 228/1, dia. 10 x 1 (Item 4);  
Valve mounting (Number of items depends on the number of valves): Disk, Screw, O-ring  
To be ordered separately: Fittings (Item 5)



1) Only use fittings with length of 12 mm.

No. of valves	2	3	4	5	6	7	8	9	10	11	12
L1 [mm]	152	183	214	245	276	307	338	369	400	431	462
L2 [mm]	132	163	194	225	256	287	318	349	380	411	442

# 3/2, 5/2 and 5/3 Valves, Series CD 7, G1/4 / M14x1,5

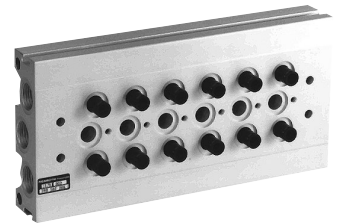
R-P-S-Manifold for 5/2 and 5/3 valves

**Rexroth**  
Bosch Group

## ★ Technical Data, Manifold for 5/2 and 5/3 valves

Working pressure	p max.	10 bar (145 psi)
Ambient temperature range		-15 °C to +85 °C (+5 °F to +185 °F)
Medium		Compressed air, lubricated or non-lubricated
Weight		See table

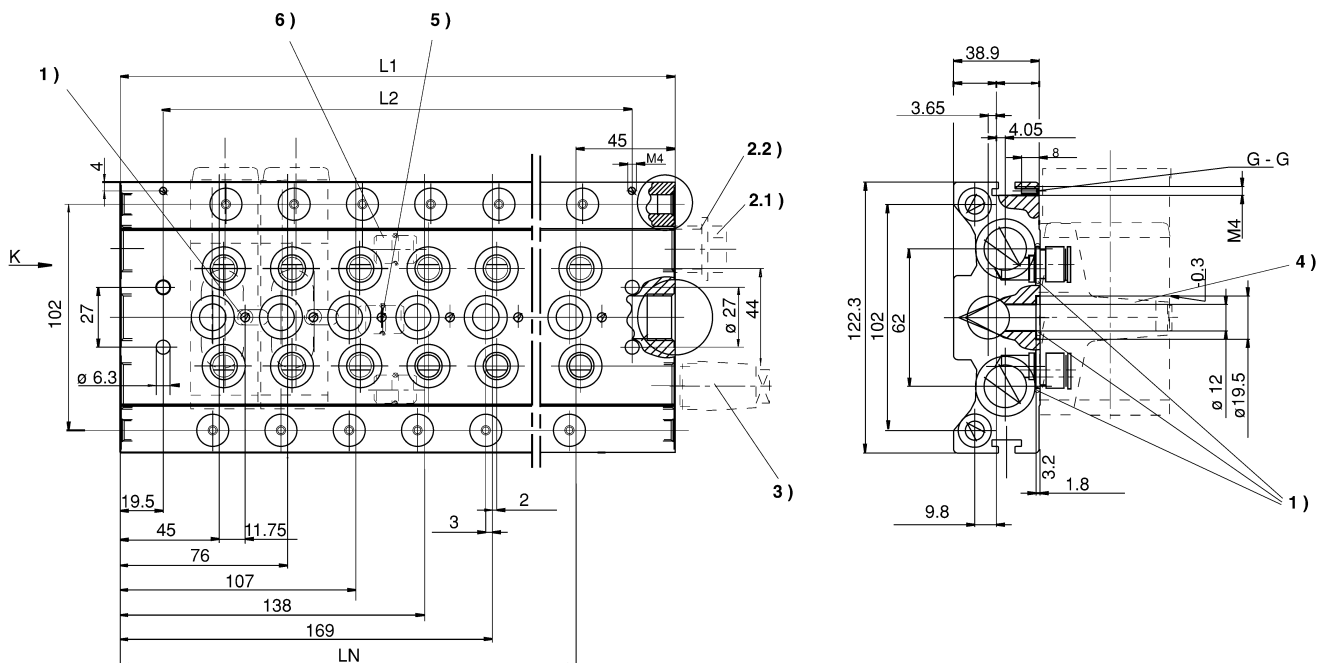
Material	Al
Threaded port	R-P-S-manifold G3/8 to ISO 228/1



## ★ Part no.

	Subplates No. of valves	Part no.	Accessories (to be ordered separately) Type		Part no.
	4	<b>8985072042</b>	Mounting set (for ten valves)*	1	<b>3354600002</b>
	6	<b>8985072062</b>	Plug screw G 1/2 ISO 228/1	2.1	<b>8109030214</b>
	8	<b>8985072082</b>	Seal DIN 7603 - Al	2.2	<b>8114011854</b>
	10	<b>8985072102</b>	Silencer G 1/2 ISO 228/1	3	<b>5324011130</b>
	12	<b>8985072122</b>	Blanking plate for empty valve position	4	<b>3354601024</b>
				P-plug (1x)	5
			R/S-plug (2x)	6	<b>3354600072</b>

\*) Includes: O-ring (3 x per valve); Screw M 5 x 60, disc



1) Mounting set. 2.1) Plug screw. 2.2) Seal. 3) Silencer. 4) Blanking plate. 5) P-plug. 6) R/S-plug.

No. of valves	4	6	8	10	12
L1 [mm]	183	245	307	369	431
L2 [mm]	144	206	268	330	392
LN [mm]	138	200	262	324	386
Weight [kg] (lbs)	1,8 (4.0)	2,5 (5.5)	3,1 (6.8)	3,7 (8.2)	4,3 (9.5)

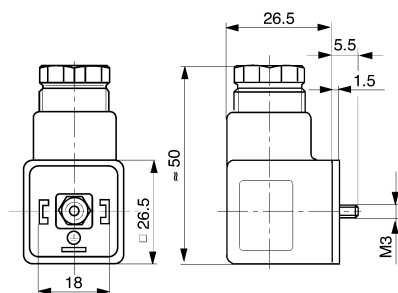
# 3/2, 5/2 and 5/3 Valves, Series CD 7, G1/4 / M14x1,5

Connectors

**Rexroth**  
Bosch Group

▲ ★ Electrical connector, Form A

DIN 43 650



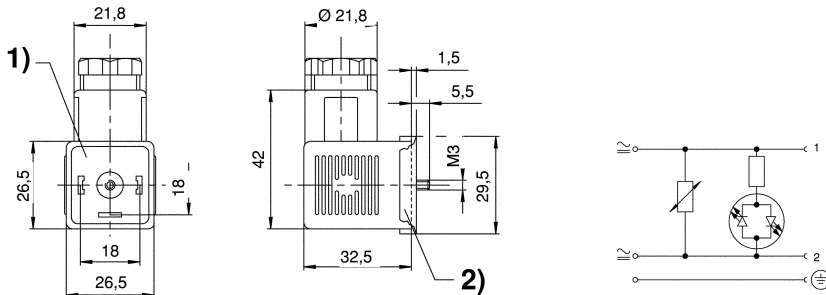
Nominal voltage	Switching current max. [A]	Wire cross-section max.	Cable gland	Weight [kg] (lbs)	Ambient temp. range	Part no.*
250 V AC / 300 V DC	16	1,5 mm <sup>2</sup>	PG 9 (for 6-8 mm dia.)	0,02 (0.044)	-40 °C to +90 °C (-40 °F to +194 °F)	<b>8941000302</b>

- Protection (mounted) IP 65 to DIN VDE 0470.
- Connection block.
- Tightening torque 50 Ncm. (4.43 in.lbs)
- Air and leakage paths to VDE 0110 insulation class C.
- Number of pins 2 + protection contact.
- Body black.
- The connector cable outlet can be turned through 4 x 90° on its base.
- \* Part no. incl. seal and screw



▲ ★ Electrical connector, Form A, with green LED and safety circuit

DIN 43 650



1) Shown without profile seal

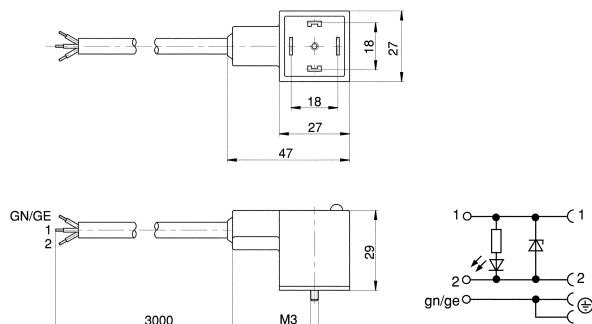
2) Profile seal

Nominal voltage	Switching current max. [A]	Cable gland	Weight [kg] (lbs)	Ambient temp. range	Part no.* 1 per pack	Part no.* 10 per pack
220 V AC/DC	16	PG 11	0,025 (0.055)	-40 °C to +90 °C (-40 °F to +194 °F)	<b>8941016112</b>	<b>8941016212</b>
24 V AC/DC	16	PG 11	0,025 (0.055)	-40 °C to +90 °C (-40 °F to +194 °F)	<b>8941016102</b>	<b>8941016202</b>

- Protection (mounted) IP 65 to DIN VDE 0470
- Connection block
- Tightening torque 50 Ncm (4.43 in.lbs)
- Air and leakage paths to VDE 0110 insulation class C
- Number of pins 2 + protection contact
- Varistor transient shield
- The connector cable outlet can be turned through 4 x 90° on its base
- LED power consumption 15 mA
- Body transparent
- Wire cross section max. 1,5 mm<sup>2</sup> (16 AWG)
- \* Part no. incl. seal and screw

▲ ★ Electrical connector, Form A, with yellow LED, cable and Z-diode

DIN 43 650



Nominal voltage	Switching current max. [A]	Wire cross-section	Weight [kg] (lbs)	Ambient temp. range	Part no.* 1 per pack	Part no.* 25 per pack
24 V AC/DC	1,3	0,75 mm <sup>2</sup> (19 AWG)	0,2 (0.441)	0 °C to +60 °C (32 °F to +140 °F)	<b>8941000522</b>	<b>8941000192</b>

- Protection (mounted) IP 65 to DIN VDE 0470
- Tightening torque 50 Ncm (4.43 in.lbs)
- LED power consumption max. 15 Ma
- Air and leakage paths to VDE 0110 insulation class C
- Number of pins 2 + protection contact
- Body black
- Material OEPVC-JZ
- \* Code no. incl. seal and screw

Bosch Rexroth AG  
Pneumatics  
Ulmer Straße 4  
DE-30880 Laatzen  
Deutschland  
+49 (0)511-21 36-0  
+49 (0)511-21 36-269  
sales-pneumatics@boschr-  
exroth.de  
www.boschrexroth.de

Bosch Rexroth Limited  
Pneumatics  
Broadway Lane, South Cerney,  
Cirencester  
Gloucestershire GL7 5UH  
Great Britain  
Phone: +44-12 85-863 000  
Fax: +44-12 85-863 003  
info@boschrexroth.co.uk  
www.boschrexroth.co.uk

Bosch Rexroth Corporation  
Pneumatics  
1953 Mercer road  
Lexington, KY 40511-1021  
USA  
Phone: +1-859-254 80 31  
Fax: +1-859-281 34 33  
info@boschrexroth-us.com  
www.boschrexroth-us.com

Bosch Rexroth Canada Corp.  
Pneumatics  
3426 Mainway Drive  
Burlington, Ontario L7M 1A8  
Canada  
Tel: +1 905-335-5511  
+1 905 335-4184  
info@boschrexroth.ca  
www.boschrexroth.ca

Bosch Rexroth Pty. Ltd.  
Pneumatics  
23 Iverseb Terrace  
Christchurch  
New Zealand  
+64 (0011) 643 365 9591  
+64 (0011) 643 358 9703

Bosch Rexroth Pty. Ltd.  
Head Office  
3 Valediction Road  
Kings Park NSW, Sydney  
Australia  
+61 (2) 9831-7788  
+61 (2) 9831-5553  
deborah.ifield@boschr-  
exroth.com.au