

The Short-Stroke Cylinder Standardized according to ISO 15524: The SSI Series, Small and Smooth



Top quality on a standard basis – ISO cylinder series SSI

Compatibility tops the list of features of the new SSI series. Of course, this includes compatibility with ISO standard 15524, but also compatibility with the other components in the Rexroth portfolio and many products on the market.

The new standard for short-stroke cylinders: SSI according to ISO 15524

In addition to their great flexibility during integration into new configurations or existing machine designs, the new SSI series short-stroke cylinders score points with their outstanding features and sophisticated equipment details. Highlights include the unparalleled low weight due to optimized material use and the reduction in components, as well as the versatile and simple mounting options. All cylinder variants and sizes are designed so they can be directly fitted or mounted with through-going screws. SSI cylinders also offer higher-than-average speeds for short-stroke cylinders, which helps reduce machine cycle times and increases productivity. Thanks to standard integrated elastic cushioning at both ends they operate extremely gently and with low vibrations.

Your individual SSI – quick and easy to configure. With complete CAD documentation, including all equipment details and sensors.

Ideal for particularly tight and short installation spaces

The SSI cylinders are right at home in extremely tight spaces. Their very compact design is suitable for the shortest installation lengths. An optimized total length is also possible when using optional strokes as no additional spacer disks are required. The ST4 and ST6 sensors can be fully inserted in the profile, which allows optimal use of the installation space, while the sensors are protected and secured against adjustments. The especially short version without a magnet can even be used in extreme installation situations, and the piston rod with hexagon spanner flat allows mounting with a wrench in the tightest of spaces.

- ▶ Up to 30% lighter than comparable cylinders
- ▶ Weight-optimized profiles, less components
- ▶ Up to 60% more effective elastic cushioning than comparable products
- ▶ Simple mounting due to an intelligent connection concept
- ▶ Flexible sensor mounting through integrated sensor slots



The SSI series – the new standard for numerous applications

The universal cylinder series for all automation applications

Innovative, reliable, and highly adaptable – these are the characteristics that distinguish our SSI series. With this high-performance profile, the new compact cylinders are optimally suited for numerous applications. The ultra-compact design saves valuable space and allows you to implement cost-efficient machine designs. With their extremely light weight, they are also ideal for mounting on moving machine parts. Thanks to this multitude of options, the cylinders are the first choice for a wide range of applications and industries.

In addition to the basic version, the standard SSI cylinder series includes versions with a through piston rod, also as a hollow piston, a non-rotating version with a front plate, or an especially short version without a magnet.



Advantages at a glance

Low noise and vibrations

Up to 60% better cushioning properties than comparable products as standard

Compatible

Complying with standard and compatible with many existing applications on the market

Versatile

Configurator, intermediate strokes, many variants and analog distance measurement available

Lightweight

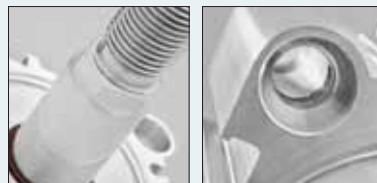
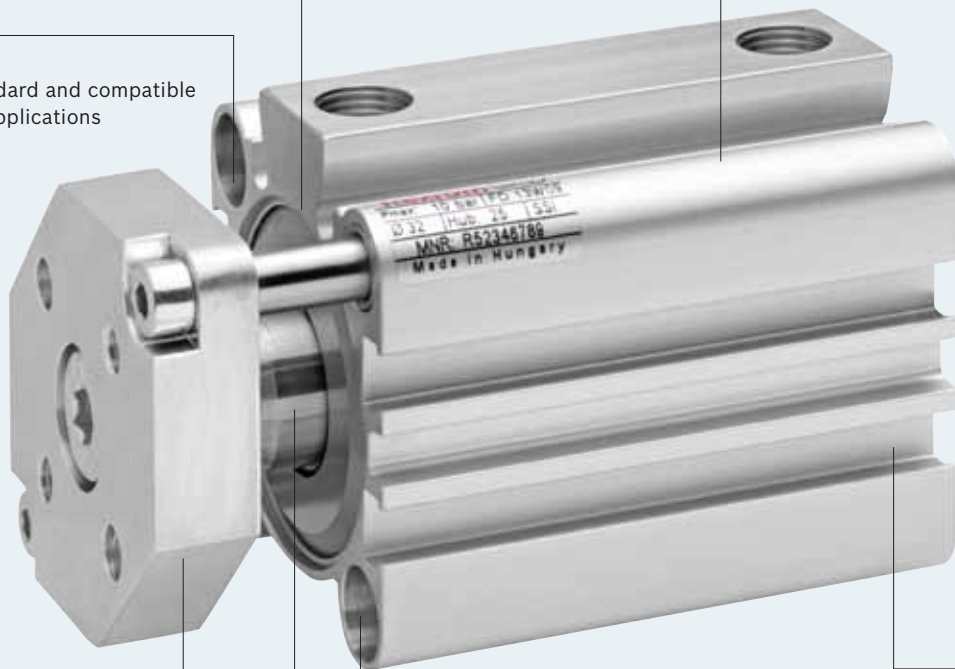
Up to 30% lighter than comparable products due to material-optimized profile

Space saving

Fully insertable, direct drop-in sensors, intermediate strokes cut to length without spacer disks

Easy to assemble

Hexagon spanner flats, universal mounting concept with 4 mounting options for all diameters



Bosch Rexroth Pneumatics GmbH

Ulmer Straße 4

D - 30880 Laatzen

Phone +49 511 2136-0

Fax +49 511 2136-269

sales-pneumatics@boschrexroth.de

www.rexrothpneumatics.com

Your Contact:

┌

┐

└

┘

Further contacts:

www.boschrexroth.com/addresses

The data specified above only serve to describe the product. No statements concerning a certain condition or suitability for a certain application can be derived from our information. The given information does not release the user from the obligation of own judgement and verification. It must be remembered that our products are subject to a natural process of wear and aging.