

The mini series offer space saving solutions for frequent disconnection of tubing or pneumatic tools.

- Compact and ergonomic
- Easy identification of circuits
- Easy disconnection / single hand operation



**KF** Straight-Through

**Working Pressure\*:**  
up to 20 bar

**Material:**

- Coupling: Technical polymer, nickel plated brass
- Plug: nickel plated brass
- Seals: NBR

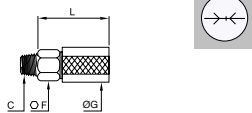
**Working Temperature:**  
-20°C up to +60°C (NBR)

**Flow Rate Air:**  
165 NI/min.  
inlet pressure 6 bar, pressure drop 0.6 bar

**→|←** Straight-Through

## 0171 Coupler without valve, Male BSPT Thread

Technical polymer, Nickel-plated brass, NBR



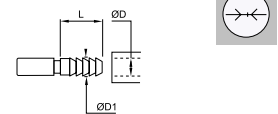
DN	C		F	G	L	Kg
3	R1/8	<b>0171 03 10 01</b>	13	17	24.5	
3	R1/8	<b>0171 03 10 02</b>	13	17	24.5	
3	R1/8	<b>0171 03 10 03</b>	13	17	24.5	
3	R1/8	<b>0171 03 10 04</b>	13	17	24.5	
3	R1/8	<b>0171 03 10 05</b>	13	17	24.5	

Straight-through

**→|←** Straight-Through

## 0180 Plug without valve, with Barb Connection for Flexible Tubing

Nickel-plated brass

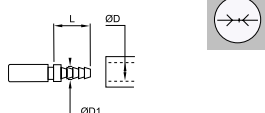


DN	ØD	ØD1		L	Kg
3	4	6	<b>0180 04 00</b>	19	
3	5	6.5	<b>0180 05 00</b>	19	

Probe without Shut-off

## 0181 Plug without valve, with Barb Connection for Polyamide (PA) Tubing

Nickel-plated brass

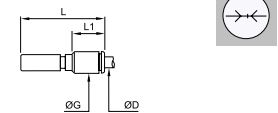


DN	ØD	ØD1		L	Kg
3	4	4.7	<b>0181 04 06</b>	19	

Probe without Shut-off

## 3150 Plug without valve, with LF 3000 Push-In Connection

Nickel-plated brass, NBR



DN	ØD		G	L	L1	Kg
3	4	<b>3150 00 61</b>	8.5	39	18	

Probe without Shut-off