

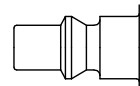


The range of ergonomic polymer couplers has been designed for the safety of operators and machinery while giving very high energy efficiency performance. Available in three profile standards, it is perfectly suited for any type of installation.

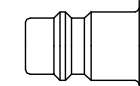
### Safety Note

Prevents risk of whiplash, the quick-acting vent allows disconnection to be carried out in total safety.

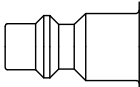
ARO 5,5



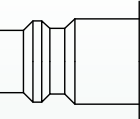
EURO 7,2



ISO B 5,5



ISO B 8,0



**Working Pressure\*:**  
up to 16 bar

### Material:

- **Coupling:** Technical polymer or aluminium, nickel plated brass, stainless steel
- **Plug:** Nickel plated steel
- **Seals:** NBR

### Working Temperature:

-20°C up to +60°C (NBR)

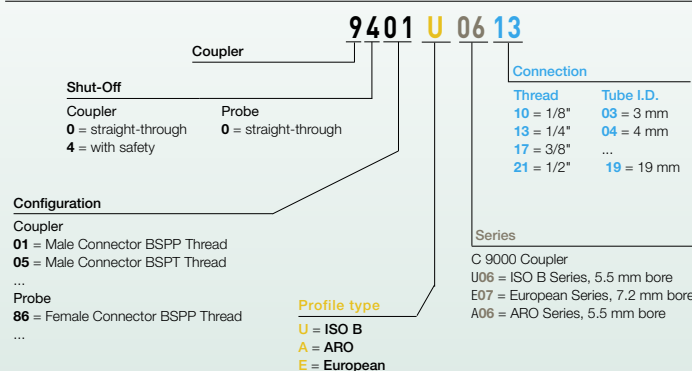
### Flow Rate Air:

- **ARO 5.5:** 1.250 l/min.
- **Euro 7.2:** 2.000 l/min.
- **ISO B 5.5:** 1.250 l/min.
- **ISO B 8,0:** 2.400 l/min.

inlet pressure 6 bar, pressure drop 0.5 bar

\* maximum static working pressure with design factor 4 to 1.

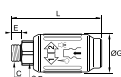
### Part Numbers Structure



## Self-Venting System

### 9401A Coupler with valve, Male BSPP Thread

Technical polymer, Nickel-plated brass, NBR



DN	C		E	F	G	L	Kg
5.5	G1/4	9401A06 13	6.5	17	31.5	70.5	
5.5	G3/8	9401A06 17	9	21	31.5	73.5	
5.5	G1/2	9401A06 21	9	25	31.5	70.5	

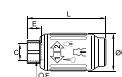
C9000 series: single shut-off = 1250 NI/min



## Self-Venting System

### 9414A Coupler with valve, Female BSPP Thread

Technical polymer, Nickel-plated brass, NBR

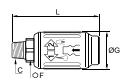


DN	C		E	F	G	L	Kg
5.5	G1/4	9414A06 13	12	17	31.5	64.5	
5.5	G3/8	9414A06 17	12	22	31.5	70	
5.5	G1/2	9414A06 21	15	27	31.5	76	

Series C9000 series: single shut-off = 1250 NI/min

### 9405A Coupler with valve, Male BSPT Thread

Technical polymer, Nickel-plated brass, NBR

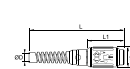


DN	C		F	G	L	Kg
5.5	R1/4	9405A06 13	17	31.5	73	
5.5	R3/8	9405A06 17	19	31.5	74.5	
5.5	R1/2	9405A06 21	22	31.5	79.5	

Series C9000 series: single shut-off = 1250 NI/min

### 9410A Coupler with valve, LF 3000® Push-In Connection, Spiral Protection Spring

Technical polymer, Nickel-plated brass, NBR



DN	ØD		G	L	L1	Kg
5.5	8	9410A06 08	31.5	143	54	
5.5	10	9410A06 10	31.5	143	54	

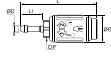
Series C9000 series: single shut-off = 1250 NI/min



## Self-Venting System

### 9421A Coupler with valve, with Hosetail

Technical polymer, Nickel-plated brass, NBR

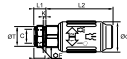


DN	ØD		F	G	L	L1	Kg
5.5	6	<a href="#">9421A06 06</a>	17	31.5	86.5	26	
5.5	8	<a href="#">9421A06 08</a>	17	31.5	86.5	26	
5.5	10	<a href="#">9421A06 10</a>	17	31.5	86.5	26	

Series C9000 series: single shut-off = 1250 NI/min

### 9416A Coupler with valve, Bulkhead Mountable, Female BSPP Thread

Technical polymer, Nickel-plated brass, NBR

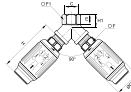


DN	C		E	F	G	K	L1	L2	ØT	Kg
5.5	G1/4	<a href="#">9416A06 13</a>	12	22	31.5	6	12.5	66.5	18.5	

Series C9000 series: single shut-off = 1250 NI/min

### 9440A Y Coupler, Female BSPP Thread

Technical polymer, Nickel-plated brass, NBR

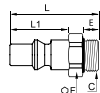


DN	C		E	F	F1	G	H	H1	Kg
5.5	G3/8	<a href="#">9440A06 17</a>	11.5	19	20	31.5	68	16	

Series C9000 series: single shut-off = 1250 NI/min

### 9087A Plug without valve, Male BSPP Thread

Nickel-plated steel, technical polymer



DN	C		E	F	L	L1	Kg
5.5	G1/4	<a href="#">9087A06 13</a>	9	17	36	22	
5.5	G3/8	<a href="#">9087A06 17</a>	9	19	36	22	
5.5	G1/2	<a href="#">9087A06 21</a>	12	24	40	22	

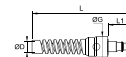
Probe without shut-off



## Self-Venting System

### 9080A Plug without valve, LF 3000® Push-In Connection, with Spiral Protection Spring

Nickel-plated steel, NBR

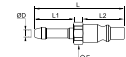


DN	ØD		G	L	L1	Kg
5.5	8	<a href="#">9080A06 08</a>	24	118	22	
5.5	10	<a href="#">9080A06 10</a>	24	118	22	

Probe without shut-off

### 9094A Plug without valve, with Hosetail

Nickel-plated steel

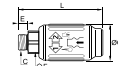


DN	ØD		F	L	L1	L2	Kg
5.5	6	<a href="#">9094A06 06</a>	14	48.5	22	25	
5.5	8	<a href="#">9094A06 08</a>	14	48.5	22	25	
5.5	10	<a href="#">9094A06 10</a>	14	48.5	22	25	

Probe without shut-off

### 9401E Coupler with valve, Male BSPP Thread

Technical polymer, Nickel-plated brass, NBR

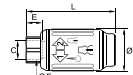


DN	C		E	F	G	L	Kg
7.2	G1/4	<a href="#">9401E07 13</a>	6.5	22	36.5	80	
7.2	G3/8	<a href="#">9401E07 17</a>	7.5	22	36.5	81	
7.2	G1/2	<a href="#">9401E07 21</a>	9	25	36.5	83.5	

Series C9000: single shut-off = 2000 NI/min

### 9414E Coupler with valve, Female BSPP Thread

Technical polymer, Nickel-plated brass, NBR



DN	C		E	F	G	L	Kg
7.2	G1/4	<a href="#">9414E07 13</a>	12	22	36.5	73	
7.2	G3/8	<a href="#">9414E07 17</a>	12	22	36.5	73	
7.2	G1/2	<a href="#">9414E07 21</a>	15	27	36.5	78	

Series C9000: single shut-off = 2000 NI/min

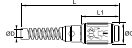
# Series C9000 - Self-Venting Turning Motion Technology



## Self-Venting System

### 9410E Coupler with valve, LF 3000® Push-In Connection, Spiral Protection Spring

Technical polymer, Nickel-plated brass, NBR

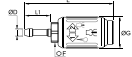


DN	ØD		G	L	L1	Kg
7.2	10	<a href="#">9410E07 10</a>	36.5	151	63	
7.2	12	<a href="#">9410E07 12</a>	36.5	151	63	

Series C9000: single shut-off = 2000 NI/min

### 9421E Coupler with valve, with Hosetail

Technical polymer, Nickel-plated brass, NBR

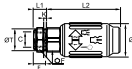


DN	ØD		F	G	L	L1	Kg
7.2	8	<a href="#">9421E07 08</a>	22	36.5	93	26	
7.2	10	<a href="#">9421E07 10</a>	22	36.5	93	26	
7.2	13	<a href="#">9421E07 13</a>	22	36.5	97	30	

Series C9000: single shut-off = 2000 NI/min

### 9416E Coupler with valve, Bulkhead Mountable, Female BSPP Thread

Technical polymer, Nickel-plated brass, NBR

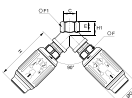


DN	C		E	F	G	K max	L1	L2	ØT min	Kg
7.2	G3/8	<a href="#">9416E07 17</a>	12	24	36.5	7	14.5	74	22.5	

Series C9000: single shut-off = 2000 NI/min

### 9440E Y Coupler, Female BSPP Thread

Technical polymer, Nickel-plated brass, NBR



DN	C		E	F	F1	G	H	H1	Kg
7.2	G1/2	<a href="#">9440E07 21</a>	14	25	25	36.5	78	19	

Series C9000: single shut-off = 2000 NI/min



## Self-Venting System

### 9087E Plug without valve, Male BSPP Thread

Nickel-plated steel, technical polymer

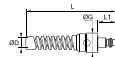


DN	C		E	F	L	L1	Kg
7.2	G1/4	<a href="#">9087E07 13</a>	9	14	34	20	
7.2	G3/8	<a href="#">9087E07 17</a>	9	17	34	20	
7.2	G1/2	<a href="#">9087E07 21</a>	12	22	38	20	

Probe without shut-off

### 9080E Plug without valve, LF 3000® Push-In Connection, with Spiral Protection Spring

Nickel-plated steel, NBR

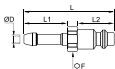


DN	ØD		G	L	L1	Kg
7.2	10	<a href="#">9080E07 10</a>	24	114	20	
7.2	12	<a href="#">9080E07 12</a>	29.5	125	20	

Probe without shut-off

### 9094E Plug without valve, with Hosetail

Nickel-plated steel

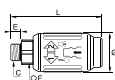


DN	ØD		F	L	L1	L2	Kg
7.2	8	<a href="#">9094E07 08</a>	17	48	20	25	
7.2	10	<a href="#">9094E07 10</a>	17	48	20	25	
7.2	13	<a href="#">9094E07 13</a>	17	48	20	25	

Probe without shut-off

### 9401U Coupler with valve, Male BSPP Thread

Technical polymer, Nickel-plated brass, NBR



DN	C		E	F	G	L	Kg
5.5	G1/4	<a href="#">9401U06 13</a>	7.5	17	31.5	74	
5.5	G3/8	<a href="#">9401U06 17</a>	8.5	21	31.5	76.5	
5.5	G1/2	<a href="#">9401U06 21</a>	10.5	25	31.5	80	
8	G1/4	<a href="#">9401U08 13</a>	6.5	22	36.5	81.5	
8	G3/8	<a href="#">9401U08 17</a>	7.5	22	36.5	82.5	
8	G1/2	<a href="#">9401U08 21</a>	9	25	36.5	85.5	

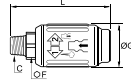
Series C9000 ISO B6: single shut-off = 1250 NI/min  
Series C9000 ISO B8: single shut-off = 2400 NI/min



## Self-Venting System

### 9405U Coupler with valve, Male BSPT Thread

Technical polymer, Nickel-plated brass, NBR

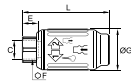


DN	C		F	G	L	Kg
5.5	R1/4	9405U06 13	17	31.5	75	
5.5	R3/8	9405U06 17	19	31.5	76.5	
5.5	R1/2	9405U06 21	22	31.5	81.5	
8	R1/4	9405U08 13	22	36.5	84	
8	R3/8	9405U08 17	22	36.5	84	
8	R1/2	9405U08 21	22	36.5	88	

Series C9000 ISO B6: single shut-off = 1250 NI/min  
Series C9000 ISO B8: single shut-off = 2400 NI/min

### 9414U Coupler with valve, Female BSPP Thread

Technical polymer, Nickel-plated brass, NBR

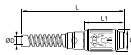


DN	C		E	F	G	L	Kg
5.5	G1/4	9414U06 13	12	17	31.5	66.5	
5.5	G3/8	9414U06 17	12	22	31.5	72	
5.5	G1/2	9414U06 21	15	27	31.5	78	
8	G1/4	9414U08 13	12	22	36.5	75	
8	G3/8	9414U08 17	12	22	36.5	75	
8	G1/2	9414U08 21	15	27	36.5	80	

Series C9000 ISO B6: single shut-off = 1250 NI/min  
Series C9000 ISO B8: single shut-off = 2400 NI/min

### 9410U Coupler with valve, LF 3000® Push-In Connection Body Spiral Protection Spring

Technical polymer, Nickel-plated brass, NBR



DN	ØD		G	L	L1	Kg
5.5	8	9410U06 08	31.5	145	56	
5.5	10	9410U06 10	31.5	145	56	
8		9410U08 10	36.5	155	63	
8	12	9410U08 12	36.5	165	63	

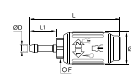
Series C9000 ISO B6: single shut-off = 1250 NI/min  
Series C9000 ISO B8: single shut-off = 2400 NI/min



## Self-Venting System

### 9421U Coupler with valve, with Hosetail

Technical polymer, Nickel-plated brass, NBR

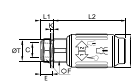


DN	ØD		F	G	L	L1	Kg
5.5	6	9421U06 06	17	31.5	88.5	26	
5.5	8	9421U06 08	17	31.5	88.5	26	
5.5	10	9421U06 10	17	31.5	88.5	26	
8	6	9421U08 06	22	36.5	95	26	
8	8	9421U08 08	22	36.5	95	26	
8	10	9421U08 10	22	36.5	95	26	
8	13	9421U08 13	22	36.5	99	30	

Series C9000 ISO B6: single shut-off = 1250 NI/min  
Series C9000 ISO B8: single shut-off = 2400 NI/min

### 9416U Coupler with valve, Bulkead Mountable, Female BSPP Thread

Technical polymer, Nickel-plated brass, NBR

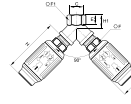


DN	C		E	F	G	K max	L1	L2	ØT min	Kg
5.5	G1/4	9416U06 13	12	22	31.5	6	12.5	68.5	18.5	
8	G3/8	9416U08 17	12	24	36.5	7	14.5	76	22.5	

Series C9000 ISO B6: single shut-off = 1250 NI/min  
Series C9000 ISO B8: single shut-off = 2400 NI/min

### 9440U Y Coupler, Female BSPP Thread

Technical polymer, Nickel-plated brass, NBR



DN	C		E	F	F1	G	H	H1	Kg
5.5	G3/8	9440U06 17	11.5	19	20	31.5	70	16	
8	G1/2	9440U08 21	14	22	25	36.5	80	19	

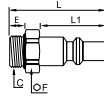
Series C9000 ISO B6: single shut-off = 1250 NI/min  
Series C9000 ISO B8: single shut-off = 2400 NI/min



## Self-Venting System

### 9087U Plug without valve, Male BSPP Thread

Nickel-plated steel, technical polymer

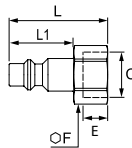


DN	C		E	F	L	L1	Kg
5.5	G1/4	<a href="#">9087U06 13</a>	7	16	37	24	
5.5	G3/8	<a href="#">9087U06 17</a>	7	20	37	24	
5.5	G1/2	<a href="#">9087U06 21</a>	9	24	39	24	
8	G1/4	<a href="#">9087U08 13</a>	7	16	38	26	
8	G3/8	<a href="#">9087U08 17</a>	7	20	39	26	
8	G1/2	<a href="#">9087U08 21</a>	9	24	42	26	

Probe without shut-off

### 9086U Plug without valve, Female BSPP Thread

Treated steel

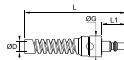


DN	C		E	F	L	L1	Kg
5.5	G3/8	<a href="#">9086 23 17</a>	9	19	36	24	

Probe without shut-off30 Series probe (DN 8.5) compatible with ISO B series C 9000 couplers (DN 8)

### 9080U Plug without valve, LF 3000® Push-In Connection, with Spiral Protection Spring

Nickel-plated steel, NBR

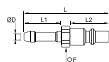


DN	ØD		G	L	L1
5.5	8	<a href="#">9080U06 08</a>	24	112	24
5.5	10	<a href="#">9080U06 10</a>	24	112	24
8	10	<a href="#">9080U08 10</a>	24	114	26
8	12	<a href="#">9080U08 12</a>	29.5	125	26

Probe without shut-off

### 9094U Plug without valve, with Hosetail

Nickel-plated steel



DN	ØD		F	L	L1	L2
5.5	6	<a href="#">9094U06 06</a>	14	51	24	25
5.5	8	<a href="#">9094U06 08</a>	14	51	27	25
5.5	10	<a href="#">9094U06 10</a>	14	51	24	25
8	8	<a href="#">9094U08 08</a>	17	51	24	25
8	10	<a href="#">9094U08 10</a>	17	51	27	25
8	13	<a href="#">9094U08 13</a>	17	51	24	25

Probe without shut-off