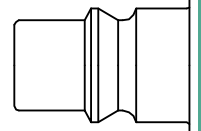




Brass coupling system produced for harsh applications. The system is suitable for use with non aggressive liquid media. The couplings are corrosion resistant. Coupling system with single-hand operation. The ergonomic sleeve design prevents entering dirt on the valve body.

- Available on request:
 - in brass material without nickel plating
 - with additional end connections
 - other seals for different temperature ranges and fluids



ARO Profile

KA Single Shut-Off

Working Pressure*:
up to 35 bar

Material:

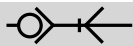
- Coupling: Nickel plated brass
- Plug: Nickel plated steel
- Seals: NBR

Working Temperature:
-20°C up to +100°C (NBR)

Flow Rate Air:
1.400 l/min.
inlet pressure 6 bar, pressure drop 0.5 bar

Flow Rate Water:
18 l/min.
pressure drop 0.5 bar

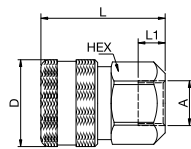
* maximum static working pressure with design factor 4 to 1.



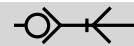
Single Shut-Off

40KAIW Coupler with valve, Female Thread

Nickel-plated brass, NBR



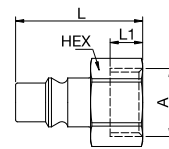
| A | HEX | L | L1 | D |
|-------------------------|-----|----|----|----|
| G3/8 40KAIW17MPN | 27 | 46 | 10 | 32 |
| G1/2 40KAIW21MPN | 27 | 46 | 11 | 32 |



Single Shut-Off

40SFIW Plug without valve, Female Thread

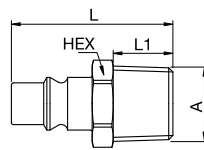
Nickel-plated steel



| A | HEX | L | L1 |
|-------------------------|-----|----|----|
| G3/8 40SFIW17SXN | 19 | 35 | 9 |
| G1/2 40SFIW21SXN | 24 | 39 | 12 |

40SFAK Plug without valve, Male Thread

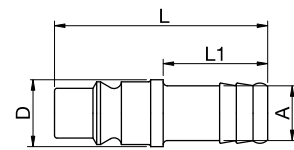
Nickel-plated steel



| A | HEX | L | L1 |
|-------------------------|-----|----|----|
| R3/8 40SFAK17SXN | 16 | 40 | 12 |
| R1/2 40SFAK21SXN | 16 | 46 | 17 |

40SFTF Plug without valve, Hose Barb

Nickel-plated steel



| A | L | L1 | D |
|-----------------------|----|----|----|
| 8 40SFTF08SXN | 51 | 25 | 16 |
| 10 40SFTF10SXN | 51 | 25 | 16 |
| 13 40SFTF13SXN | 51 | 25 | 16 |