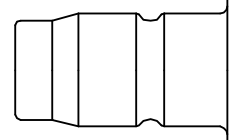




Industrial coupling with Atlas Copco-Profile. Coupling system with single-hand operation. High Flow valve for optimum flow and low pressure drop. Optimal for use with large pneumatic consumers due to the robust design and steel sleeve. The collar design minimises damage to the valve body.

- Available on request:
  - with additional end connections
  - other seals for different temperature ranges and fluids



Scandinavian Profile

**Dust Protections** (P. 357)  
for Coupling Part.-No. SK27S

## KA Single Shut-Off

**Working Pressure\*:**  
up to 35 bar

**Material:**

- Coupling: Nickel plated brass / steel
- Plug: Nickel plated steel
- Seals: NBR

**Working Temperature:**

-20°C up to +100°C (NBR)

**Flow Rate Air:**

2.550 l/min.

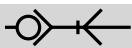
inlet pressure 6 bar, pressure drop 0.5 bar

**Flow Rate Water:**

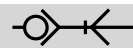
30 l/min.

pressure drop 0.5 bar

\* maximum static working pressure with design factor 4 to 1.



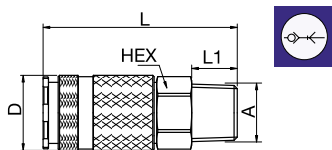
Single Shut-Off



Single Shut-Off

### 34KAAK Coupler with valve, Male Thread

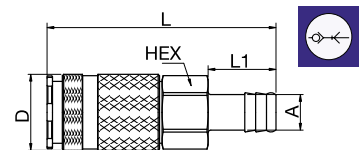
Nickel-plated brass/steel, NBR



A		HEX	L	L1	D
R3/8	34KAAK17SPN	24	70	12	28
R1/2	34KAAK21SPN	24	72	12	28
R3/4	34KAAK26SPN	27	72	12	28

### 34KATF Coupler with valve, Hose Barb

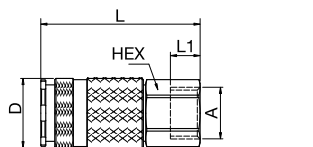
Nickel-plated brass/steel, NBR



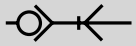
A		HEX	L	L1	D
10	34KATF10SPN	24	84	25	28
13	34KATF13SPN	24	84	25	28
16	34KATF16SPN	24	84	25	28
19	34KATF19SPN	24	84	25	28

### 34KAIW Coupler with valve, Female Thread

Nickel-plated brass/steel, NBR



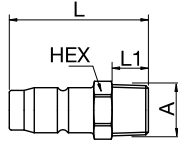
A		HEX	L	L1	D
G3/8	34KAIW17SPN	24	64	12	28
G1/2	34KAIW21SPN	24	64	12	28
G3/4	34KAIW26SPN	32	68.5	14	28



Single Shut-Off

## 34SFAK Plug without valve, Male Thread

Nickel-plated steel



A

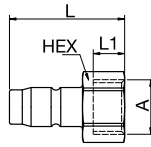


HEX L L1

R1/4	<b>34SFAK13SXN</b>	17	46	12
R3/8	<b>34SFAK17SXN</b>	19	46	12
R1/2	<b>34SFAK21SXN</b>	22	52	17

## 34SFIW Plug without valve, Female Thread

Nickel-plated steel



A

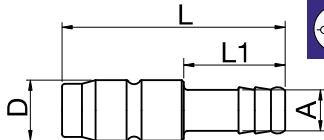


HEX L L1

G3/8	<b>34SFIW17SXN</b>	19	40	9
G1/2	<b>34SFIW21SXN</b>	24	44	12

## 34SFTF Plug without valve, Hose Barb

Nickel-plated steel



A



L L1 D

10	<b>34SFTF10SXN</b>	55	25	15
13	<b>34SFTF13SXN</b>	55	25	15