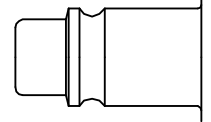




Steel industrial coupling with Atlas Copco-Profile. Specially suited to use with gaseous media in industry. Coupling system with single-hand operation. High Flow valve for optimum flow and low pressure drop.

- Available on request:
 - with additional end connections
 - other seals for different temperature ranges and fluids



Scandinavian Profile

Dust Protections (P. 357)
for Coupling Part.-No. SK23S
for Plug Part.-No. SK12S

KA Single Shut-Off

Working Pressure*:
up to 35 bar

Material:

- Coupling: Nickel plated brass / steel
- Plug: Nickel plated steel
- Seals: NBR

Working Temperature:

-20°C up to +100°C (NBR)

Flow Rate Air:

1.700 l/min.

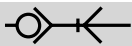
inlet pressure 6 bar, pressure drop 0.5 bar

Flow Rate Water:

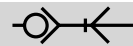
23 l/min.

pressure drop 0.5 bar

* maximum static working pressure with design factor 4 to 1.



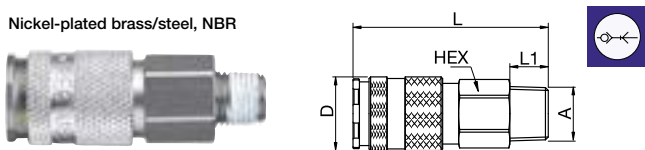
Single Shut-Off



Single Shut-Off

33KAAK Coupler with valve, Male Thread

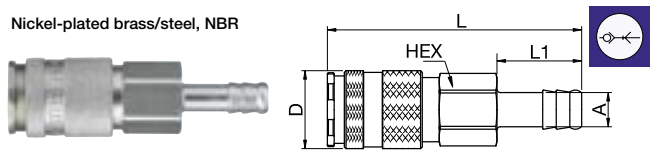
Nickel-plated brass/steel, NBR



A		HEX	L	L1	D
R1/4	33KAAK13SPN	19	60	12	23
R3/8	33KAAK17SPN	19	59	12	23
R1/2	33KAAK21SPN	22	60	17	23

33KATF Coupler with valve, Hose Barb

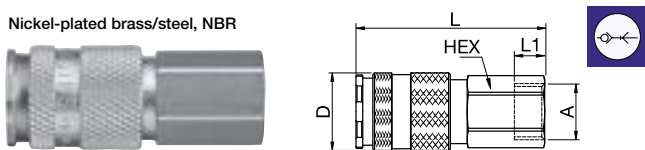
Nickel-plated brass/steel, NBR



A		HEX	L	L1	D
6	33KATF06SPN	19	73	25	23
8	33KATF08SPN	19	73	25	23
10	33KATF10SPN	19	73	25	23
13	33KATF13SPN	19	73	25	23

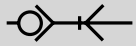
33KAIW Coupler with valve, Female Thread

Nickel-plated brass/steel, NBR



A		HEX	L	L1	D
G1/4	33KAIW13SPN	19	55	10	23
G3/8	33KAIW17SPN	19	54	9	23
G1/2	33KAIW21SPN	24	57	12	23

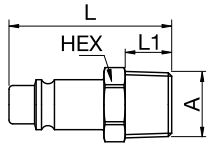
Series 33 - Brass/Steel



Single Shut-Off

33SFAK Plug without valve, Male Thread

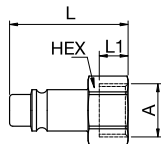
Nickel-plated steel



A		HEX	L	L1
R1/4	33SFAK13SXN	14	42	12
R3/8	33SFAK17SXN	17	42	12
R1/2	33SFAK21SXN	22	47	17

33SFIW Plug without valve, Female Thread

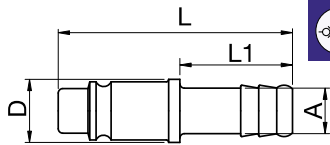
Nickel-plated steel



A		HEX	L	L1
G1/4	33SFIW13SXN	17	37	9
G3/8	33SFIW17SXN	17	37	9
G1/2	33SFIW21SXN	24	42	12

33SFTF Plug without valve, Hose Barb

Nickel-plated steel



A		L	L1	D
6	33SFTF06SXN	52	25	14
8	33SFTF08SXN	52	25	14
10	33SFTF10SXN	52	25	15
13	33SFTF13SXN	52	25	15