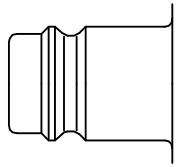




1/2" Universal industrial coupling with standard European profile for use with large pneumatic consumers. Coupling system with single-hand operation. High Flow valve for optimum flow and low pressure drop. The series stands out for its robust design (steel sleeve), extremely high flow and long service life even with the harshest use. The collar design minimises damage to the valve body.



Euro Profile

- Available on request:
 - in brass material with nickel plating
 - with additional end connections
 - other seals for different temperature ranges and fluids

Dust Protections (P. 357)
for Coupling Part.-No. SK27S

KA Single Shut-Off

Working Pressure*:
up to 35 bar

Material:

- Coupling: Nickel plated brass / steel
- Plug: Nickel plated steel
- Seals: NBR

Working Temperature:
-20°C up to +100°C (NBR)

Flow Rate Air:
2.400 l/min.
inlet pressure 6 bar, pressure drop 0.5 bar

Flow Rate Water:
31 l/min.
pressure drop 0.5 bar

KB Double Shut-Off

Working Pressure*:
up to 35 bar

Material:

- Coupling: Brass
- Plug: Nickel plated brass
- Seals: NBR

Working Temperature:
-20°C up to +100°C (NBR)

Flow Rate Air:
950 l/min.
inlet pressure 6 bar, pressure drop 0.5 bar

Flow Rate Water:
14 l/min.
pressure drop 0.5 bar

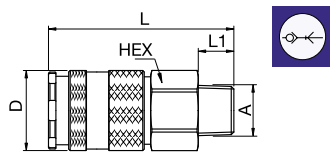
* maximum static working pressure with design factor 4 to 1.

Single Shut-Off

Single Shut-Off

27KAAK Coupler with valve, Male Thread

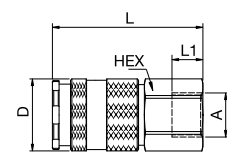
Nickel-plated brass / Steel, NBR



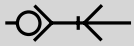
A		HEX	L	L1	D
R1/4	27KAAK13MPN	24	63	12	27
R3/8	27KAAK17MPN	24	63	12	27
R1/2	27KAAK21MPN	24	65	17	27
R3/4	27KAAK26MPN	27	65	17	27

27KAIW Coupler with valve, Female Thread

Nickel-plated brass / Steel, NBR



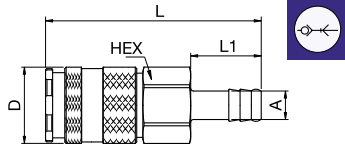
A		HEX	L	L1	D
G1/4	27KAIW13MPN	24	56	10	27
G3/8	27KAIW17MPN	24	56	11	27
G1/2	27KAIW21MPN	24	56	12	27
G3/4	27KAIW26MPN	27	60	16	27



Single Shut-Off

27KATF Coupler with valve, Hose Barb

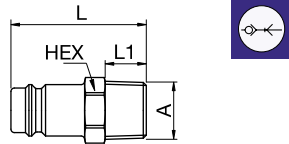
Nickel-plated brass / Steel, NBR



A		HEX	L	L1	D
8	27KATF08MPN	24	76	25	27
9	27KATF09MPN	24	76	25	27
10	27KATF10MPN	24	76	25	27
13	27KATF13MPN	24	76	25	27
16	27KATF16MPN	24	76	20	27
19	27KATF19MPN	24	76	25	27

27SFAK Plug without valve, Male Thread

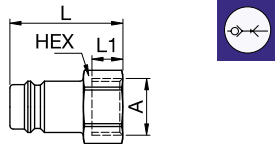
Nickel-plated steel



A		HEX	L	L1
R1/4	27SFAK13SXN	17	40	12
R3/8	27SFAK17SXN	17	40	12
R1/2	27SFAK21SXN	22	45	17
R3/4	27SFAK26SXN	27	48	19

27SFIW Plug without valve, Female Thread

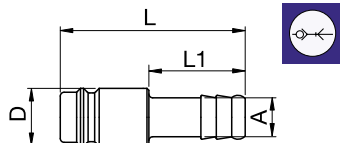
Nickel-plated steel



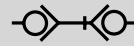
A		HEX	L	L1
G1/4	27SFIW13SXN	17	33	9
G3/8	27SFIW17SXN	9086 27 17	19	33
G1/2	27SFIW21SXN	9086 27 21	24	37
G3/4	27SFIW26SXN	9086 27 27	32	42

27SFTF Plug without valve, Hose Barb

Nickel-plated steel



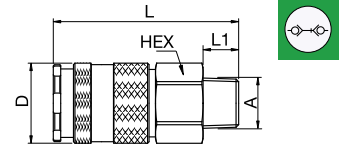
A		L	L1	D
6	27SFTF06SXN	48	25	15
8	27SFTF08SXN	9085 27 08	48	25
9	27SFTF09SXN	48	25	15
10	27SFTF10SXN	9085 27 10	48	25
13	27SFTF13SXN	9085 27 13	48	25
16	27SFTF16SXN	49	25	18
19	27SFTF19SXN	9085 27 19	49	25



Double Shut-off

27KBAK Coupler with valve, Male Thread

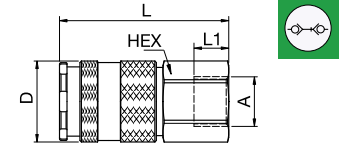
Nickel-plated brass, NBR



A		HEX	L	L1	D
R1/4	27KBAK13BPN	24	63	12	27
R3/8	27KBAK17BPN	24	63	12	27
R1/2	27KBAK21BPN	24	65	17	27
R3/4	27KBAK26BPN	27	65	17	27

27KBIW Coupler with valve, Female Thread

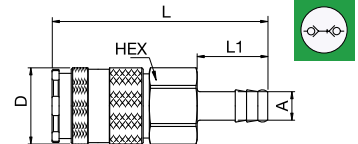
Nickel-plated brass, NBR



A		HEX	L	L1	D
G1/4	27KBIW13BPN	24	56	10	27
G3/8	27KBIW17BPN	24	56	11	27
G1/2	27KBIW21BPN	24	56	12	27
G3/4	27KBIW26BPN	32	60	16	27

27KBTf Coupler with valve, Hose Barb

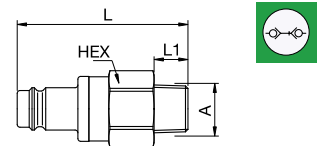
Nickel-plated brass, NBR



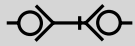
A		HEX	L	L1	D
8	27KBTf08BPN	24	76	25	27
9	27KBTf09BPN	24	76	25	27
10	27KBTf10BPN	24	76	25	27
13	27KBTf13BPN	24	76	25	27
16	27KBTf16BPN	24	76	25	27
19	27KBTf19BPN	24	76	25	27

27SBAK Plug with valve, Male Thread

Nickel-plated brass, NBR



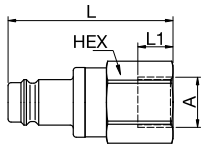
A		HEX	L	L1
R1/4	27SBAK13MPN	24	60.5	12
R3/8	27SBAK17MPN	24	60.5	12
R1/2	27SBAK21MPN	24	62.5	17
R3/4	27SBAK26MPN	27	62.5	17



Double Shut-off

27SBIW Plug with valve, Female Thread

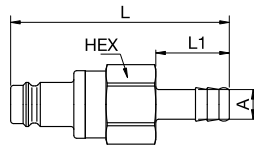
Nickel-plated brass, NBR



A			HEX	L	L1
G1/4	27SBIW13MPN		24	55	9
G3/8	27SBIW17MPN	9286 27 17	24	55	9
G1/2	27SBIW21MPN	9286 27 21	24	55	12
G3/4	27SBIW26MPN	9286 27 27	32	58	16

27SBTF Plug with valve, Hose Barb

Nickel-plated brass, NBR



A			HEX	L	L1
8	27SBTF08MPN	9285 27 08	24	75	25
9	27SBTF09MPN		24	75	25
10	27SBTF10MPN	9285 27 10	24	75	25
13	27SBTF13MPN	9285 27 13	24	75	25
16	27SBTF16MPN		24	75	25
19	27SBTF19MPN	9285 27 19	24	75	25