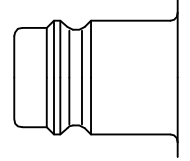




Premium industrial coupling 1/2" with standard European profile. Suitable for compressed air applications with greater than average air consumption. Above average flow values compared with standard market products. Coupling system with single-hand operation. Ultra High Flow valve for optimum flow and low pressure drop. Extremely robust and ergonomically shaped, 2-component plastic sleeve.

- Available on request:
 - with additional end connections
 - other seals for different temperature ranges and fluids



Euro Profile

Dust Protections (P. 357)
for Coupling Part.-No. SK27S
for Plug Part.-No. SK16S

KA
Single Shut-Off

Working Pressure*:
up to 35 bar

Material:

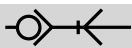
- Coupling: Nickel plated brass, QPQ treated steel, PA6+TPE
- Plug: Nickel plated steel
- Seals: NBR

Working Temperature:
-20°C up to +40°C (NBR)

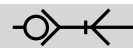
Flow Rate Air:
3.500 l/min.
inlet pressure 6 bar, pressure drop 0.5 bar

Flow Rate Water:
51 l/min.
pressure drop 0.5 bar

* maximum static working pressure with design factor 4 to 1.



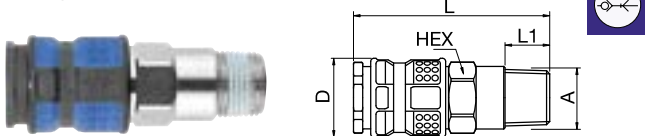
Single Shut-Off



Single Shut-Off

1727KAAK Coupler with valve, Male Thread

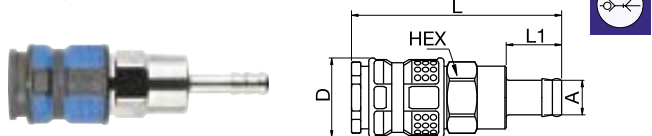
Nickel-plated brass, Steel QPQ treated, PA6+TPE, NBR



A		HEX	L	L1	D
R3/8	1727KAAK17SPN	24	70	12	30
R1/2	1727KAAK21SPN	24	75	17	30
R3/4	1727KAAK26SPN	27	64	17	30

1727KATF Coupler with valve, Hose Barb

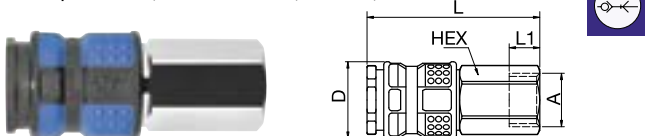
Nickel-plated brass, Steel QPQ treated, PA6+TPE, NBR



A		HEX	L	L1	D
10	1727KATF10SPN	24	80	21	30
13	1727KATF13SPN	24	80	21	30
16	1727KATF16SPN	24	80	21	30
19	1727KATF19SPN	24	80	21	30

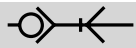
1727KAIW Coupler with valve, Female Thread

Nickel-plated brass, Steel QPQ treated, PA6+TPE, NBR



A		HEX	L	L1	D
G3/8	1727KAIW17SPN	24	64.5	10	30
G1/2	1727KAIW21SPN	24	68	12	30
G3/4	1727KAIW26SPN	32	69	14	30

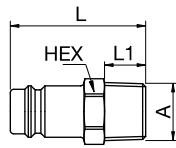
Series 1727 - Brass/Steel



Single Shut-Off

27SFAK Plug without valve, Male Thread

Nickel-plated steel

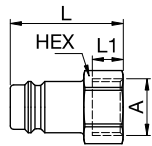


HEX L L1

R1/4	27SFAK13SXN		17	40	12
R3/8	27SFAK17SXN		17	40	12
R1/2	27SFAK21SXN		22	45	17
R3/4	27SFAK26SXN		27	48	19

27SFIW Plug without valve, Female Thread

Nickel-plated steel

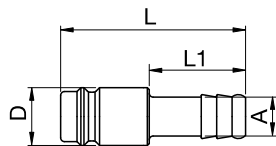


HEX L L1

G1/4	27SFIW13SXN		17	33	9
G3/8	27SFIW17SXN	9086 27 17	19	33	9
G1/2	27SFIW21SXN	9086 27 21	24	37	12
G3/4	27SFIW26SXN	9086 27 27	32	42	16

27SFTF Plug without valve, Hose Barb

Nickel-plated steel



L L1 D

6	27SFTF06SXN		48	25	15
8	27SFTF08SXN	9085 27 08	48	25	15
9	27SFTF09SXN		48	25	15
10	27SFTF10SXN	9085 27 10	48	25	15
13	27SFTF13SXN	9085 27 13	48	25	15
16	27SFTF16SXN		49	25	18
19	27SFTF19SXN	9085 27 19	49	25	21