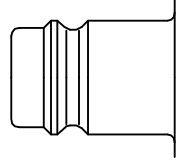




energy
saver

Premium industrial coupling 1/2" with standard European profile. Suitable for compressed air applications with greater than average air consumption. Above average flow values compared with standard market products. Coupling system with single-hand operation. Ultra High Flow valve for optimum flow and low pressure drop.

- Available on request:
 - with additional end connections
 - other seals for different temperature ranges and fluids



Euro Profile

Dust Protections (P. 357)
for Coupling Part.-No. SK27S

KA Single Shut-Off

Working Pressure*:
up to 35 bar

Material:

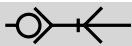
- Coupling: Nickel plated brass, QPQ treated steel
- Plug: Nickel plated steel
- Seals: NBR

Working Temperature:
-20°C up to +100°C (NBR)

Flow Rate Air:
3.500 l/min.
inlet pressure 6 bar, pressure drop 0.5 bar

Flow Rate Water:
51 l/min.
pressure drop 0.5 bar

* maximum static working pressure with design factor 4 to 1.



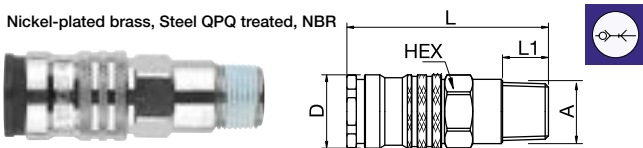
Single Shut-Off



Single Shut-Off

1700KAAK Coupler with valve, Male Thread

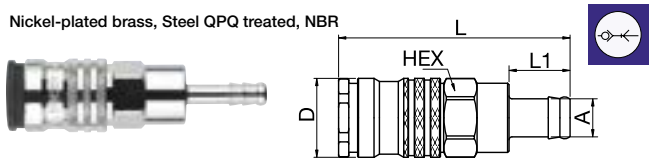
Nickel-plated brass, Steel QPQ treated, NBR



A	HEX	L	L1	D
R3/8 1700KAAK17SPN	24	70	12	27
R1/2 1700KAAK21SPN	24	75	17	27
R3/4 1700KAAK26SPN	27	64	17	27

1700KATF Coupler with valve, Hose Barb

Nickel-plated brass, Steel QPQ treated, NBR



A	HEX	L	L1	D
10 1700KATF10SPN	24	80	21	27
13 1700KATF13SPN	24	80	21	27
16 1700KATF16SPN	24	80	21	27
19 1700KATF19SPN	24	80	21	27

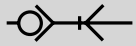
1700KAIW Coupler with valve, Female Thread

Nickel-plated brass, Steel QPQ treated, NBR



A	HEX	L	L1	D
G3/8 1700KAIW17SPN	24	64.5	10	27
G1/2 1700KAIW21SPN	24	68	11	27
G3/4 1700KAIW26SPN	32	69	14	27

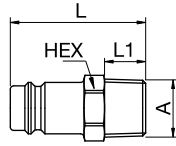
Series 1700 - Brass/Steel



Single Shut-Off

27SFAK Plug without valve, Male Thread

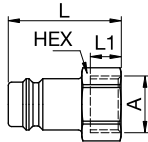
Nickel-plated steel



A	HEX	L	L1
R1/4 27SFAK13SXN	17	40	12
R3/8 27SFAK17SXN	17	40	12
R1/2 27SFAK21SXN	22	45	17
R3/4 27SFAK26SXN	27	48	19

27SFIW Plug without valve, Female Thread

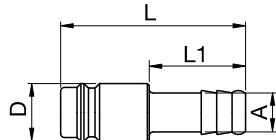
Nickel-plated steel



A	HEX	L	L1
G1/4 27SFIW13SXN	17	33	9
G3/8 27SFIW17SXN	9086 27 17	19	33
G1/2 27SFIW21SXN	9086 27 21	24	37
G3/4 27SFIW26SXN	9086 27 27	32	42

27SFTF Plug without valve, Hose Barb

Nickel-plated steel



A	L	L1	D
6 27SFTF06SXN	48	25	15
8 27SFTF08SXN	9085 27 08	48	25
9 27SFTF09SXN	48	25	15
10 27SFTF10SXN	9085 27 10	48	25
13 27SFTF13SXN	9085 27 13	48	25
16 27SFTF16SXN	49	25	18
19 27SFTF19SXN	9085 27 19	49	25