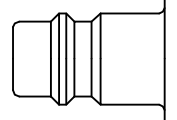




energy saver

Premium industrial coupling 3/8" with European standard profile. Suitable for compressed air applications with greater than average air consumption. Coupling system with single-hand operation. Ultra High Flow valve for optimum flow and low pressure drop. Extremely robust and ergonomically shaped, 2-component plastic sleeve.

- Available on request:
 - with additional end connections
 - other seals for different temperature ranges and fluids



Euro Profile

Dust Protections (P. 357)
for Coupling Part.-No. SK23S
for Plug Part.-No. SK12S

KA Single Shut-Off

Working Pressure*:
up to 35 bar

Material:

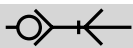
- **Coupling:** Nickel plated brass, QPQ treated steel, PA6+TPE
- **Plug:** Zinc plated steel
- **Seals:** NBR

Working Temperature:
-20°C up to +100°C (NBR)

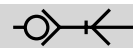
Flow Rate Air:
2.020 l/min.
inlet pressure 6 bar, pressure drop 0.5 bar

Flow Rate Water:
31 l/min.
pressure drop 0.5 bar

* maximum static working pressure with design factor 4 to 1.



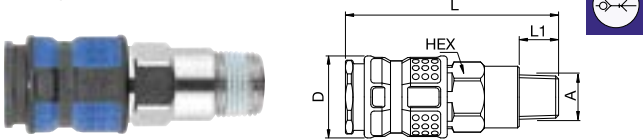
Single Shut-Off



Single Shut-Off

1625KAAK Coupler with valve, Male Thread

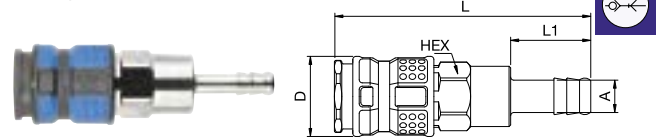
Nickel-plated brass, Steel QPQ treated, PA6+TPE, NBR



A	HEX	L	L1	D
R1/4 1625KAAK13SPN	19	65	12	26
R3/8 1625KAAK17SPN	19	65	12	26
R1/2 1625KAAK21SPN	22	59.5	17	26

1625KATF Coupler with valve, Hose Barb

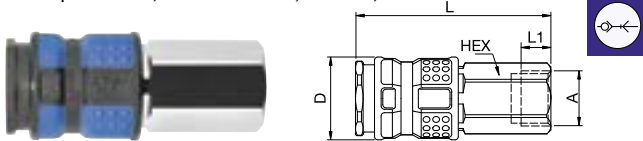
Nickel-plated brass, Steel QPQ treated, PA6+TPE, NBR



A	HEX	L	L1	D
6 1625KATF06SPN	19	80	25	26
8 1625KATF08SPN	19	80	25	26
9 1625KATF09SPN	19	80	25	26
10 1625KATF10SPN	19	80	25	26
13 1625KATF13SPN	19	80	25	26

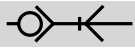
1625KAIW Coupler with valve, Female Thread

Nickel-plated brass, Steel QPQ treated, PA6+TPE, NBR



A	HEX	L	L1	D
G1/4 1625KAIW13SPN	19	59	9	26
G3/8 1625KAIW17SPN	19	59	9	26
G1/2 1625KAIW21SPN	24	62	12	26

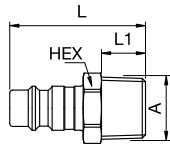
Series 1625 - Brass/Steel



Single Shut-Off

25SFA Plug without valve, Male Thread

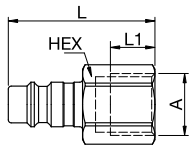
Zinc-plated steel



A			HEX	L	L1
R1/8	25SFAK10SXZ		13	33	9
G1/8	25SAFW10SXZ	9087 25 10	13	30.5	6.5
R1/4	25SFAK13SXZ		14	36.5	12
G1/4	25SAFW13SXZ	9087 25 13	17	32.5	8
R3/8	25SFAK17SXZ		17	37	12
G3/8	25SAFW17SXZ	9087 25 17	19	34	9
R1/2	25SFAK21SXZ		22	43	17
G1/2	25SAFW21SXZ	9087 25 21	24	37.5	10.5

25SFIW Plug without valve, Female Thread

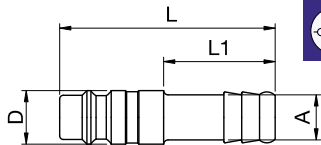
Zinc-plated steel



A			HEX	L	L1
G1/8	25SFIW10SXZ	9086 25 10	14	30	5
G1/4	25SFIW13SXZ	9086 25 13	17	38.5	12
G3/8	25SFIW17SXZ	9086 25 17	19	39.5	12
G1/2	25SFIW21SXZ	9086 25 21	24	44	14

25SFTF Plug without valve, Hose Barb

Zinc-plated steel



A			L	L1	D
6	25SFTF06SXZ	9085 25 06	48	25	12
8	25SFTF08SXZ	9085 25 08	48	25	12
9	25SFTF09SXZ	9085 25 09	48	25	12
10	25SFTF10SXZ	9085 25 10	48	25	12
13	25SFTF13SXZ	9085 25 13	48	25	15