

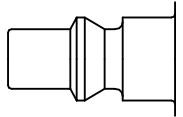


Safety coupling with a self-venting system. Self-venting takes place during disconnection – no risk of pressurised hoses being tossed around. When the sleeve is pulled back, the plug is released yet remains locked in. The coupling valve closes and the air is vented from the air line at the same time. Only then, by operating the sleeve again, can uncoupling take place safely. The system fulfils the requirements of ISO 4414 – increased safety standards in the work place. The plastic sleeve does not scratch working surfaces.

- Available on request:
 - with additional end connections

Safety Note

Reliable functioning can only be guaranteed in conjunction with original Parker Rectus plugs made of steel.



ARO Profile



Self-Venting System

Working Pressure*:

up to 12 bar

Material:

- Coupling: Nickel plated brass
- Plug: Nickel plated steel
- Seals: NBR

Working Temperature:

-20°C up to +60°C (NBR)

Flow Rate Air:

1.400 l/min.

inlet pressure 6 bar, pressure drop 0.5 bar

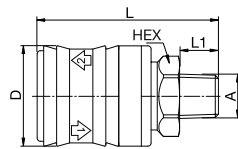
* maximum static working pressure with design factor 4 to 1.



Self-Venting System

14KEAK Coupler with valve, Male Thread

Nickel-plated brass, NBR



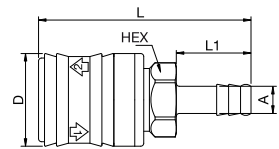
A		HEX	L	L1	D
R1/4	14KEAK13MPN	22	58	9	31
R3/8	14KEAK17MPN	22	58	9	31
R1/2	14KEAK21MPN	24	63	12	31



Self-Venting System

14KETF Coupler with valve, Hose Barb

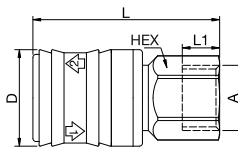
Nickel-plated brass, NBR



A		HEX	L	L1	D
6	14KETF06MPN	22	71	25	31
8	14KETF08MPN	22	71	25	31
9	14KETF09MPN	22	71	25	31
10	14KETF10MPN	22	71	25	31
13	14KETF13MPN	22	71	25	31

14KEIW Coupler with valve, Female Thread

Nickel-plated brass, NBR



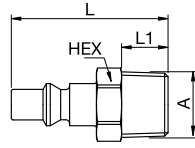
A		HEX	L	L1	D
G1/4	14KEIW13MPN	22	57	9	31
G3/8	14KEIW17MPN	22	57	9	31
G1/2	14KEIW21MPN	24	60	12	31



Self-Venting System

22SFAK Plug without valve, Male Thread

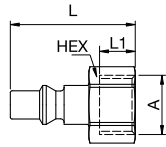
Nickel-plated steel



A			HEX	L	L1
R1/8	22SFAK10SXN		12	35	9
R1/4	22SFAK13SXN	9084 22 13	14	41	12
R3/8	22SFAK17SXN	9084 22 17	17	41	12
R1/2	22SFAK21SXN	9084 22 21	22	46	17

22SFIW Plug without valve, Female Thread

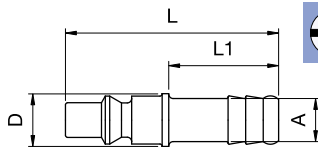
Nickel-plated steel



A			HEX	L	L1
G1/4	22SFIW13SXN	9086 22 13	17	35	9
G3/8	22SFIW17SXN	9086 22 17	19	35	10
G1/2	22SFIW21SXN	9086 22 21	24	35	12

22SFTF Plug without valve, Hose Barb

Nickel-plated steel



A			L	L1	D
6	22SFTF06SXN	9085 22 06	49	25	12
8	22SFTF08SXN	9085 22 08	49	25	12
9	22SFTF09SXN	9085 22 09	49	25	12
10	22SFTF10SXN	9085 22 10	49	25	12
13	22SFTF13SXN	9085 22 13	49	25	15