

Axial Valves



This valve is equipped with a pneumatic or electro-pneumatic actuator, so it can be integrated into simple automated systems.

Technical Characteristics

- **Compatible Fluids:** Compressed air, water, industrial fluids...
Other fluids: please consult us
- **Working Pressure:** 10 bar max.
- **Pilot Pressure:** NC and NO: 4.2 to 8 bar
Double-acting: 3 to 8 bar
- **Working Temperature:** -20°C to +150°C (suffix 20 FKM)
-20°C to +150°C (suffix 30 EPDM)

Reliable performance is dependent upon the type of fluid conveyed, component materials and tubing being used.

Guaranteed for use with a vacuum of 740 mm Hg (97% vacuum).

Advantages

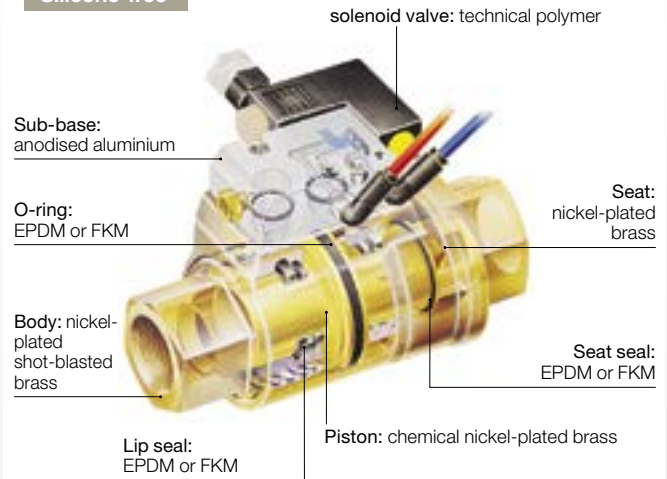
- Very compact
- Simple to install: ready-to-use
- Two seal materials (FKM, EPDM) for a wider chemical and temperature range
- Pneumatic or electro-pneumatic
- Three versions: normally closed, normally open and double-acting

Regulations

- PED
- RoHS
- REACH

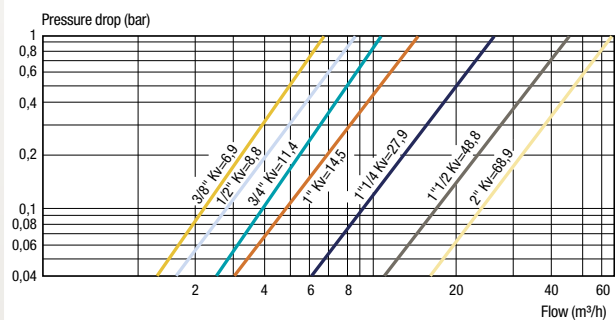
Component Materials

Silicone-free



Flow Curve and Pressure Drop (Kv)

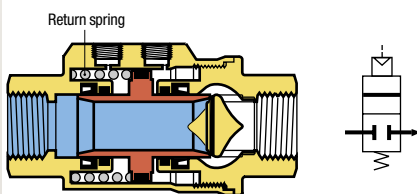
Kv in m³/h (ambient water temperature, under a differential pressure of 1 bar)



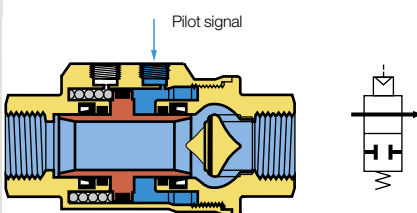
Operation

Depending on operational requirement, air is passed into the actuation chamber to open or close the valve.

Normally Closed Axial Valve (NC)

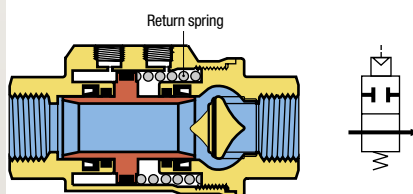


Rest State (valve closed)

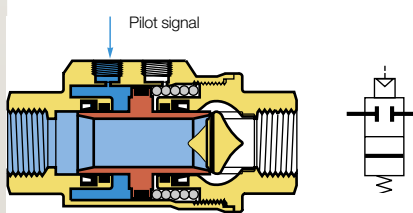


Piloted State (valve open)

Normally Open Axial Valve (NO)

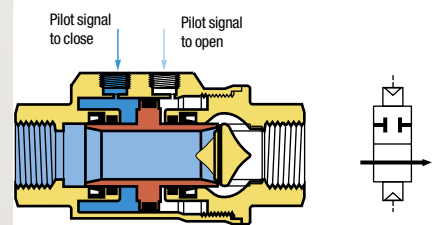


Rest State (valve open)



Piloted State (valve closed)

Double-Acting Axial Valve (DA)



Piloted State (valve closed)

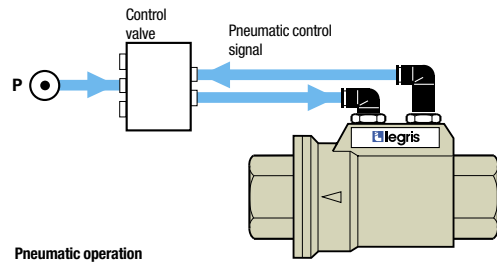
Installation Options

The Parker Legris axial valve offers 3 different control methods dependant on the requirements of the installation:

Pneumatic Control

Example: Double-acting axial valve 4222

- local compressed air control
- for repetitive on/off cycles
- remote control where access to the machine is difficult
- for explosive or explosion prevention areas

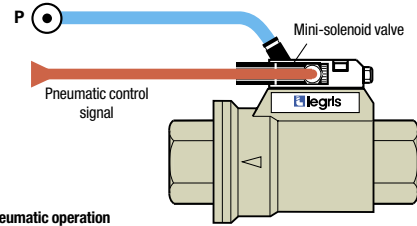


Pneumatic operation

Electro-Pneumatic Control

Example: Normally closed axial valve 4202 + sub-base and Mini-solenoid valve 4298

- for automated industrial systems requiring remote control
- Namur seating plane solenoid valve

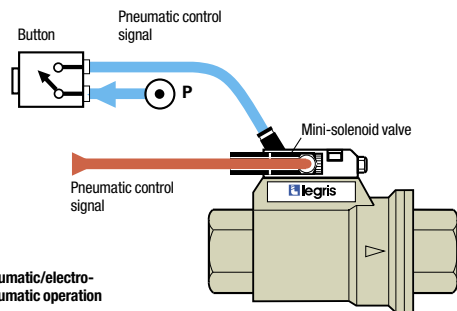


Electro-pneumatic operation

Dual Pneumatic and Electro-Pneumatic Control

Example: Normally open axial valve 4212 + sub-base and Mini-solenoid valve 4298 + Pneumatic push-button 4299

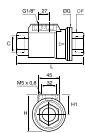
- dual control structure
- for increased safety: prevents localised operating errors
- Namur seating plane solenoid valve



Pneumatic/electro-pneumatic operation

4202..20 Normally Closed Axial Valve with FKM Seal, Female BSPP Thread

Nickel-plated brass, FKM



| C | | F | G | H | H1 | L | Kg |
|--------|----------------|----|-----|-----|------|-----|-------|
| G3/8 | 4202 10 17 20 | 22 | 46 | 54 | 31 | 98 | 0.834 |
| G1/2 | 4202 15 21 20 | 27 | 52 | 60 | 35 | 112 | 1.075 |
| G3/4 | 4202 20 27 20 | 33 | 64 | 70 | 38 | 135 | 1.624 |
| G3/4 | 4202 20 27 30 | 33 | 64 | 70 | 38 | 135 | 1.606 |
| G1 | 4202 25 34 20 | 41 | 69 | 76 | 41.5 | 143 | 2.033 |
| G1 1/4 | 4202 32 42 20* | 50 | 86 | 91 | 48 | 165 | 3.266 |
| G1 1/2 | 4202 40 49 20* | 60 | 96 | 102 | 54 | 180 | 4.195 |
| G2 | 4202 50 48 20* | 75 | 109 | 115 | 60.5 | 207 | 6.465 |

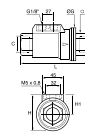
Pilot port: G1/8

Delivered with a silencer

*Models with EC marking

4202..30 Normally Closed Axial Valve with EPDM seal, Female BSPP Thread

Nickel-plated brass, EPDM



| C | | F | G | H | H1 | L | Kg |
|--------|----------------|----|-----|-----|------|-----|-------|
| G3/8 | 4202 10 17 30 | 22 | 46 | 54 | 31 | 98 | 0.818 |
| G1/2 | 4202 15 21 30 | 27 | 52 | 60 | 35 | 112 | 1.071 |
| G1 | 4202 25 34 30 | 41 | 69 | 76 | 41.5 | 143 | 2.013 |
| G1 1/4 | 4202 32 42 30* | 50 | 86 | 91 | 48 | 165 | 3.315 |
| G1 1/2 | 4202 40 49 30* | 60 | 96 | 102 | 54 | 180 | 4.195 |
| G2 | 4202 50 48 30* | 75 | 109 | 115 | 60.5 | 207 | 6.360 |

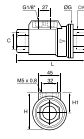
Pilot port: G1/8

Delivered with a silencer

*Models with EC marking

4212..20 Normally Open Axial Valve with FKM Seal, Female BSP Thread

Nickel-plated brass, FKM

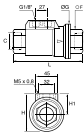


| C | | F | G | H | H1 | L | Kg |
|--------|----------------|----|-----|-----|------|-----|-------|
| G3/8 | 4212 10 17 20 | 22 | 46 | 54 | 31 | 98 | 0.824 |
| G1/2 | 4212 15 21 20 | 27 | 52 | 60 | 35 | 112 | 1.096 |
| G3/4 | 4212 20 27 20 | 33 | 64 | 70 | 38 | 135 | 1.637 |
| G1 | 4212 25 34 20 | 41 | 69 | 76 | 41.5 | 143 | 2.025 |
| G1 1/2 | 4212 40 49 20* | 60 | 96 | 102 | 54 | 180 | 4.188 |
| G2 | 4212 50 48 20* | 75 | 109 | 115 | 60.5 | 207 | 6.555 |

Pilot port: G1/8
Delivered with a silencer
*Models with EC marking

4222..20 Double-Acting Axial Valve with FKM Seal, Female BSP Thread

Nickel-plated brass, FKM

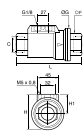


| C | | F | G | H | H1 | L | Kg |
|--------|----------------|----|-----|-----|------|-----|-------|
| G3/8 | 4222 10 17 20 | 22 | 46 | 54 | 31 | 98 | 0.802 |
| G1/2 | 4222 15 21 20 | 27 | 52 | 60 | 35 | 112 | 1.042 |
| G3/4 | 4222 20 27 20 | 33 | 64 | 70 | 38 | 135 | 1.571 |
| G1 | 4222 25 34 20 | 41 | 69 | 76 | 41.5 | 143 | 1.942 |
| G1 1/2 | 4222 40 49 20* | 60 | 96 | 102 | 54 | 180 | 3.995 |
| G2 | 4222 50 48 20* | 75 | 109 | 115 | 60.5 | 207 | 6.275 |

Pilot port: G1/8
*Models with EC marking

4222..30 Double Acting Axial Valve with EPDM seal, Female BSP Thread

Nickel-plated brass, EPDM

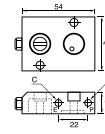


| C | | F | G | H | H1 | L | Kg |
|--------|----------------|----|----|----|----|-----|-------|
| G1/2 | 4222 15 21 30 | 27 | 52 | 60 | 35 | 112 | 1.046 |
| G1 1/4 | 4222 32 42 30* | 50 | 86 | 91 | 48 | 165 | 3.301 |

Pilot port: G1/8
*Models with EC marking

4298 Sub-Base for Solenoid Pilot Valve

Treated aluminium, NBR



| C | | Kg |
|--------|------------|-------|
| M5x0.8 | 4298 00 01 | 0.095 |

The sub-base is fitted directly to the axial valve and allows the mounting of a 15x15 solenoid valve.
Supplied with 2 fixing bolts, silencer and seats.

4298 Mini-Solenoid Valve 1W/12VA

Anodized aluminium

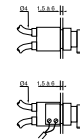


| | Voltage | Kg |
|------------|-------------|-------|
| 4298 01 01 | 24V = CC* | 0.051 |
| 4298 01 02 | 24V ~ CA** | 0.058 |
| 4298 02 01 | 110V ~ CA** | 0.051 |
| 4298 02 02 | 220V ~ CA** | 0.054 |

*Direct current
**Alternating current

4299 Pneumatic Button

Nickel-plated brass, technical polymer



| | Contact | Kg |
|------------|---------|-------|
| 4299 01 01 | | 0.090 |

Bulkhead fixing hole diameter: Ø22 mm