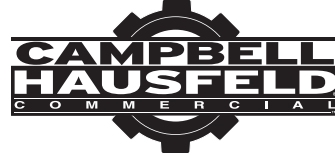
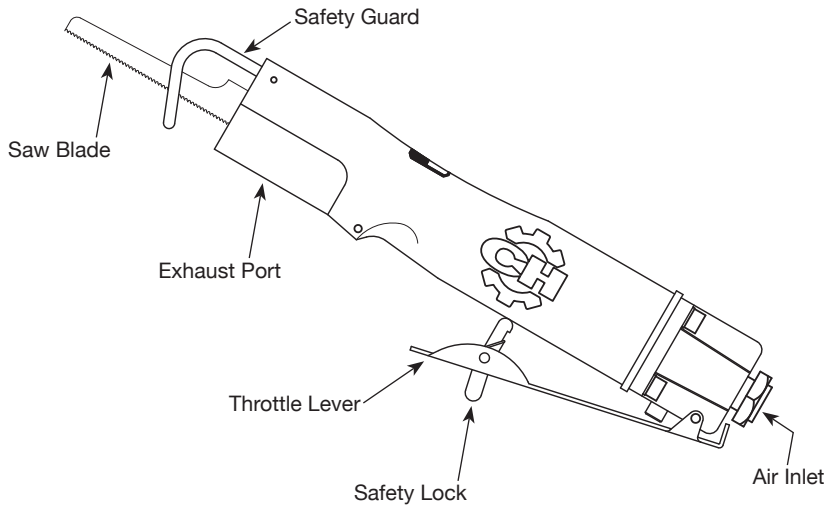


Reciprocating Saw



MODEL: CL154000AV



Description

Air reciprocating saws are designed for cutting a variety of materials, and can be used with metal or wood cutting blades. This tool is especially useful for cutting plywood or automotive sheet metal.

Specifications

Average Air Consumption	2.2 SCFM @ 90 psig (25% usage)
Continuous Air Consumption	8.6 SCFM @ 90 psig (100% usage)
Max. Operating Pressure	90 psig
Rated Strokes per Minute	9,000
Cutting Capacity	
Mild Steel	Max 1/16 inch
Wood	Max 1/2 inch plywood
Min. Diameter Circle Cut	3 inch
Min. Starting Hole	1/2 inch
Air Inlet	1/4 inch NPT (Female)
Minimum Hose Size	3/8 inch
Weight	1.4 lbs.

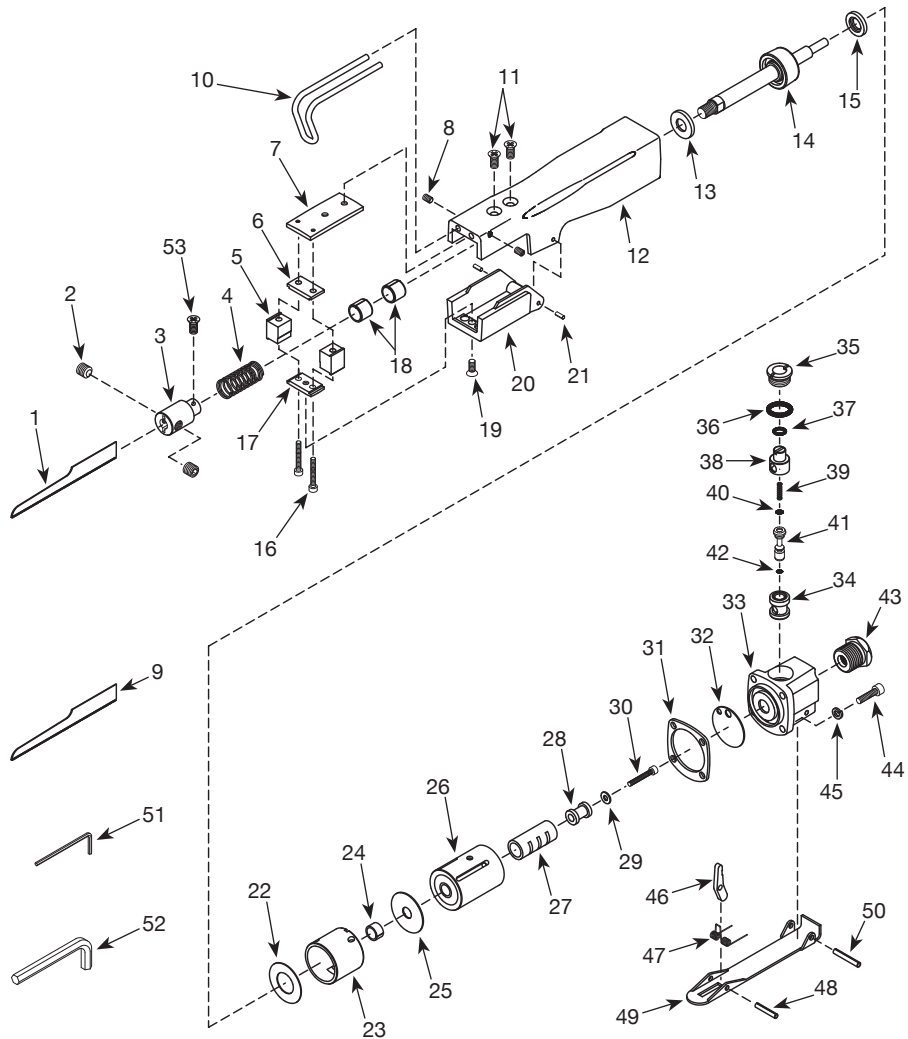
**For Replacement Parts or Technical Assistance,
Call 1-855-504-5678**

Please provide following information:

- Model number
- Serial number (if any)
- Part description and number as shown in parts list

Address any correspondence to:

Campbell Hausfeld
Attn: Customer Service
100 Production Drive
Harrison, OH 45030 U.S.A.



REGISTER YOUR PRODUCT ONLINE NOW!
<http://reg.ch-commercial.com>

REPLACEMENT PARTS LIST

Ref. No.	Description	Part No.	Qty.
1	Saw blade, 32-tpi	▼	1
2	Set screw	○◇	2
3	Blade chuck	◇	1
4	Spring	◇	1
5	Blade guide	△	2
6	Upper wear shoe	△	1
7	Guide plate	△	1
8	Set screw	□	2
9	Saw blade, 24-tpi	▼	1
10	Long saw blad safety guard	□	1
11	Screw	△○	2
12	Housing	--	1
13	Front bumper	▲	1
14	Piston	▲	1
15	Rear bumper	▲	1
16	Cap screw	△○	2
17	Bridge	△	1
18	Bushing	■	2
19	Screw	■★○	1
20	Chuck cover	★	1
21	Roll pin	★	2
22	Packing	■▲	1
23	Cylinder	▲	1
24	Bushing	■●	1
25	Packing	■●	1
26	Valve case	●	1
27	Valve sleeve	●	1
28	Actuate valve	●	1
29	Washer	○	1
30	Cap screw	▲○	1
31	Gasket	■▲	1
32	Packing	■	1
33	Valve block	◆	1
34	Valve bushing	◆	1
35	Valve screw	▽	1

Continued on next page

REPLACEMENT PARTS LIST (CONTINUED)

Ref. No.	Description	Part No.	Qty.
36	O-ring	■▽	1
37	O-ring	■▽	1
38	Air controller/regulator	▽	1
39	Valve spring	■▽	1
40	O-ring	■▽	1
41	Valve stem	▽	1
42	O-ring	■▽	1
43	Inlet bushing	◆	1
44	Cap screw	○	4
45	Lock washer	○	4
46	Pawl	✕	1
47	Spring	✕	1
48	Roll pin	✕	1
49	Throttle lever	✕	1
50	Roll pin	✕	1
51	2mm Hex wrench	--	1
52	4mm Hex wrench	--	1
53	Set screw	◇	1

REPLACEMENT PARTS KITS

Ref. No.	Description	Part No.
▲	Piston assembly kit	SV628700AV
■	Tune-up/gasket kit	SV629800AV
●	Valve case assembly	SV628900AV
◆	Valve block assembly	SV629000AV
▼	Replacement saw blades	PA100200AV
★	Chuck cover kit	SV629100AV
✕	Trigger assembly kit	SV629200AV
△	Blade guide kit	SV629300AV
□	Work guide set	SV629400AV
○	Screw kit	SV629500AV
◇	Blade chuck kit	SV629600AV
▽	Regulator/valve kit	SV629700AV
--	Not available	