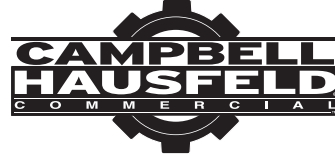
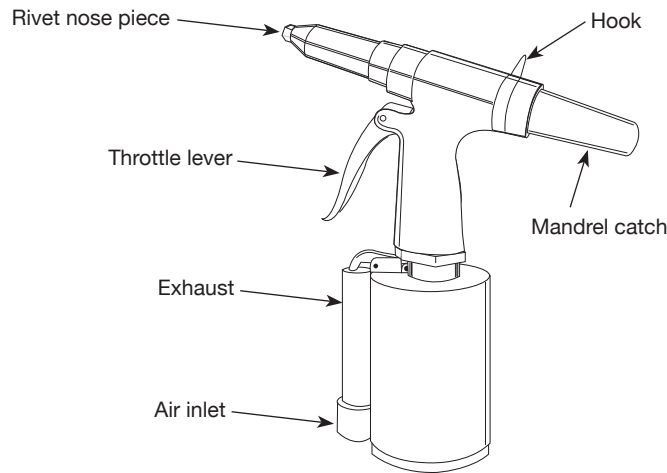


## Air Powered Rivet Gun



MODEL: CL153900AV



### Description

Air powered rivet guns are air tools designed for riveting a variety of materials and can be used with up to 3/16 inch steel rivets (maximum mandrel diameter of 1/8 inch).

### Specifications

Average . . . . .	0.2 SCFM @ 90 psi
Air Consumption . . . . .	(20% Usage)
Continuous . . . . .	1.1 SCFM @ 90 psi
Air Consumption . . . . .	(100% Usage)
Max. Operating Pressure . . . . .	90 PSIG
Minimum Hose Size. . . . .	.3/8 inch
Maximum Pull . . . . .	2,000 lbs.
Design Type. . . . .	Air/Hydraulic
Max. Rivet Mandrel Diameter. . . . .	1/8 inch
Nose Piece for the . . . . .	3/16 inch, 5/32 inch,
Following Rivet Sizes . . . . .	1/8 inch, 3/32 inch
Min. Head Clearance . . . . .	9 inch
Air Inlet . . . . .	1/4 inch NPT (F)
Tool Weight . . . . .	3.5 lbs.

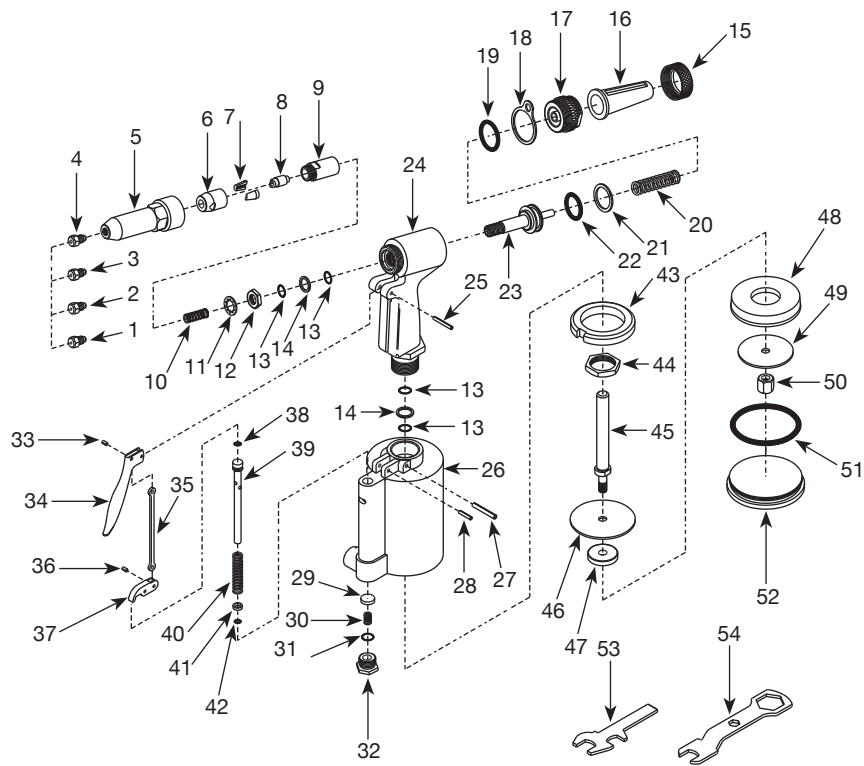
**For Replacement Parts or Technical Assistance,  
Call 1-855-504-5678**

Please provide following information:

- Model number
- Serial number (if any)
- Part description and number as shown in parts list

Address any correspondence to:

Campbell Hausfeld  
Attn: Customer Service  
100 Production Drive  
Harrison, OH 45030 U.S.A.



**REGISTER YOUR PRODUCT ONLINE NOW!**  
<http://reg.ch-commercial.com>

**REPLACEMENT PARTS LIST**

Ref. No.	Description	Part No.	Qty.
1	3/32 inch Nose piece	□	1
2	1/8 inch Nose piece	□	1
3	5/32 inch Nose piece	□	1
4	3/16 inch Nose piece	□	1
5	Frame head	■	1
6	Jaw case front tart	■	1
7	Jaw	○	2
8	Jaw pusher	○	1
9	Jaw case end tart	■	1
10	Jaw pusher spring	▼	1
11	Case washer spring	▼	1
12	Case lock nut	▼	1
13	Back-up o-ring	▼	4
14	Back-up ring	▼	2
15	Frame cap nut	◆	1
16	Safety cap	◆	1
17	Frame cap	◆	1
18	Hanging clip	▼	1
19	Frame cap o-ring	▼	1
20	Return spring	▼	1
21	Back-up ring	▼	1
22	Oil piston o-ring	▼	1
23	Oil piston	◆	1
24	Frame head	--	1
25	Roll pin	▼	1
26	Air cylinder with inlet screen	--	1
27	Frame pin	▼	1
28	Lever pin	▼♣	1
29	Valve seal	▼	1
30	Valve spring	▼	1
31	Valve cap o-ring	▼	1
32	Valve cap	--	1
33	Trigger pin	▼♣	1
34	Trigger	♣	1
35	Trigger rod	♣	1

*Continued on next page*

**REPLACEMENT PARTS LIST (CONTINUED)**

Ref. No.	Description	Part No.	Qty.
36	Connector pin	▼ ❁	1
37	Trigger lever	❁	1
38	Valve pusher o-ring	▼	1
39	Valve pusher	❁	1
40	Valve spring	▼	1
41	Valve collar	▼	1
42	Collar o-ring	▼	1
43	Rubber cushion	⤵	1
44	Frame lock nut	--	1
45	Air piston stem	⤵	1
46	Big iron plate	--	1
47	Spacer	--	1
48	Air piston ring	⤵	1
49	Small iron plate	--	1
50	Air piston lock nut	--	1
51	Cylinder o-ring	▼	1
52	Cylinder cap	⤵	1
53	Combination nose wrench	▲	1
54	Combination jaw wrench	▲	1

**REPLACEMENT PARTS KITS**

Ref. No.	Description	Part No.
▼	Tune-up and repair kit	SV153901AV
○	Replacement jaw kit	SV153902AV
□	Nose piece adapter kit	SV153903AV
▲	Wrench kit	SV153904AV
■	Jaw case kit	SV633600AV
◆	Oil piston kit	SV633700AV
⤵	Piston kit	SV633800AV
❁	Trigger kit	SV633900AV
--	Not available	