

Preparation of compressed air ► Reservoir

## Series AR1

Brochure



Preparation of compressed air ▶ Reservoir

**Series AR1**

Series AR1  
▶ G 1/2 - G 2 ▶ 1 - 90 L

3

**Accessories**

Coupling kit  
▶ AR1

7

## Preparation of compressed air ► Reservoir

### Series AR1

► G 1/2 - G 2 ► 1 - 90 L



3513\_011

Working pressure min./max.	See table below
Ambient temperature min./max.	-40°C / +100°C
Medium temperature min./max.	-40°C / +100°C
Medium	Compressed air
Air reservoir volume	See table below

Materials:	
Housing	Steel, black painted

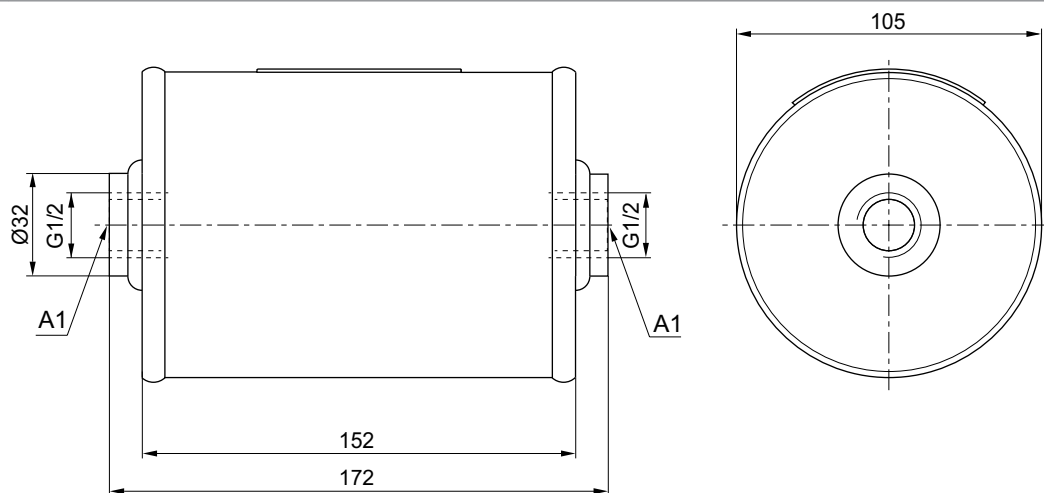
#### Technical Remarks

- The pressure dew point must be at least 15 °C under ambient and medium temperature and may not exceed 3 °C.
- The oil content of compressed air must remain constant during the life cycle.
- Use only the approved oils from AVENTICS, see chapter „Technical information“.

Port A1	Port A2	Working pressure min./max. [bar]	Air reservoir volume [L]	Reservoir Ø [mm]	Fig.	Part No.
G 1/2	-	0 / 11	1	105	Fig. 1	<b>3513000000</b>
G 1	G 1/2	0 / 11	3.2	101.6	Fig. 2	<b>3513000010</b>
		0 / 10	5	154	Fig. 3	<b>3513000020</b>
		0 / 11	10	206	Fig. 4	<b>3513000030</b>
		0 / 10	20	246	Fig. 5	<b>3513000040</b>
		0 / 11	40	276	Fig. 6	<b>3513000050</b>
G 2	G 1/2	0 / 11	90	350	Fig. 7	<b>3513000060</b>

Reservoirs with a diameter up to 206 mm are fixed with tensioning straps.  
You can find mounting kits for larger diameters without feet in the accessories.

#### Dimensions, Fig. 1



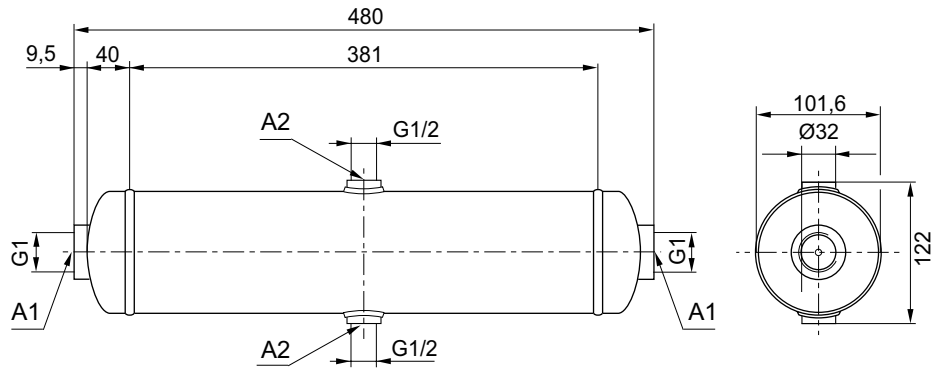
A1 = horizontal connection

17222

### Series AR1

▶ G 1/2 - G 2 ▶ 1 - 90 L

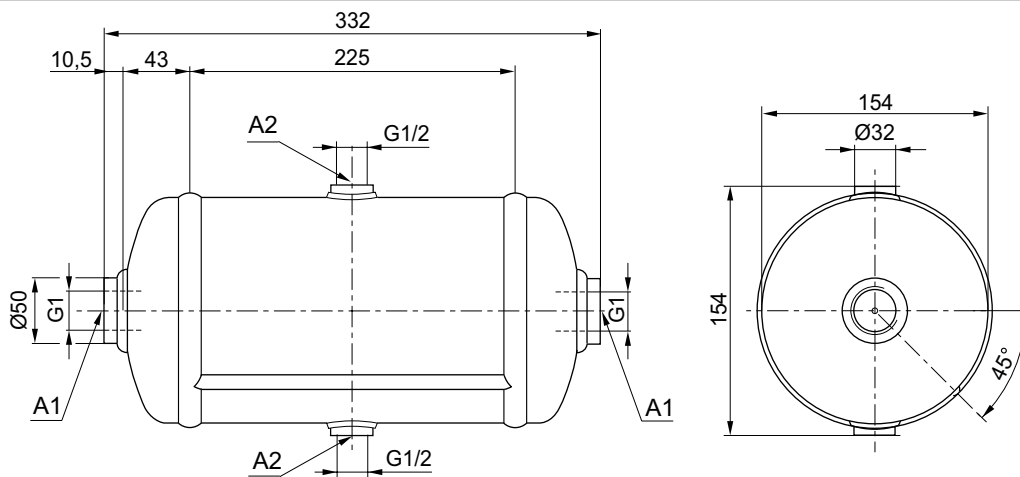
Dimensions, Fig. 2



17223

A1 = horizontal connection  
A2 = radial connection

Dimensions, Fig. 3



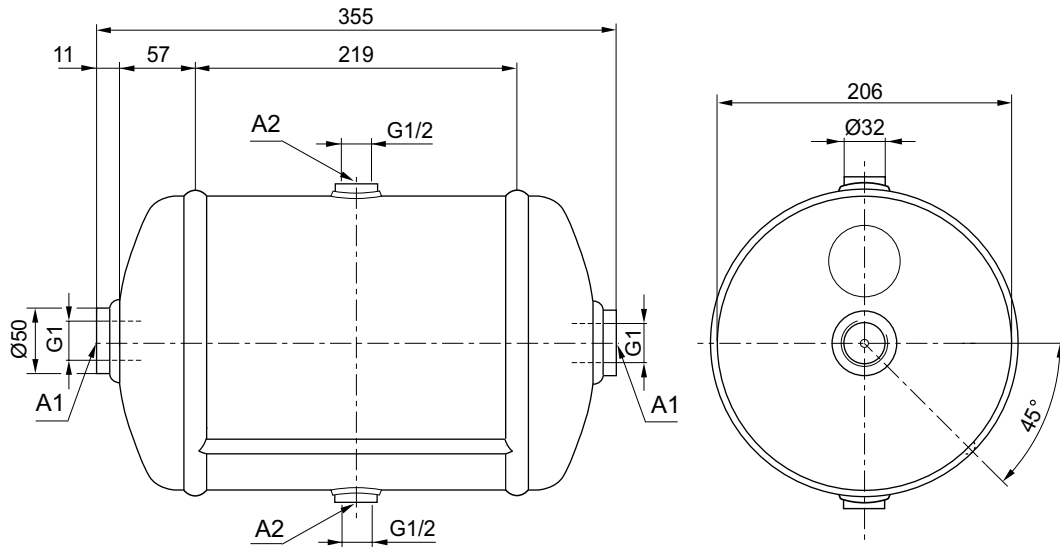
17224

A1 = horizontal connection  
A2 = radial connection

## Preparation of compressed air ► Reservoir

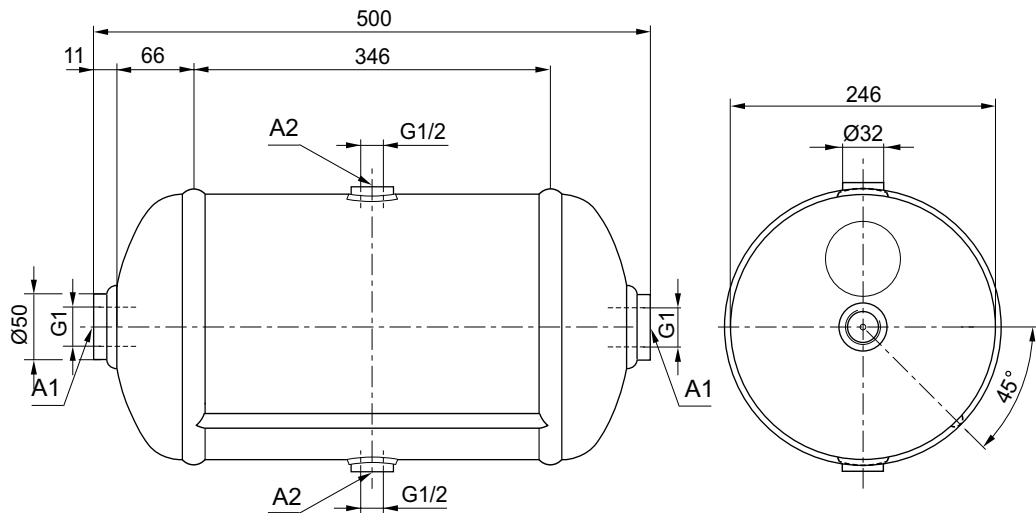
### Series AR1 ► G 1/2 - G 2 ► 1 - 90 L

Dimensions, Fig. 4



A1 = horizontal connection  
A2 = radial connection

Dimensions, Fig. 5

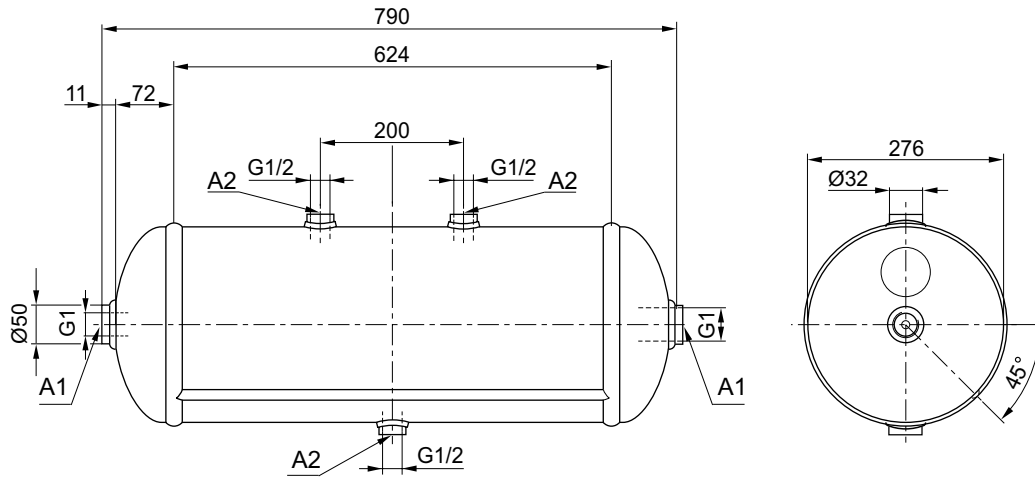


A1 = horizontal connection  
A2 = radial connection

### Series AR1

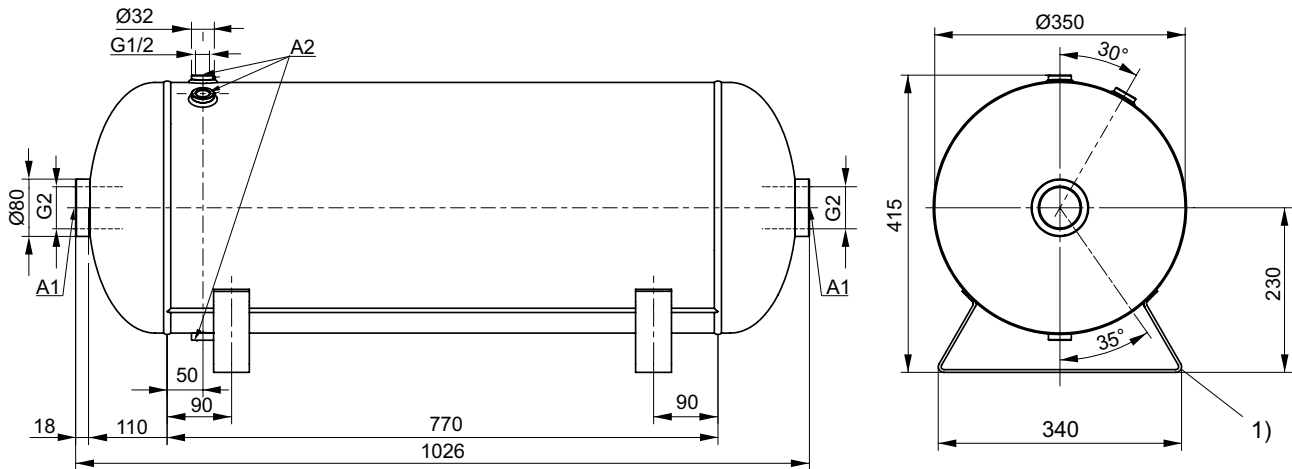
▶ G 1/2 - G 2 ▶ 1 - 90 L

Dimensions, Fig. 6



A1 = horizontal connection  
A2 = radial connection

Dimensions, Fig. 7



A1 = horizontal connection  
A2 = radial connection  
1) Foot

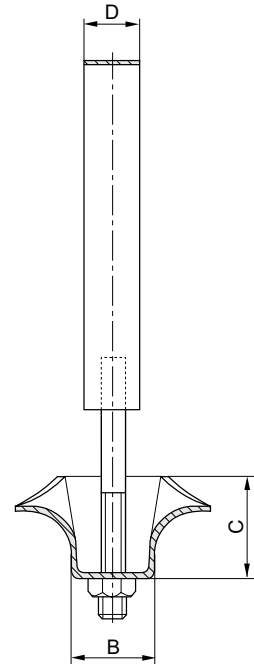
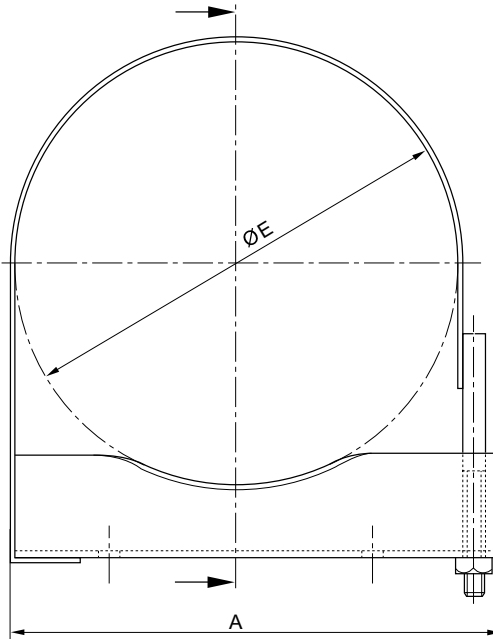
Preparation of compressed air ▶ Reservoir

Series AR1  
Accessories

Coupling kit  
▶ AR1



16421



16409

Part No.	A	B	C	D	ØE	Delivery quantity [Piece]	Weight [kg]				
<b>4519011002</b>	225	36	45	30	206	1	0.763				
<b>4519011012</b>	265	36	45	30	246	1	0.886				
<b>4519011022</b>	295	36	45	30	276	1	1.13				

AVENTICS GmbH  
Ulmer Straße 4  
30880 Laatzen, GERMANY  
Phone +49 511 2136-0  
Fax +49 511 2136-269  
www.aventics.com  
info@aventics.com



Find more contact information at  
[www.aventics.com/contact](http://www.aventics.com/contact)

Only use the AVENTICS products shown in industrial applications. Read the product documentation completely and carefully before using the product.

Observe the applicable regulations and laws of the respective country. When integrating the product into applications, note the system manufacturer's specifications for safe use of the product.

The data specified only serve to describe the product.

No statements concerning a certain condition or suitability for a certain application can be derived from our information.

The information given does not release the user from the obligation of own judgment and verification. It must be remembered that the products are subject to a natural process of wear and aging.

27-09-2016

An example configuration is depicted on the title page. The delivered product may thus vary from that in the illustration. Subject to change. © AVENTICS S.à r.l.  
This document, as well as the data, specifications and other information set forth in it, are the exclusive property of AVENTICS S.à r.l.. It may not be reproduced or given to third parties without its consent. PDF online