



We provide superior performing compressed air & gas systems with engineered longevity to reduce operating costs and improve productivity.



## ENGINEERED FOR SUPERIOR PERFORMANCE

Compressed Air, Vacuum & Inert Gas Piping Systems



Europe Headquarters -  
AIRpipe Europe

4 impasse Augustin Fresnel, 44800 Saint-Herblain, France  
Tel: +33 (0)2 40 05 10 20  
Email: [contact@airpipe-europe.com](mailto:contact@airpipe-europe.com)  
Web: [www.airpipe-europe.com](http://www.airpipe-europe.com)



Publication AIRpipe – #7/2018/EN/EU  
AIRpipe reserves the rights to modify this documents without prior notice.



AIRpipe specializes in solutions for compressed air and fluids distribution. Throughout the last 12 years we have continued to invest in R&D, by taking into account market feedback and real-world conditions. Today, our new generation of products are engineered to be the most superior products available, advancing the compressed air and inert gas piping systems.

AIRpipe has a 100% ownership of more than 31,000 m2 layout of manufacturing plants, R&D and logistics. We are committed to being your total solution provider for compressed air and fluids distribution systems.



### Superior Reliability & Longevity

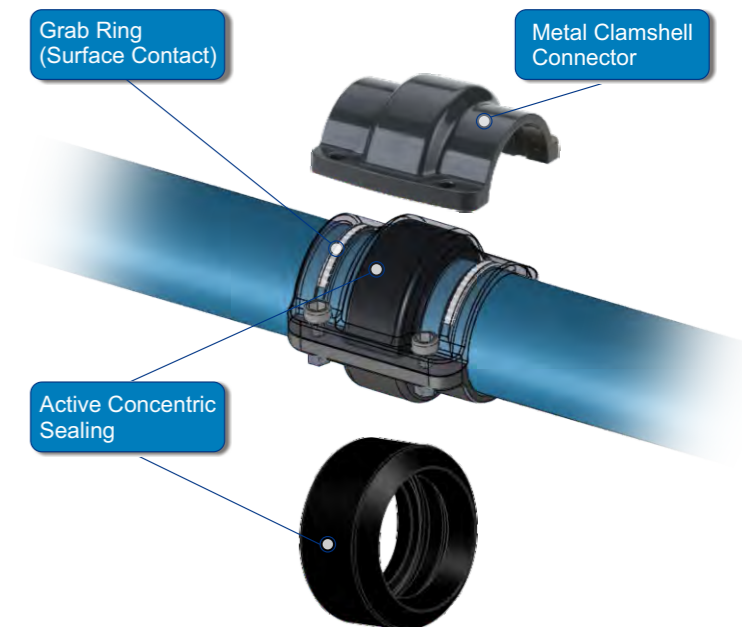
- Highly durable materials resistant to corrosion, vibration, thermal variation, and outdoor weather conditions.
- Metal clamshell connectors for all diameters are stronger and more durable versus polymer fittings.
- Unique grab ring design with surface contact (20-50mm) and lugged convex ring (63-200mm) allows for zero risk of disconnection.
- Special active concentric seals, using surface contact and inner active pressure sealing, provide leak-free performance, even in high vibration applications. This sealing technology doubles the longevity and pressure endurance.

### Energy & Cost Savings

- The low friction due to smooth inner surface of aluminium pipes and full flow connections ensures a constant supply of clean air at a reduced pressure drop, resulting in significant energy savings.
- Guaranteed leak-free performance and superior longevity means much more savings versus aging traditional pipe systems.

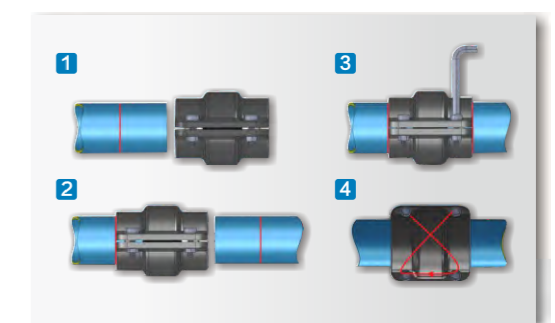
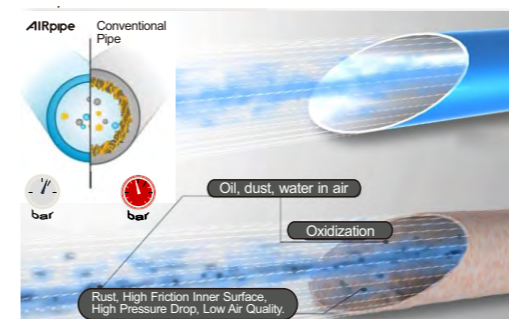
### Adaptable, Quick & Easy Installation

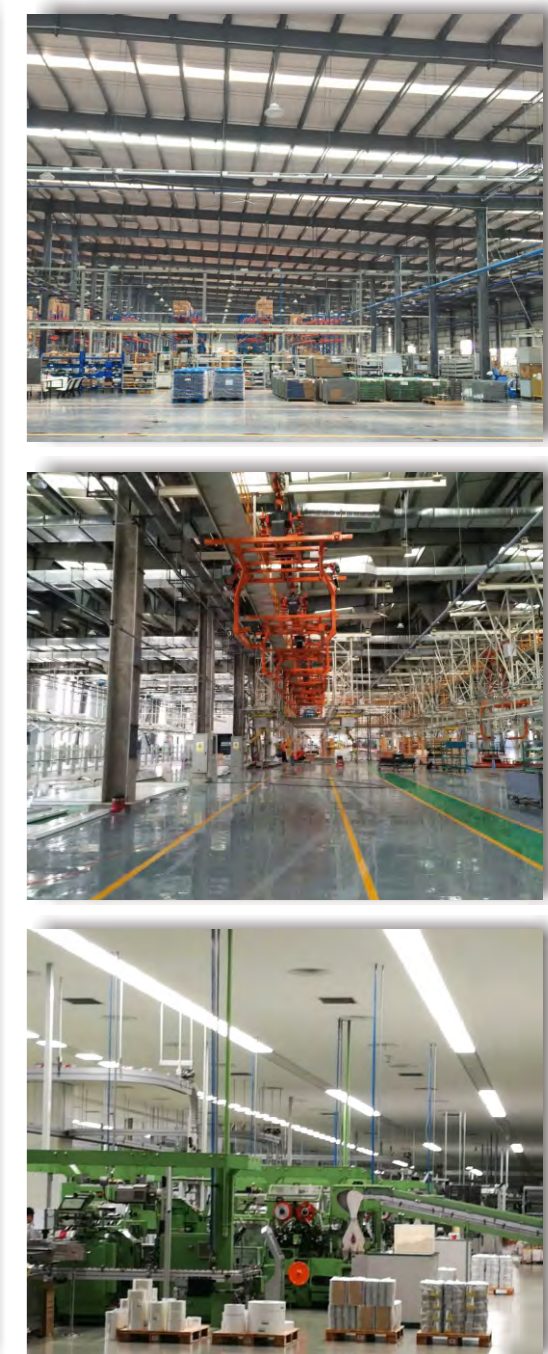
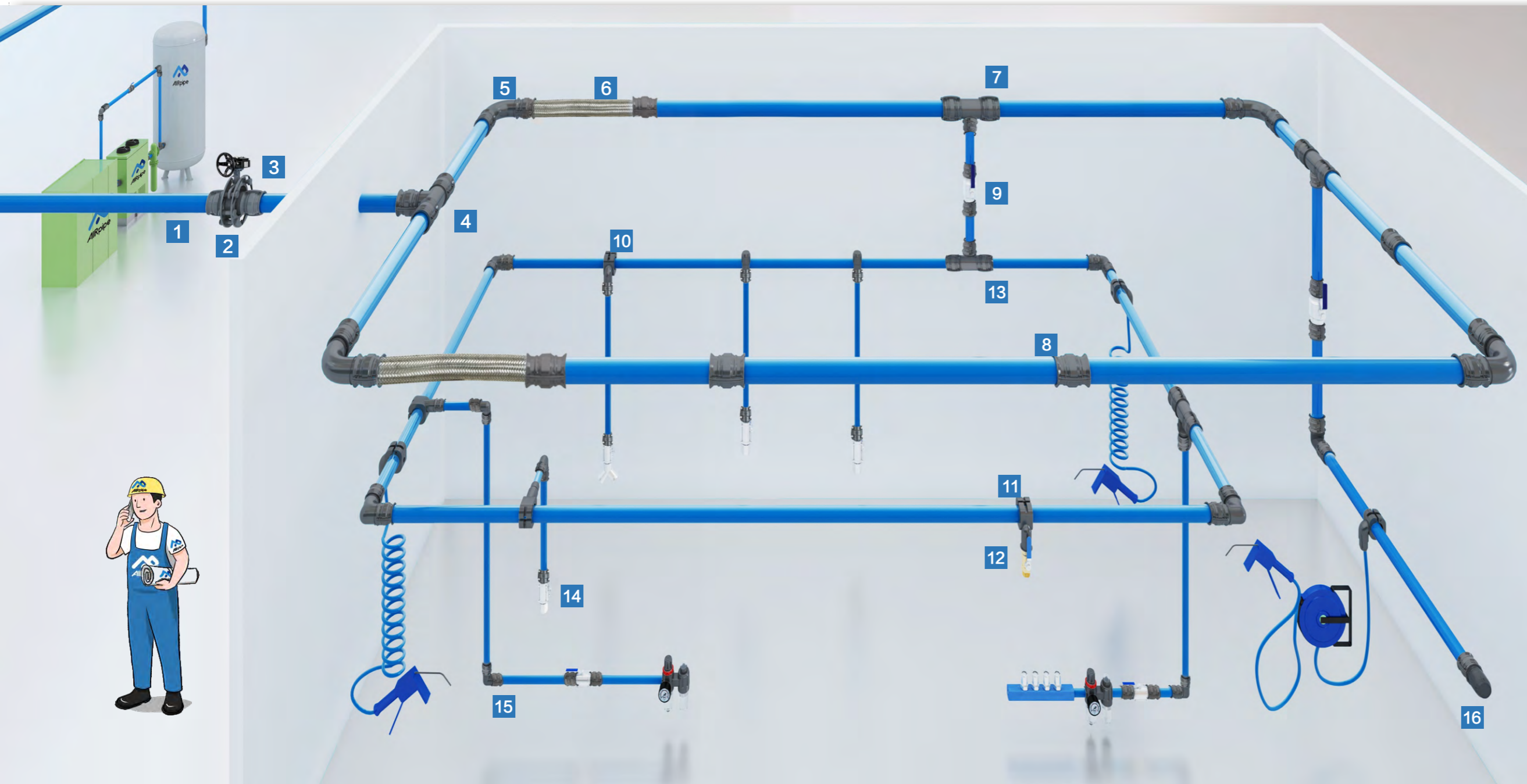
- Complete range of pipe, fittings and accessories works easily for new projects, renovation & extensions.
- Very quick and easy to install, AIRpipe requires no special tooling, no welding, no gluing, no thread cutting and no special training.
- Reusable, lightweight and quick-cut, AIRpipe modular design allows for easy modifications.
- Quick drops can be added at any time to create new points of use.



**Dual Performance**

- Surface contact and active sealing
- Working Pressure up to 16bar
- 20 year life





**1** Aluminum Pipe

**2** Flanged Connector

**3** Quick Connect Butterfly Valve

**4** Equal Tee

**5** 90° Elbow

**6** Flexible Hose

**7** Reducing Tee

**8** Pipe-to-Pipe Connector

**9** Quick-Connect Ball Valve

**10** Aluminum Quick Drop

**11** Quick Drop (Femal Thread)

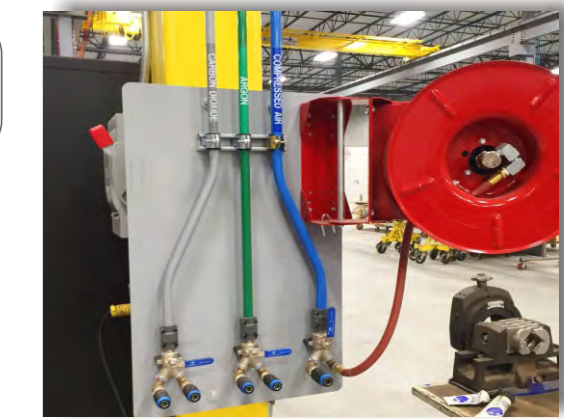
**12** Brass Ball Valve

**13** Quick-Connect Equal Tee

**14** Threaded Quick Ball Valve

**15** Quick-Connect 90° Elbow

**16** End Cap



# Product Range & Features

## Rigid Aluminum Pipes



- Up to max. 200mm diameter.
- Available in blue, grey and green colour, high-quality powder-coating.
- Suitable for compressed air, vacuum and inert gases
- Light-weight & corrosion-free.

## Pipe Connectors



- All quick-connect design.
- Superior reliability and longevity.
- Full range of straight connector, elbow, reducer, tee, threaded nipple socket, end cap.
- Reusable, non-flammable material.

## Quick Drops



- Quick installation to main ring.
- Can be used vertically or horizontally.
- Multiple possible configurations: connected to pipe or to hose, and threaded connection available.
- Design traps water and does not allow water to enter downstream point of use.

## Ball & Butterfly Valves



- Quick connection.
- Available with BSP thread, flange and quick-connect connector types.
- Full-flow design ensures less pressure drop.

## Flexible Hoses



- Suitable for compressor outlet to absorb vibration.
- Allows for expansion and contraction of the piping system.
- Bypass obstacles when necessary.
- Resistant to mineral or synthetic lubricated oils.

## Tools & Fixing Accessories



- Suitable for various pipe systems.
- For installation of pipes to wall, roof or canal, vertically or horizontally.
- Dedicated design to work best with AIRpipe products.

## BLUE ALUMINUM PIPE



AIRpipe	DN (mm)	OD	ID
301 00 0100 01	20	20.1	17.5
301 00 0200 01	25	25.1	22.5
301 00 0400 01	40	40.1	36.5
301 00 0500 01	50	50.1	45.7
301 00 0600 01	63	67.6	63.0
301 00 0700 01	80	84.8	80.0
301 00 0800 01	100	101.8	96.8
301 00 1000 01	150	153.0	147.5
301 00 1100 01	200	205.0	197.8

## GREEN ALUMINUM PIPE



AIRpipe	DN (mm)	OD	ID
301 00 0100 03	20	20.1	17.5
301 00 0200 03	25	25.1	22.5
301 00 0400 03	40	40.1	36.5
301 00 0500 03	50	50.1	45.7
301 00 0600 03	63	67.6	63.0
301 00 0700 03	80	84.8	80.0
301 00 0800 03	100	101.8	96.8
301 00 1000 03	150	153.0	147.5
301 00 1100 03	200	205.0	197.8

## EQUAL 90° ELBOW



AIRpipe	DN (mm)	DN (mm)
302 03 0100 05	20	20
302 03 0200 05	25	25
302 03 0400 02	40	40
302 03 0500 02	50	50
*Union connectors included		
302 03 0600 01	63	63
302 03 0700 01	80	80
302 03 0800 01	100	100
302 03 1000 01	150	150
302 03 1100 01	200	200

\*Use two union connectors

## EQUAL 45° ELBOW



AIRpipe	DN (mm)	DN (mm)
302 04 0100 05	20	20
302 04 0200 05	25	25
302 04 0400 02	40	40
302 04 0500 02	50	50
*Union connectors included		
302 04 0600 01	63	63
302 04 0700 01	80	80
302 04 0800 01	100	100
302 04 1000 01	150	150
302 04 1100 01	200	200

\*Use two union connectors

## GREY ALUMINUM PIPE



AIRpipe	DN (mm)	OD	ID
301 00 0100 02	20	20.1	17.5
301 00 0200 02	25	25.1	22.5
301 00 0400 02	40	40.1	36.5
301 00 0500 02	50	50.1	45.7
301 00 0600 02	63	67.6	63.0
301 00 0700 02	80	84.8	80.0
301 00 0800 02	100	101.8	96.8
301 00 1000 02	150	153.0	147.5
301 00 1100 02	200	205.0	197.8

## END CAP



AIRpipe	DN (mm)
302 06 0100 05	20
302 06 0200 05	25
302 06 0400 02	40
302 06 0500 02	50
*Union connector included	
302 06 0600 01	63
302 06 0700 01	80
302 06 0800 01	100
302 06 1000 01	150
302 06 1100 01	200

\*Use one union connector

## REDUCING TEE



AIRpipe	DN (mm)	DN (mm)
302 07 0201 05	25	20
302 07 0402 05	40	25
302 07 0502 05	50	25
302 07 0504 02	50	40
302 07 0604 02	63	40
302 07 0605 02	63	50
302 07 0704 02	80	40
302 07 0705 02	80	50
302 07 0805 02	100	50

\*Union connectors included below size 63

302 07 0706 01	80	63
302 07 0806 02	100	63
302 07 0807 02	100	80
302 07 1006 01	150	63
302 07 1007 01	150	80
302 07 1008 01	150	100
302 07 1106 01	200	63
302 07 1107 01	200	80
302 07 1108 01	200	100
302 07 1110 01	200	150

\*Use three union connectors

## LATERAL REDUCING TEE



AIRpipe	DN (mm)	DN (mm)
302 12 0807 01	100	80
302 12 1007 01	150	80
302 12 1008 01	150	100
302 12 1108 01	200	100
302 12 1110 01	200	150

\*Use three union connectors

## PIPE TO PIPE CONNECTORS



AIRpipe	DN (mm)
302 02 0100 05	20
302 02 0200 05	25
302 02 0400 05	40
302 02 0500 05	50
302 02 0601 05	63
302 02 0701 08	80
302 02 0801 08	100
302 02 1001 05	150
302 02 1101 05	200

## EQUAL TEE



AIRpipe	DN (mm)
302 05 0100 05	20
302 05 0200 05	25
302 05 0400 02	40
302 05 0500 02	50
*Union connectors included	
302 05 0600 01	63
302 05 0700 01	80
302 05 0800 01	100
302 05 1000 01	150
302 05 1100 01	200

\*Use three union connectors

## REDUCING PIPE TO PIPE CONNECTORS



AIRpipe	DN (mm)	DN (mm)
302 21 0201 05	25	20
302 21 0402 05	40	25
302 21 0502 05	50	25
302 21 0504 02	50	40
302 21 0604 02	63	40
302 21 0605 02	63	50
302 21 0705 02	80	50
*Union connectors included below size 63		
302 21 0706 01	80	63
302 21 0806 01	100	63
302 21 0807 01	100	80
302 21 1007 01	150	80
302 21 1008 01	150	100
302 21 1110 01	200	150

\*Use two union connectors

## LATERAL EQUAL TEE



AIRpipe	DN (mm)
302 09 0600 01	63
302 09 0700 01	80
302 09 0800 01	100
302 09 1000 01	150
302 09 1100 01	200

\*Use three union connectors

## ALUMINIUM FEMALE THREADED ADAPTOR



AIRpipe	DN (mm)	BSP
302 19 0100 05	20	1/2"
302 19 0101 05	20	3/4"
302 19 0200 06	25	1/2"
302 19 0202 05	25	1"
302 19 0404 02	40	1 1/2"
302 19 0505 02	50	2"

\*Union connector included

302 19 0606 01	63	2 1/2"
302 19 0707 01	80	3"

\*Use one union connector



**FIXTURE CLIPS**



Clips, Plastic

AIRpipe	DN mm
302 22 0100 01	20
302 22 0200 01	25
302 22 0400 01	40
302 22 0500 01	50
302 22 0600 01	63
302 22 0700 01	80
302 22 0800 01	100

\*M8 thread



Fixture, Steel

AIRpipe	DN mm
302 22 0401 01	40
302 22 0501 01	50
302 22 0601 01	63
302 22 0701 01	80
302 22 0801 01	100
302 22 1001 01	150
302 22 1101 01	200

**CLIP SPACER**



AIRpipe	DN mm
302 27 0001 01	20/25
302 27 0002 01	40/50/63

**VORTEX FLOW METER**



AIRpipe	DN mm
302 82 0100 02	20
302 82 0200 02	25
302 82 0400 02	40
302 82 0500 02	50

\*Union connectors included

302 82 0600 01	63
302 82 0700 01	80
302 82 0800 01	100
302 82 1000 01	150
302 82 1100 01	200

\*Needs two flange pipe connectors.

Type above: No output, built-in LCD Display with 3.6V Li-battery. For remote connection, please contact your sales.

**THREADED ADAPTORS ALUMINIUM**



Male-Male Threaded

AIRpipe	BSP	BSP
301 31 0000 01	1/2"	1/2"
301 31 0100 01	3/4"	3/4"
301 31 0200 01	1"	1"
301 31 0400 01	1 1/2"	1 1/2"
301 31 0500 01	2"	2"

Male-Female Threaded



AIRpipe	BSP	BSP
301 31 0400 02	1 1/2"	1"
301 31 0500 02	2"	1"
301 31 0500 03	2"	1 1/2"
301 31 0600 01	2 1/2"	1"
301 31 0600 02	2 1/2"	2"
301 31 0700 01	3"	1"
301 31 0700 02	3"	1 1/2"
301 31 0700 03	3"	2"
301 31 0700 04	3"	2 1/2"
302 31 0000 04	1/2"	1/2"
302 31 0000 03	1/2"	3/8"
302 31 0100 03	3/4"	1/2"
302 31 0200 03	1"	1/2"

Male-Male Threaded

AIRpipe	BSP	BSP
302 31 0000 02	1/2"	1/4"
302 31 0100 02	3/4"	1/2"
302 31 0200 02	1"	3/4"

**PRESSURE GAUGE**



AIRpipe	BSP
301 34 0001 02	Male 1/2", 0-16 bar

**TOOL BOX**



AIRpipe	Dimensions
301 45 0001 02	460x330x140mm

\* Items supplied in airpipe tool bag.

**DRILL**



AIRpipe	HOLDER	DN mm
301 35 0006 06	301 35 0005 01	16MM
301 35 0006 07	301 35 0005 01	22MM
301 35 0006 03	301 35 0005 01	25MM
301 35 0006 04	301 35 0005 02	38MM
301 35 0006 05	301 35 0005 02	51MM

**DRILL HOLDER**



AIRpipe	DN mm
301 35 0005 01	14-30
301 35 0005 02	32-152

**MARKER**



AIRpipe	Item
120 44 0005 02	

**HOLE DEBURRER**



AIRpipe	DN mm
301 35 0004 01	20-200

**ALUMINUM PIPE DEBURRER**



AIRpipe	DN mm
301 35 0003 01	20-50

**ALUMINUM PIPE CUTTER**



AIRpipe	DN mm	Description
301 35 0002 02		Aluminum pipe cutter, 20-63
301 35 0002 03		Aluminum pipe cutter, 40-100
301 35 0002 04		Blade for 20-63 pipe cutter
301 35 0002 05		Blade for 40-100 pipe cutter

**ELECTRIC PIPE CUTTER**



AIRpipe	DN mm
301 35 0001 01	63-200

**LUGGING MACHINE**



AIRpipe	DN mm	Description
302 44 0001 01		Charge type and hand held hydraulic machine, for 63-200*
302 44 0001 02		Machine only
120 44 0004 09		Jaws only

\* Comes With All Jaw Sets.

**FIXING BOLTS**



AIRpipe	DN mm
301 33 0004 01	M8*50
301 33 0004 02	M8*60
301 33 0004 03	M8*70

**ADJUSTABLE BRACKET**



Complete With Wall Expansion Bolts

AIRpipe	Length (MM)	to suit
301 32 0004 01	1200-2400	Threaded
301 32 0005 01	1200-2400	Flange

**GIRDER CLAMP**



AIRpipe	Item
301 33 0003 01	M8

**PIPE BENDING TOOL**



AIRpipe	DN mm
301 47 0001 01	20
301 47 0002 01	25

\*Bending Angle: MAX.90°

**M8 STUDDING**



AIRpipe	Length (MM)
301 33 0006 01	40
301 33 0005 01	3000

**WALL MOUNTED BRACKET**



Complete With Wall Expansion Bolts

AIRpipe	Length (MM)
301 32 0000 01	300
301 32 0001 01	500
301 32 0002 01	1200
301 32 0006 01	Suit to 150mm pipe

**SAMPLE BOX**



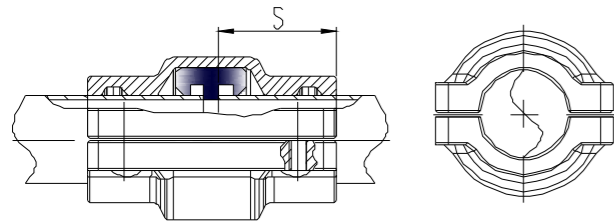
AIRpipe	Dimensions
302 46 0002 03	510x420x140mm

# Superior Reliability!

## Quick and Easy Installation



### Insertion Depth S For DN20-DN50 Connector



DN	Insertion depth S (mm)
20	29
25	29
40	39
50	39

- The size S is the length inserting the pipe into the connector, it should be ensured during installation.

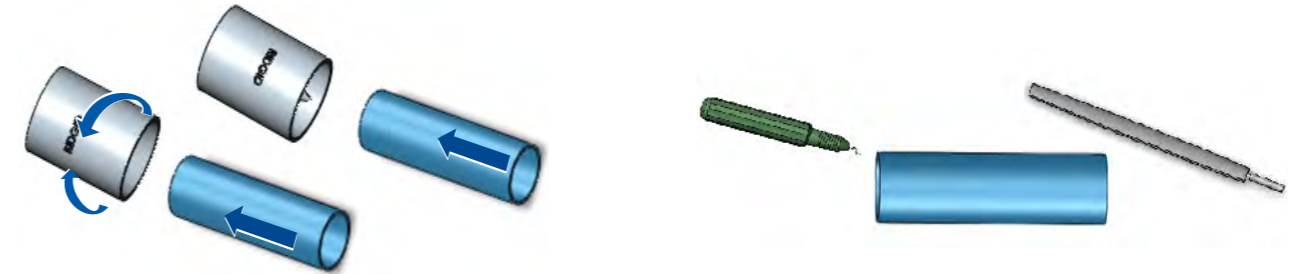
### Installation Guide for DN20-DN50

- 01** Mark the pipe with a marker pen.
- 02** Insert the marked pipe into the connector.
- 03** Bring the second pipe to the connector and slide up to the marked insertion depth.
- 04** Part of marking line should remain visible on both side of fitting after pipe is inserted into the connector.
- 05** Hand tighten the screws with an Allen key. Max. Torque: 8 N.m.
- 06** Tighten the screws in a "X" pattern on alternate sides of the clamp.

To disconnect, perform the same operations in reverse order.

### Deburr & Chamfer The Outer and Inner Edges Before Installation

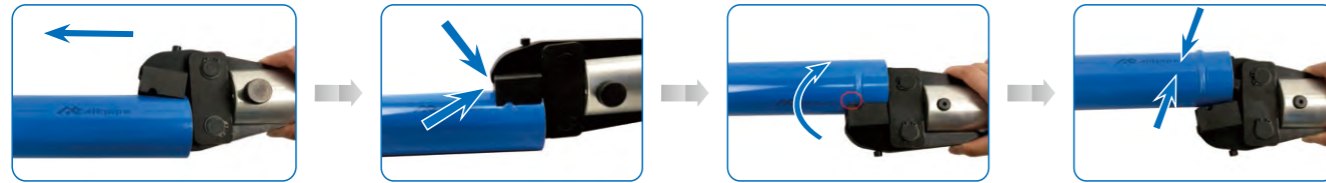
- Use 301 35 0002 03 for DN20-DN50 to chamfer the outer edges and also deburr the inner end.
- Use a file for DN63-DN200 to chamfer the outer edges; make use of a deburring tool to deburr the inside of the pipe end.



### Installation Guide for DN63-DN200

- 01** Slide the sealing element over the end of the first pipe up to the edge of lug.
- 02** Insert the second pipe into the sealing element up to the edge of lug.
- 03** Position the clamp over the sealing element.
- 04** Tighten the pre-fitted screws by hand at first.
- 05** Pull the pipe fully back towards the outside of the clamp to complete alignment.
- 06** Fully tighten the clamp screws. Min Torque: 10 Nm, Max Torque: 44.5 Nm makes the clamp closed fully.
- 07** For effective clamp sealing, screw tightening should be performed on alternate sides of the clamp. To disconnect, perform the same operations in reverse order.

**Hand-Held hydraulic lugging machine operation requirements :**



Manually open the jaws of the clamp and insert the aluminum pipe into the clamp as far as possible.

Release the jaws. Press the trigger and crimp the pipe until a "snap" sound is heard.

Re open the two jaws to remove the pipe and rotate pipe slightly. Put the jaw side to the mark position.

Renew the operation until the required minimum number of lugs for each diameter is finished.

**Number of lugs for each diameter:**

AIRPIPE	DN63	DN80	DN100	DN150	DN200
	5	6	6	9	12

Note: Do not overlap the lugs!

DN	H(mm)
63	3.0-3.3
80	3.0-3.3
100	3.0-3.3
150	3.0-3.3
200	3.0-3.3



- The following table is based on a closed-loop pipe system.
- Working pressure is 8bar and pressure drop is 0.4bar, flow speed not taken into account.

Flow N m3/h	Length									
	50M	100M	150M	300M	500M	750M	1000M	1300M	1600M	2000M
10	20	20	20	20	20	20	20	25	25	25
30	20	20	20	25	25	25	25	25	25	40
50	20	25	25	25	25	25	40	40	40	40
70	25	25	25	25	40	40	40	40	40	40
100	25	25	25	40	40	40	40	40	40	50
150	25	40	40	40	40	40	40	50	50	50
250	40	40	40	40	50	50	50	50	50	50
350	40	40	40	50	50	50	63	63	63	63
500	40	40	50	50	63	63	63	63	63	63
750	40	50	50	50	63	63	63	80	80	80
1000	50	50	63	63	63	80	80	100	100	100
1250	50	50	63	63	63	100	100	100	100	100
1500	50	63	63	80	80	100	100	100	100	100
1750	63	63	80	80	80	100	100	100	100	150
2000	63	80	80	80	100	100	100	100	150	150
2500	63	80	80	80	100	100	100	150	150	150
3000	80	80	80	100	100	150	150	150	150	150
3500	80	80	100	100	150	150	150	150	150	150
4000	80	100	100	100	150	150	150	150	150	150
4500	80	100	100	150	150	150	150	150	150	150
5000	80	100	100	150	150	150	150	150	150	150
5500	100	100	100	150	150	150	150	150	150	150
6000	100	100	150	150	150	150	150	150	150	150
6500	150	150	150	150	150	150	150	150	150	200
7200	150	150	150	150	150	150	150	200	200	200
8000	200	200	200	200	200	200	200	200	200	200
8500	200	200	200	200	200	200	200	200	200	200
10000	200	200	200	200	200	200	200	200	200	200
12000	200	200	200	200	200	200	200	200*	200*	200*

**Technical Specifications**

- Max. working pressure: 15bar (-20°C ~ +80°C)  
Max. working pressure for DN200 is 13bar.
- Vacuum: 1 mbar (absolute pressure).
- Suitable fluids: compressed air, oil-free or lubricated, wet, vacuum, inert gases.
- Fireproof and suitable for outdoor applications.

**Qualification & Standards**

2014/68/EU, ASME B31.1, TUV, GB/T4437.1-2000, EN755-8, TS, U194, ISO 8573-1



**Engineered for Superior Performance**

- We are committed to provide superior products and service.
- R&D is a continuous process linked to real-world conditions & market feedback.
- Always customer oriented, from design production to sales and service.

we are at your **SERVICE**

