

Flow, check-choke, throttle valves

Throttle non-return valve

Rexroth
Bosch Group



Technical Data

Type		Cone choke
Working pressure	p max.	10 bar (145 psi)
opening pressure (non-return valve)		>0,5 bar (> 7 psi)
Nominal flow rate	Qn	See table
at 6 bar (87 psi), Δp = 1 bar (15 psi)		0 °C to +70 °C (+32 °F to +158 °F)
Ambient temperature range		Compressed air, lubricated or non-lubricated
Medium		See table
Weight		
Materials	Valve Banjo elbow	Brass, nickel plated Plastic *) Metal

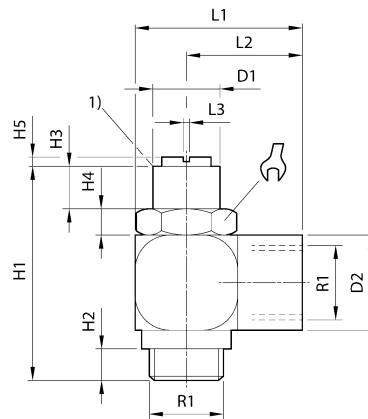


Part no.

	Choke	Port R1	Throttle bore	Qn [l/min] (Cv) backflow direction	Weight [kg] (lbs)	Part no.
	1 --> 2	M5 *)	1,5	85 (0.085)	0,010 (0.022)	0821200203
		M5	1,5	85 (0.085)	0,012 (0.012)	R412004833
		G 1/8	3,0	360 (0.36)	0,025 (0.055)	0821200204
		G 1/4	4,5	540 (0.54)	0,055 (0.121)	0821200205
		G 3/8	6,5	900 (0.9)	0,095 (0.209)	0821200206
		G 1/2	12	1960 (1.96)	0,185 (0.408)	0821200207
	2 --> 1	M5 *)	1,5	85 (0.085)	0,010 (0.022)	0821200200
		M5	1,5	85 (0.085)	0,012 (0.012)	R412004836
		G1/8	3,0	360 (0.36)	0,025 (0.055)	0821200201
		G1/4	4,5	540 (0.54)	0,055 (0.121)	0821200202

*) banjo elbow in plastic

Fig. 1



00109102

1) Valve body with ID mark for inlet throttling

R1	NG	D1	D2	H1	H2	H3	H4	H5	L1	L2	L3	SW
M5	2,5	7	8,4	20	3,5	4,5	2,5	1	14,5	10	0,8	8
G 1/8	4	10	15	31	6,5	3	4	1	21,5	12,5	1	13
G 1/4	6	-	20	36	8	-	4	1,2	29,5	17,5	1,5	16
G 3/8	8	16	21,5	49	7	10	6	2	38	26	1,5	21
G 1/2	12	22	28	73	10,5	6	7,5	1	49	34	2	27

NG = valve size