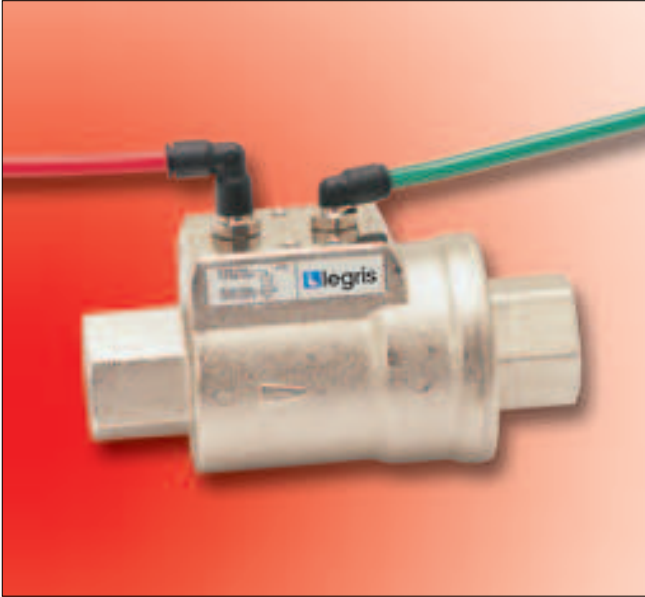


Principle of the Axial valve



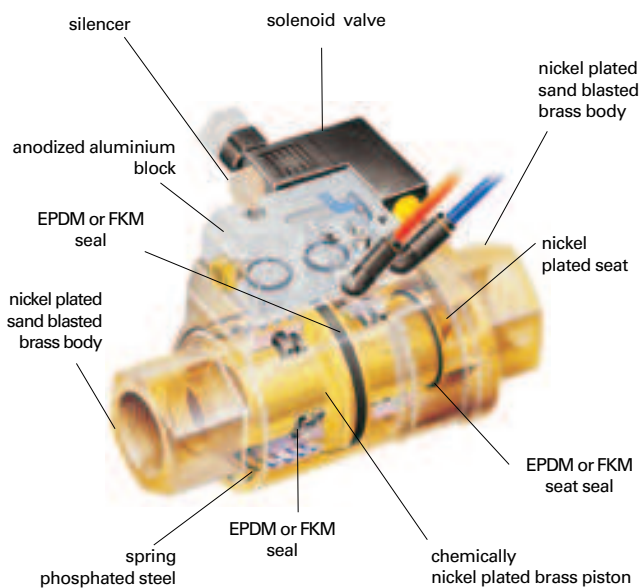
Designed with a view to overcoming the limitations of traditional actuators, the **Legris axial valve** offers the functions of a valve fitted with an actuator. A pneumatic automation device is fitted directly into the valve.

Its operation is not affected by the up/downstream pressures of the transported fluids, which guarantees the user total safety and a vastly simplified choice.

Principal advantages:

- **compactness:** the axial valve is extremely compact and requires up to 50% **less space** than an actuated valve.
- **costs less** than an actuated valve: a single unit which controls the following two functions at the same time opening/closing of circuit and actuation of this function.
- **high performance:** full flow, compatible with numerous industrial fluids
- straightforward reliable installation: **ready to fit.**

technical specifications

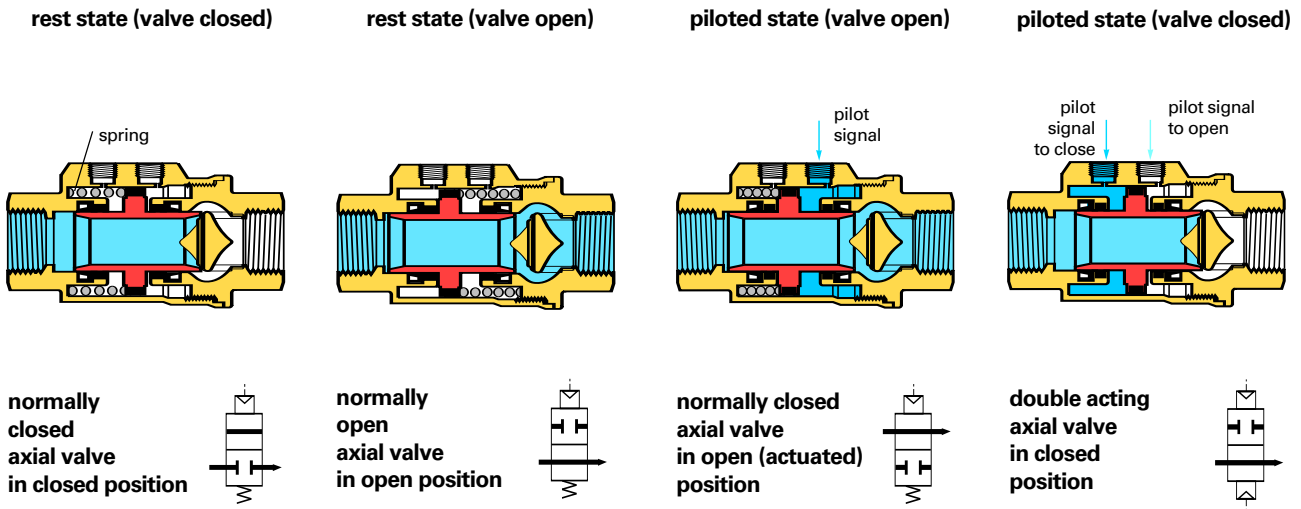


transported fluid	- all fluids compatible with : ● FKM : water, air, oils, greases... ● EPDM : hot water, air, steam...
maximum working pressure	10 bar
maximum temperature	with FKM seal + 135° C with EPDM seal + 120° C
minimum temperature	- 20°C
vacuum capability	740 mm Hg (97,4% vacuum).
pilot fluid	filtered compressed air
pilot pressure	NC and NO : 4,2 to 8 bar double acting : 3 to 8 bar

axial valve

operation

Depending upon the operational requirement, air is passed into the actuation chamber, as shown below, in order to open or close the valve.



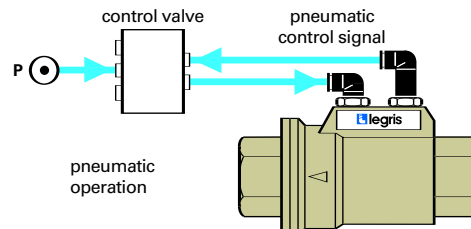
which control method ?

The **Legris** axial valve offers three different control methods dependant on the requirements of the installation:

pneumatic control

example : 4222 axial valve, double acting

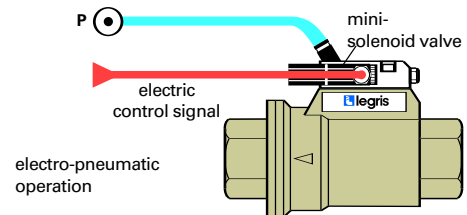
- on-site control.
- for **repetitive** on/off cycles.
- remote control in case of **difficulty of access** to a machine.



electro-pneumatic control

example :
4202 axial valve, normally closed
+ 4298 mini-solenoid valve and subbase

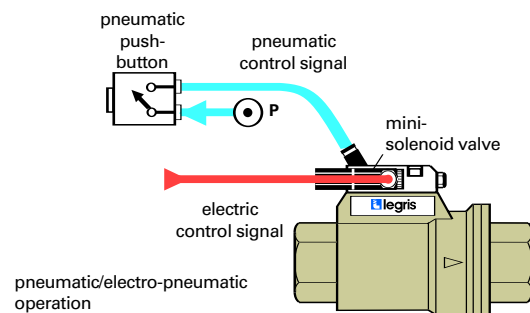
- for industrial automation requiring **remote control**.



pneumatic/electro-pneumatic dual control

example :
4212 axial valve, normally open
+ 4298 mini-solenoid valve and subbase
+ 4299 switch

- dual control structure
- for increased safety : prevents all localized operating errors.

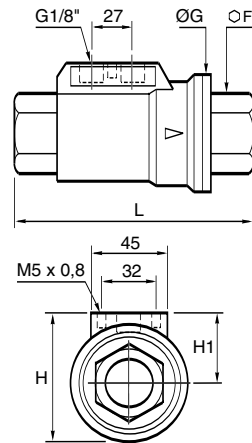


axial valve

4202 normally closed, double female, BSP parallel



sand blasted nickel plated brass body



C	DN	FKM seal	F	G	H	H1	L	kg
G3/8	10	4202 10 17 20	22	46	54	31	98	0,814
G1/2	15	4202 15 21 20	27	52	60	35	112	1,085
G3/4	20	4202 20 27 20	33	64	70	38	135	1,634
G1"	25	4202 25 34 20	41	69	76	41,5	143	2,024
G1"1/4	32	4202 32 42 20*	50	86	91	48	165	3,301
G1"1/2	40	4202 40 49 20*	60	96	102	54	180	4,180
G2"	50	4202 50 48 20*	75	109	115	60,5	207	6,360

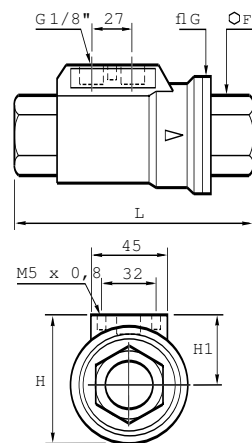
C	DN	EPDM seal	F	G	H	H1	L	kg
G3/8	10	4202 10 17 30	22	46	54	31	98	0,814
G1/2	15	4202 15 21 30	27	52	60	35	112	1,085
G3/4	20	4202 20 27 30	33	64	70	38	135	1,634
G1"	25	4202 25 34 30	41	69	76	41,5	143	2,024
G1"1/4	32	4202 32 42 30*	50	86	91	48	165	3,301
G1"1/2	40	4202 40 49 30*	60	96	102	54	180	4,180
G2"	50	4202 50 48 30*	75	109	115	60,5	207	6,360

Pilot port : 1/8" BSP parallel
Complete with M5 silencer

4212 normally open, double female, BSP parallel



sand blasted nickel plated brass body



C	DN	FKM seal	F	G	H	H1	L	kg
G3/8	10	4212 10 17 20	22	46	54	31	98	0,814
G1/2	15	4212 15 21 20	27	52	60	35	112	1,085
G3/4	20	4212 20 27 20	33	64	70	38	135	1,634
G1"	25	4212 25 34 20	41	69	76	41,5	143	2,024
G1"1/4	32	4212 32 42 20*	50	86	91	48	165	3,301
G1"1/2	40	4212 40 49 20*	60	96	102	54	180	4,180
G2"	50	4212 50 48 20*	75	109	115	60,5	207	6,360

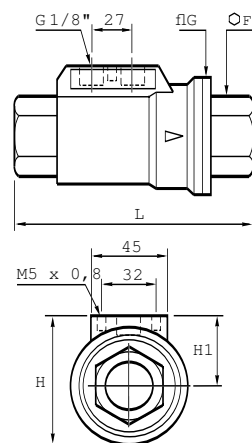
C	DN	EPDM seal	F	G	H	H1	L	kg
G3/8	10	4212 10 17 30	22	46	54	31	98	0,814
G1/2	15	4212 15 21 30	27	52	60	35	112	1,085
G3/4	20	4212 20 27 30	33	64	70	38	135	1,634
G1"	25	4212 25 34 30	41	69	76	41,5	143	2,024
G1"1/4	32	4212 32 42 30*	50	86	91	48	165	3,301
G1"1/2	40	4212 40 49 30*	60	96	102	54	180	4,180
G2"	50	4212 50 48 30*	75	109	115	60,5	207	6,360

Pilot port : 1/8" BSP parallel
Complete with M5 silencer

4222 double acting, double female, BSP parallel



sand blasted nickel plated brass body



C	DN	FKM seal	F	G	H	H1	L	kg
G3/8	10	4222 10 17 20	22	46	54	31	98	0,814
G1/2	15	4222 15 21 20	27	52	60	35	112	1,085
G3/4	20	4222 20 27 20	33	64	70	38	135	1,634
G1"	25	4222 25 34 20	41	69	76	41,5	143	2,024
G1"1/4	32	4222 32 42 20*	50	86	91	48	165	3,301
G1"1/2	40	4222 40 49 20*	60	96	102	54	180	4,180
G2"	50	4222 50 48 20*	75	109	115	60,5	207	6,360

C	DN	EPDM seal	F	G	H	H1	L	kg
G3/8	10	4222 10 17 30	22	46	54	31	98	0,814
G1/2	15	4222 15 21 30	27	52	60	35	112	1,085
G3/4	20	4222 20 27 30	33	64	70	38	135	1,634
G1"	25	4222 25 34 30	41	69	76	41,5	143	2,024
G1"1/4	32	4222 32 42 30*	50	86	91	48	165	3,301
G1"1/2	40	4222 40 49 30*	60	96	102	54	180	4,180
G2"	50	4222 50 48 30*	75	109	115	60,5	207	6,360

Pilot port : 1/8" BSP parallel

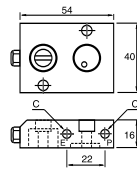
Face plate in accordance with recommendations in force (NAMUR). *Models with CE marking

axial valve

4298 subbase for solenoid pilot valve



anodized aluminium

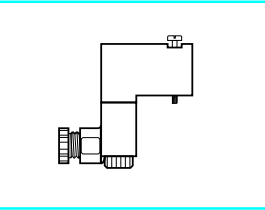


C		
M5x0,8	4298 00 01	0,094

The subbase is fitted directly to the axial valve and permits the mounting of a 15x15 solenoid valve.

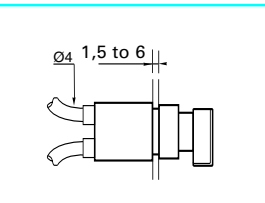
Supplied with 2 fixing bolts, silencer and seals

4298 mini-solenoid valve 1W/1,2VA

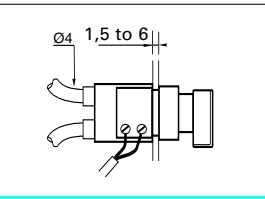


voltage	
24V ---	4298 01 01
24V ~	4298 01 02
110V ~	4298 02 01
220V ~	4298 02 02

4299 pneumatic button/electro-pneumatic

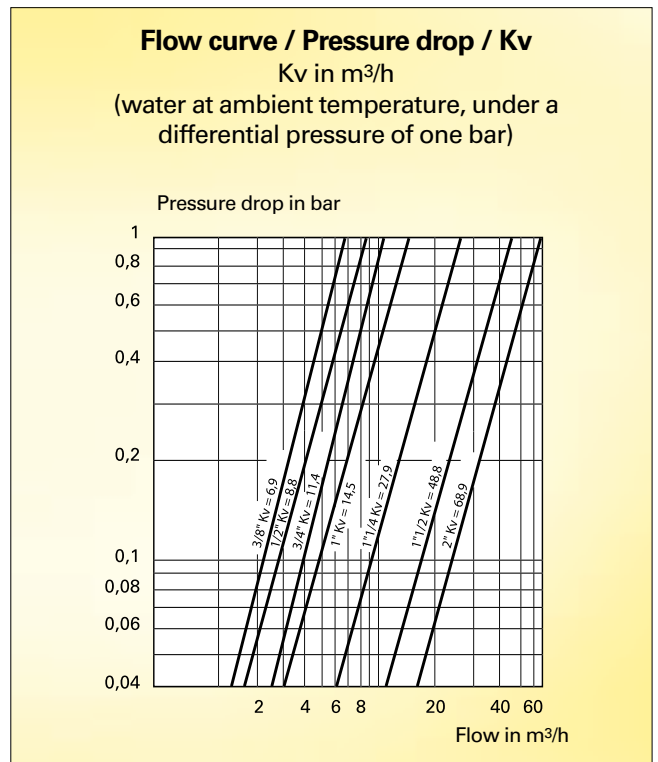


1 pneumatic contact	
standard	4299 01 01
with key	4299 01 02



1 electro-pneumatic contact	
standard	4299 02 01
with key	4299 02 02

Bulkhead fixing hole diameter : 22 mm



Upon special request, we can supply

- replacement seal kits (all types i.e. FKM, EPDM, Nitrile)
- axial valves equipped with magnetic sensors to indicate their state (open and/or closed)
- chemically nickel-plated axial valves

Please, do not hesitate to consult us.