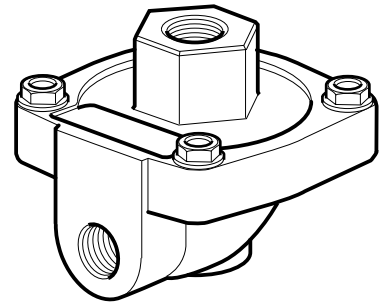


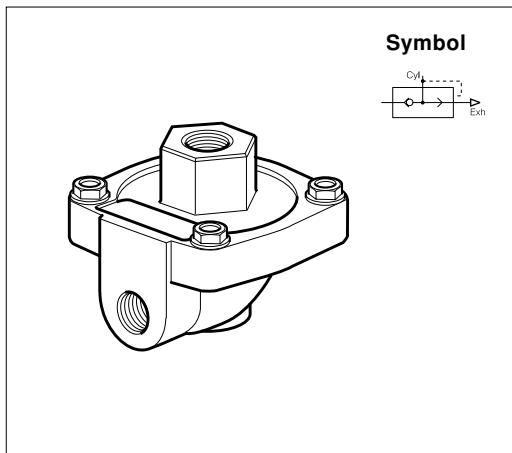
- Increases piston speeds, super sensitive diaphragm
- Extremely low operating differential
- Virtually stiction free
- May be used as differential shuttle valve
- High temperature option



Operating information

Operating pressure: 0,2 to 10 bar
 Operating temperature (Standard): -10°C to +80°C
 Operating temperature (High): -10°C to +180°C
 Body material: Aluminium
 Diaphragm material (Standard): Nitrile
 Diaphragm material (High): Viton

Standard version

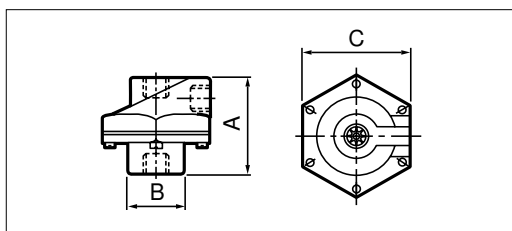


| Port Size | Cv Rating | Weight kg | Order Code |
|-----------|-----------|-----------|-----------------|
| G1/4 | 2,3 | 0,20 | P4Q-BA12 |
| G3/8 | 3,6 | 0,18 | P4Q-BA13 |
| G1/2 | 6,6 | 0,50 | P4Q-CA14 |
| G3/4 | 7,3 | 0,44 | P4Q-CA16 |

High temperature version

| Port Size | Cv Rating | Weight kg | Order Code |
|-----------|-----------|-----------|-----------------|
| G1/4 | 2,3 | 0,20 | P4Q-BV12 |
| G3/8 | 3,6 | 0,18 | P4Q-BV13 |
| G1/2 | 6,6 | 0,50 | P4Q-CV14 |
| G3/4 | 7,3 | 0,44 | P4Q-CV16 |

Quick Exhaust Valves - Dimensions



| Order code | Port Size | A | B | C |
|-----------------|-----------|----|----|----|
| P4Q-B*12 | G1/4 | 52 | 25 | 62 |
| P4Q-B*13 | G3/8 | 52 | 25 | 62 |
| P4Q-B*14 | G1/2 | 73 | 38 | 86 |
| P4Q-B*16 | G3/4 | 73 | 38 | 86 |