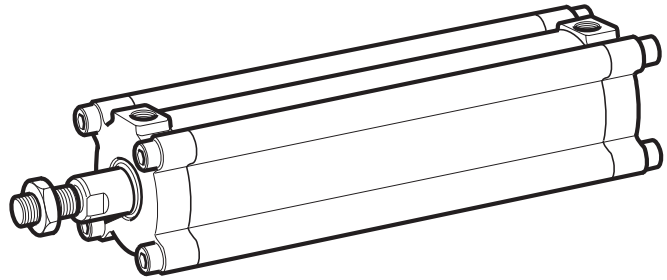


- Cylinders for light-duty operation
- Compact and clean design for washdown applications
- Designed for operation with dry piston rod
- Profile cylinders available in 32 to 125 mm bores
- End stroke buffers for long service life



For detailed information see technical leaflet 9127002192
Spare parts list 0023-38

Operating and additional information

Working pressure Max 10 bar
Working temperature -20 °C to +70 °C

Prelubricated, further lubrication is not normally necessary.
If additional lubrication is introduced it must be continued.

On request:


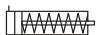

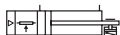
Cylinders with stainless steel piston rod
Cylinders with through piston rod
Cylinders for high ambient temperatures
Cylinders for low pressure hydraulics
Cylinders for low ambient temperatures

Cylinders with rod lock device, see page 1-39
Cylinders with position sensor, see page 1-38
Cylinders with mounted valve, see page 1-38

Order key

P1K - S		032	D	T	-	0100																																	
<table border="1"> <thead> <tr> <th colspan="2">Cylinder type</th> </tr> </thead> <tbody> <tr> <td>S</td> <td>Double acting</td> </tr> <tr> <td>L</td> <td>Piston rod lock device.</td> </tr> <tr> <td>W</td> <td>Position sensor. Not for single acting cyl.</td> </tr> <tr> <td>V</td> <td>Combination of L+W</td> </tr> <tr> <td>C</td> <td>Cylinder with factory fitted centre trunnion and connection ports located 90° from pivot point. Dimension G see page 1-42.</td> </tr> <tr> <td>A</td> <td>Combination of C+L</td> </tr> <tr> <td>K</td> <td>Combination of C+W</td> </tr> <tr> <td>J</td> <td>Combination of C+V</td> </tr> </tbody> </table>		Cylinder type		S	Double acting	L	Piston rod lock device.	W	Position sensor. Not for single acting cyl.	V	Combination of L+W	C	Cylinder with factory fitted centre trunnion and connection ports located 90° from pivot point. Dimension G see page 1-42.	A	Combination of C+L	K	Combination of C+W	J	Combination of C+V	<table border="1"> <thead> <tr> <th colspan="2">Cylinder bore mm</th> </tr> </thead> <tbody> <tr><td>032</td></tr> <tr><td>040</td></tr> <tr><td>050</td></tr> <tr><td>063</td></tr> <tr><td>080</td></tr> <tr><td>100</td></tr> <tr><td>125</td></tr> </tbody> </table>	Cylinder bore mm		032	040	050	063	080	100	125				<table border="1"> <thead> <tr> <th colspan="2">Stroke (mm)</th> </tr> </thead> <tbody> <tr> <td colspan="2">E.G. 0025 = 25 mm</td> </tr> <tr> <td colspan="2">For standard stroke length and max length see table page 1-38.</td> </tr> </tbody> </table>	Stroke (mm)		E.G. 0025 = 25 mm		For standard stroke length and max length see table page 1-38.	
Cylinder type																																							
S	Double acting																																						
L	Piston rod lock device.																																						
W	Position sensor. Not for single acting cyl.																																						
V	Combination of L+W																																						
C	Cylinder with factory fitted centre trunnion and connection ports located 90° from pivot point. Dimension G see page 1-42.																																						
A	Combination of C+L																																						
K	Combination of C+W																																						
J	Combination of C+V																																						
Cylinder bore mm																																							
032																																							
040																																							
050																																							
063																																							
080																																							
100																																							
125																																							
Stroke (mm)																																							
E.G. 0025 = 25 mm																																							
For standard stroke length and max length see table page 1-38.																																							
		<table border="1"> <thead> <tr> <th colspan="2">Cylinder type/function</th> </tr> </thead> <tbody> <tr><td>D</td><td>Double acting</td></tr> <tr><td>K</td><td>Double acting through rod</td></tr> <tr><td>S</td><td>Single acting spring return</td></tr> <tr><td>B</td><td>Pin screws and nuts in rear end cover</td></tr> <tr><td>A</td><td>End cover screws in stainless screws</td></tr> <tr><td>R</td><td>Piston rod with female thread</td></tr> </tbody> </table>		Cylinder type/function		D	Double acting	K	Double acting through rod	S	Single acting spring return	B	Pin screws and nuts in rear end cover	A	End cover screws in stainless screws	R	Piston rod with female thread	<table border="1"> <thead> <tr> <th colspan="2">Sealing material</th> </tr> </thead> <tbody> <tr> <td>T</td> <td>Standard -20°C to +80°C</td> </tr> <tr> <td>G</td> <td>High temperature -10°C to +150°C not for type L and W</td> </tr> <tr> <td>K</td> <td>Low temperature -40°C to +40°C not for type L and W</td> </tr> <tr> <td>J</td> <td>Low pressure hydraulic not for type L and W</td> </tr> </tbody> </table>		Sealing material		T	Standard -20°C to +80°C	G	High temperature -10°C to +150°C not for type L and W	K	Low temperature -40°C to +40°C not for type L and W	J	Low pressure hydraulic not for type L and W										
Cylinder type/function																																							
D	Double acting																																						
K	Double acting through rod																																						
S	Single acting spring return																																						
B	Pin screws and nuts in rear end cover																																						
A	End cover screws in stainless screws																																						
R	Piston rod with female thread																																						
Sealing material																																							
T	Standard -20°C to +80°C																																						
G	High temperature -10°C to +150°C not for type L and W																																						
K	Low temperature -40°C to +40°C not for type L and W																																						
J	Low pressure hydraulic not for type L and W																																						

Standard stroke lengths

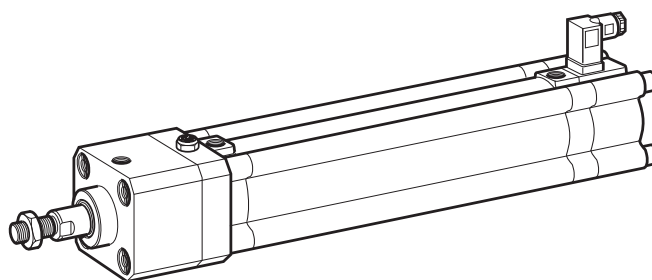
Order code	Cylinder bore mm	● Standard stroke lengths in mm										■ Non standard stroke					
		25	50	80	100	125	160	200	250	320	400	500					
Double acting 																	
P1K-S032DT-S*	32	●	●	●	●	●	●	●	●	●	●	●	■				
P1K-S040DT-S*	40	●	●	●	●	●	●	●	●	●	●	●	■				
P1K-S050DT-S*	50	●	●	●	●	●	●	●	●	●	●	●	■				
P1K-S063DT-S*	63	●	●	●	●	●	●	●	●	●	●	●	■				
P1K-S080DT-S*	80	●	●	●	●	●	●	●	●	●	●	●	■				
P1K-S100DT-S*	100	●	●	●	●	●	●	●	●	●	●	●	■				
P1K-S125DT-S*	125	●	●	●	●	●	●	●	●	●	●	●	■				
Single acting, push type 																	
P1K-S032ST-S*	32	●	●										■				
P1K-S040ST-S*	40	●	●										■				
P1K-S050ST-S*	50	●	●										■				
P1K-S063ST-S*	63	●	●										■				
P1K-S080ST-S*	80	●	●										■				
P1K-S100ST-S*	100	●	●										■				
P1K-S125ST-S*	125	●	●										■				
Double acting, positioning 																	
P1K-W040DT-S*	40				●			●			●		■				
P1K-W050DT-S*	50				●			●			●		■				
P1K-W063DT-S*	63				●			●			●		■				
Double acting, positioning, rod lock 																	
P1K-V040DT-S*	40				●			●			●		■				
P1K-V050DT-S*	50				●			●			●		■				
P1K-V063DT-S*	63				●			●			●		■				

*S = Stroke

Cylinder with position sensor

- Can be stopped at any position along entire stroke. Speed up to 1 m/s
- Absolute position transmitter ensures reliable position repeatability

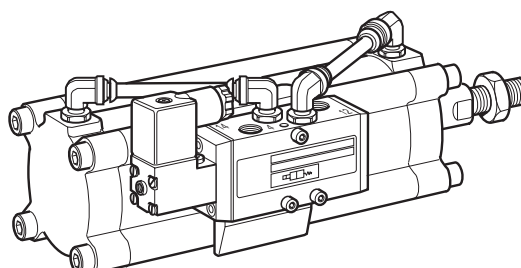
See technical leaflet 9127002192



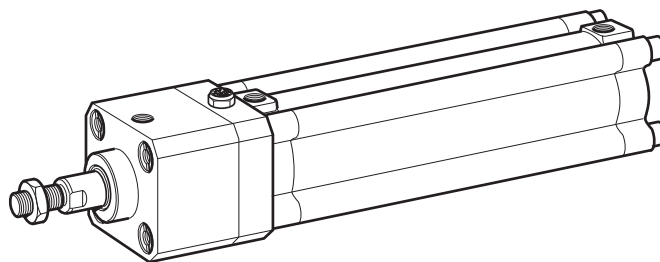
Cylinder with factory fitted valve

- P1K cylinder and valve mounted in a compact design ensuring quick operation
- Available on bore sizes 32 to 80 mm

See technical leaflet 9127002192



- Mechanical piston rod locking function
- The locking device is operated by pressure release
- A separate valve with quick exhaust is used for on/off control of the lock unit



For detailed information see technical leaflet 9127002192

Operating information

Working medium:	Dry, filtered compressed air
Working pressure:	Max 10 bar
Working temperature:	-20 to +80 °C
Release pressure:	Min 4 bar ± 10%

* Signal pressure to connection port on locking unit.


Options and additional information

Non standard stroke available, max 2700 mm
Other data as for the basic cylinder

Note!

The piston rod should not be moving when the locking device operates. It is not intended to brake movement in a repeated sequence.

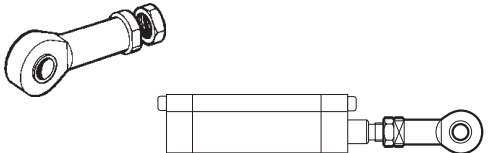
Main data for Rod lock device, P1KL

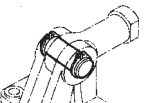
Symbol	Cyl. bore mm	Rod thread mm	Port size	Order code	D
	32	12/M10x1,25	G1/8	P1K-L032DT-XXXX*	2
	40	16/M12x1,25	G1/8	P1K-L040DT-XXXX*	2
	50	20/M16x1,5	G1/8	P1K-L050DT-XXXX*	2
	63	20/M16x1,5	G1/8	P1K-L063DT-XXXX*	2
	80	25/M20x1,5	G1/4	P1K-L080DT-XXXX*	2
	100	32/M20x1,5	G1/4	P1K-L100DT-XXXX*	2

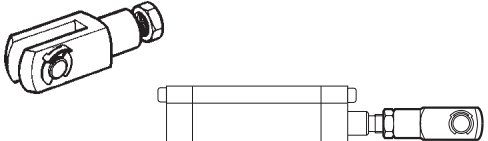
* XXXX = Stroke

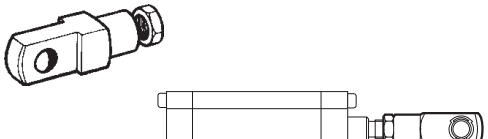
For detailed information see technical leaflet 9127002192

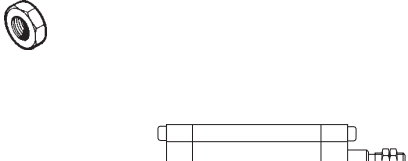
Piston rod mountings

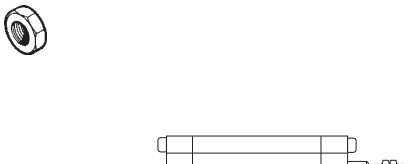
Type	Material	Cyl. bore mm	Pin mm	Thread	Weight Kg	Order code	D
Swivel rod eye ISO 8139 	Zinc plated steel	32	10	M10x1,25	0,08	P1C-4KRS	1
		40	12	M12x1,25	0,12	P1C-4LRS	1
		50	16	M16x1,5	0,25	P1C-4MRS	1
		63	16	M16x1,5	0,25	P1C-4MRS	1
		80	20	M20x1,5	0,46	P1C-4PRS	1
		100	20	M20x1,5	0,46	P1C-4PRS	1
		125	30	M27x2	1,28	P1C-4RRS	1

Pin for Pivot bracket + Swivel rod eye 	Hardened steel	32	10		0,02	9126 3426-07	1
	Note! Pin only, bracket and rod eye to be ordered separately	40	12		0,04	9126 3426-03	1
		50	16		0,02	9126 3426-08	1
		63	16		0,02	9126 3426-08	1
		80	20		0,17	9126 3426-09	1
		100	20		0,17	9126 3426-09	1

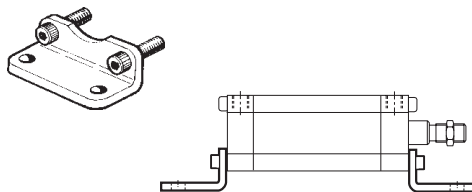
Clevis ISO 8140 	Zinc plated steel	32	10	M10x1,25	0,10	P1C-4KRC	1
		40	12	M12x1,25	0,16	P1C-4LRC	1
		50	16	M16x1,5	0,35	P1C-4MRC	1
		63	16	M16x1,5	0,35	P1C-4MRC	1
		80	20	M20x1,5	0,75	P1C-4PRC	1
		100	20	M20x1,5	0,75	P1C-4PRC	1
		125	30	M27x2	2,10	P1C-4RRC	1

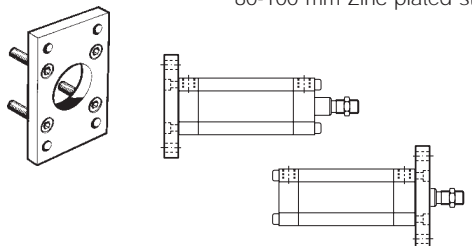
Rod eye 	Zinc plated steel	32	10	M10x1,25	0,09	9121 6470-01	1
		40	12	M12x1,25	0,14	9121 6470-02	1
		50	16	M16x1,5	0,34	9121 6470-03	1
		63	16	M16x1,5	0,34	9121 6470-03	1
		80	20	M20x1,5	0,67	9121 6470-05	1
		100	20	M20x1,5	0,67	9121 6470-05	1

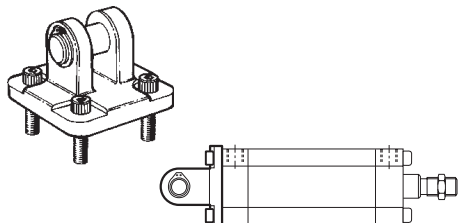
Piston rod nut 	Zinc plated steel	32		M10x1,25	0,01	9128 9856-01	1
		40		M12x1,25	0,01	0261 1099-10	1
		50		M16x1,5	0,02	9128 9856-03	1
		63		M16x1,5	0,02	9128 9856-03	1
		80		M20x1,5	0,03	0261 1099-11	1
		100		M20x1,5	0,03	0261 1099-11	1
		125		M27x2	0,10	0261 1099-12	1

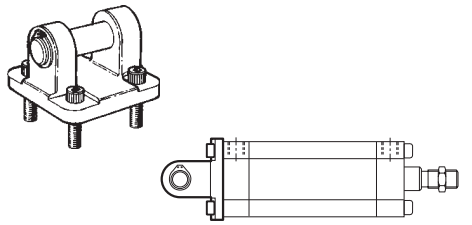
Piston rod nut 	Stainless steel	32		M10x1,25	0,01	9128 7254-04	1
		40		M12x1,25	0,01	9128 7254-05	1
		50		M16x1,5	0,02	9128 7254-06	1
		63		M16x1,5	0,02	9128 7254-06	1
		80		M20x1,5	0,03	0261 1099-21	1
		100		M20x1,5	0,03	0261 1099-21	1
		125		M27x2	0,10	0261 1099-22	1

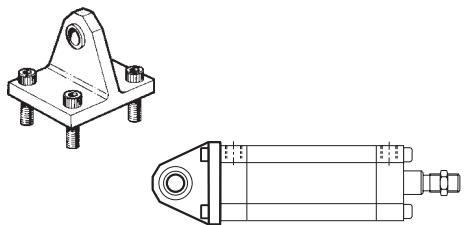
Cylinder mountings

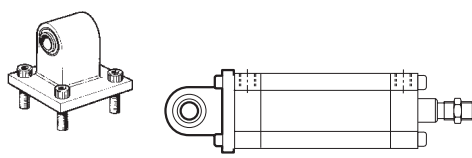
Type	Material	Cyl. bore mm	Pin mm	Weight Kg	Order code	D
Foot bracket MS1 	Zinc plated steel	32		0,08	9121 6448-01	1
		40		0,11	9121 6448-02	1
		50		0,18	9121 6448-03	1
		63		0,26	9121 6448-04	1
		80		0,50	9121 6448-05	1
		100		0,80	9121 6448-06	1
		125		1,40	9121 6448-07	1

Type	Material	Cyl. bore mm	Pin mm	Weight Kg	Order code	D
Flange MF1 and MF2 	32-63 mm Anodised aluminium 80-100 mm Zinc plated steel	32		0,26	9121 6449-01	1
	40		0,37	9121 6449-02	1	
	50		0,52	9121 6449-03	1	
	63		0,90	9121 6449-04	1	
	80		1,59	9121 6449-05	1	
	100		2,19	9121 6449-06	1	
	125		3,90	9121 6449-07	1	

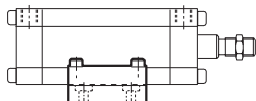
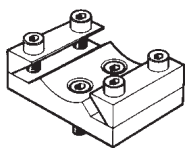
Type	Material	Cyl. bore mm	Pin mm	Weight Kg	Order code	D
Clevis bracket MP4 	Anodised aluminium	32	10	0,05	9121 6446-01	1
		40	12	0,13	9121 6446-02	1
		50	12	0,18	9121 6446-03	1
		63	16	0,34	9121 6446-04	1
		80	16	0,57	9121 6446-05	1
		100	20	0,91	9121 6446-06	1
		125	25	2,90	9121 6446-07	1

Type	Material	Cyl. bore mm	Pin mm	Weight Kg	Order code	D
Clevis bracket MP2 	Anodised aluminium	32	10	0,13	9121 6447-01	1
		40	12	0,19	9121 6447-02	1
		50	12	0,22	9121 6447-03	1
		63	16	0,40	9121 6447-04	1
		80	16	0,65	9121 6447-05	1
		100	20	1,09	9121 6447-06	1
		125	25	3,60	9121 6447-07	1

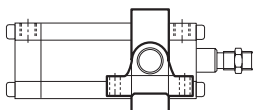
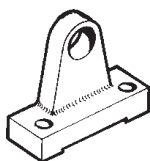
Type	Material	Cyl. bore mm	Pin mm	Weight Kg	Order code	D
Swivel eye bracket 	Anodised aluminium	32	10	0,08	9121 5686-01	1
		40	12	0,12	9121 5686-02	1
		50	12	0,17	9121 5686-03	1
		63	16	0,30	9121 5686-04	1
		80	16	0,49	9121 5686-05	1
		100	20	0,73	9121 5686-06	1
		125	25	2,40	9121 5686-07	1

Type	Material	Cyl. bore mm	Pin mm	Weight Kg	Order code	D
Bracket with rubber bushing 	Anodised aluminium	40	12	0,14	9121 6588-02	1
		50	12	0,18	9121 6588-03	1
		63	16	0,41	9121 6588-04	1

Type	Material	Cyl. bore mm	Pin mm	Weight Kg	Order code	D
Adjustable barrel bracket	Zinc plated cast iron	32		0,29	9122 4005-01	1
		40		0,41	9122 4005-02	1
		50		0,74	9122 4005-03	1
		63		1,08	9122 4005-04	1

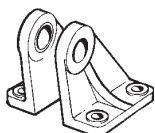


Bearing bracket for MT4	Zinc plated cast iron	32	12	0,06*	9121 5693-01	1
		40	16	0,12*	9121 5693-02	1
		50	16	0,24*	9121 5693-03	1
		63	20	0,44*	9121 5693-04	1
		80	20	0,66*	9121 5693-05	1
		100	25	2,20*	9121 5693-06	1
		125	25	2,20*	9121 5693-06	1



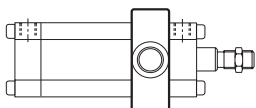
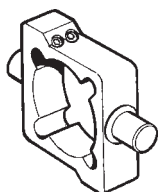
* Weight in pairs, supplied in pairs

Pivot bracket	Zinc plated cast iron	32	10	0,10*	9121 6584-01	1
		40	12	0,12*	9121 6584-02	1
		50	12	0,26*	9121 6584-03	1
		63	16	0,34*	9121 6584-04	1
		80	16	0,60*	9121 6584-05	1
		100	20	0,93*	9121 6584-06	1

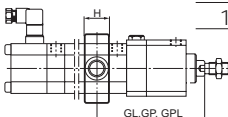
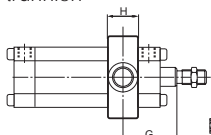


*Weight in pairs, supplied in pairs

Centre trunnion MT4 Trunnion only	Zinc plated cast iron	32	12	0,24	9123 9714-01	1
		40	16	0,39	9123 9714-02	1
		50	16	0,63	9123 9714-03	1
		63	20	0,90	9123 9714-04	1
		80	20	1,62	9123 9714-05	1
		100	25	2,37	9123 9714-06	1
		125	25	4,30	9123 9714-07	1



Type	Cyl. bore mm	Standard cylinder	Rod lock cylinder	Positioning cylinder	Rod lock Positioning cylinder	Order code	D
		G _{std} mm	G _{Lstd} mm	G _{Pstd} mm	G _{PLstd} mm		
Centre trunnion MT4 Complete, mounted trunnion	32	45	111			See pages 1-37	2
	40	48	116	48	116	See pages 1-37	2
	50	49	124	49	124	See pages 1-37	2
	63	54	146	54	146	See pages 1-37	2
	80	66	177			See pages 1-37	2
	100	71	203			See pages 1-37	2
	125	81				See pages 1-37	2



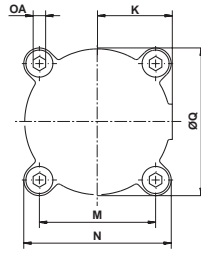
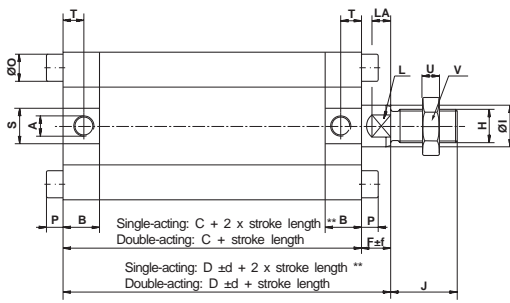
G±2 mm

Note! The centre trunnion is mounted on the cylinder barrel close to the front end cover according to a dimension determined at the factory, unless otherwise specified. After this, the position of the trunnion cannot be changed. If any other installation dimension is required or if the centre trunnion is required for separate delivery, this must be specified when ordering.

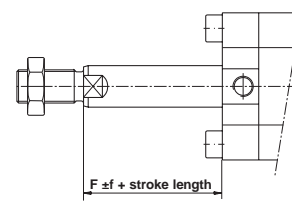
Can be combined with Bearing brackets or Pivot brackets.

Note! If a non-standard G dimension is required this must be specified when ordering.

Dimensions, basic cylinder



P1KU, through piston rod

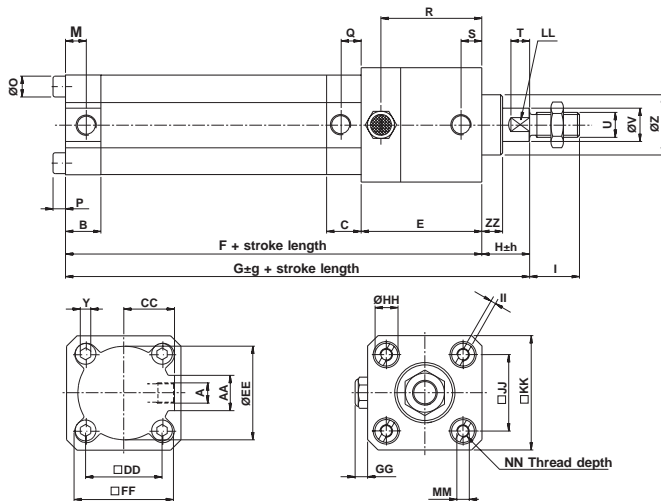


Cylinder bore	A	B	C	D	F	H	I	J	K	L	LA	M	N	O	OA
32	G1/8	17,0	65	75	10	M10x1,25	12	22	21,0	10	6	32,5	42,5	8,5	4
40	G1/8	17,0	65	78	13	M12x1,25	16	24	24,0	14	9	36,8	48,0	10,0	5
50	G1/8	17,5	71	85	14	M16x1,5	20	32	29,0	17	9	46,7	59,0	10,0	5
63	G1/8	17,5	72	86	14	M16x1,5	20	32	36,0	17	9	55,9	71,0	13,0	6
80	G1/4	21,5	85	101	16	M20x1,5	25	40	44,5	22	10	70,0	87,0	16,0	8
100	G1/4	21,5	87	108	21	M20x1,5	32	40	55,0	27	13	84,1	102,0	16,0	8
125	G3/8	25,5	94,5	115,5	21	M27x2	32	54	68,0	27	13	104,0	124,0	18,0	10

Cylinder bore	P	Q	S	T	U	V	Assembly tolerances		Stroke length tolerances 0-320 (at 6 bar)
							d	f	
32	5	37	17	10	5	17	0,9	1,2	+2,0
40	6	45	17	10	6	19	0,9	1,2	+2,0
50	6	56	17	10	8	24	0,9	1,2	+2,0
63	8	70	17	10	8	24	1,2	1,6	+2,5
80	10	87	21	12	10	30	1,2	1,6	+2,5
100	10	108	21	12	10	30	1,2	1,6	+2,5
125	12	134	25	14	13,5	41	1,2	1,6	+2,5

* S = stroke length ** Stroke length for bore sizes 32-63 = 25 and 50 mm, for bore sizes 80-100 = 50 mm.

Dimensions, cylinder with piston rod locking

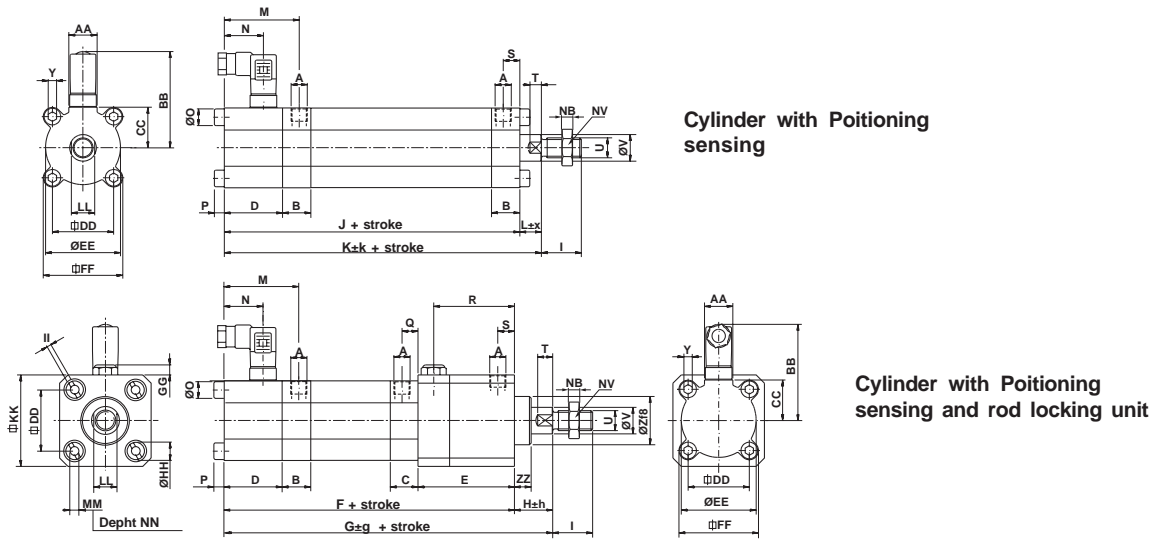


Cylinder bore	A	AA	B	C	CC	DD	E	EE	F	FF	G	GG	H	HH	I	II	JJ	KK
32	G1/8	17	17,0	16,6	21,0	32,5	55	37	119,5	42,5	140,5	6	21	8	22	2,0	32,5	50
40	G1/8	17	17,0	16,6	24,0	36,8	58	45	122,5	48,0	145,5	6	23	11	24	2,5	36,8	55
50	G1/8	17	17,5	17,1	29,0	46,7	63	56	133,5	59,0	159,5	6	26	11	32	2,5	46,7	65
63	G1/8	17	17,5	17,1	36,0	55,9	74	70	145,5	71,0	177,5	6	32	13	32	2,5	55,9	75
80	G1/4	21	21,5	21,0	44,5	70,0	96	87	180,5	87,0	211,5	6	31	17	40	3,0	70,0	95
100	G1/4	21	21,5	21,0	55,0	84,1	118	108	204,5	102,0	239,5	6	35	17	40	3,0	84,1	115

Cylinder bore	LL	M	MM	NN	O	P	Q	R	S	T	U	V	Y	Z	ZZ
32	10	10	M5	11,0	8,5	5	9,6	46,5	10	6	M10x1,25	12	4	24	11
40	14	10	M6	11,5	10	6	9,6	48,5	10	9	M12x1,25	16	5	29	10
50	17	10	M6	11,5	10	6	9,6	51,0	10	9	M16x1,5	20	5	36	12
63	17	10	M8	14,0	13	8	9,6	60,0	10	9	M16x1,5	20	6	37	18
80	22	12	M10	15,0	16	10	11,5	78,0	10	10	M20x1,5	25	8	46	15
100	27	12	M10	15,0	16	10	11,5	95,5	10	13	M20x1,5	32	8	56	14

Cylinder bore	Assembly tolerances		Stroke length tolerances 0-320 (6 bar)
	g	h	
32	0,9	1,2	+2,0
40	0,9	1,2	+2,0
50	0,9	1,2	+2,0
63	1,2	1,6	+2,5
80	1,2	1,6	+2,5
100,2	1,6		+2,5

Dimensions, cylinder with positioning sensing



Cylinder bore	A	B	C	D	E	F	G	H	I	J	K	L	M	N	O	P	Q	R
P1KP-40	G1/8	17,0		35					24	128,0	141,0	13	45	23,5	10	6		
P1KP-50	G1/8	17,5		35					32	139,5	153,5	14	45	23,5	10	6		
P1KP-63	G1/8	17,5		35					32	139,5	153,5	14	45	23,5	13	8		
P1KPL-40	G1/8	17,0	16,6	35	58	186,0	209,0	23	24				45	23,5	10	6	9,6	48,5
P1KPL-50	G1/8	17,5	17,1	35	63	202,5	228,5	26	32				45	23,5	10	6	9,6	51,0
P1KPL-63	G1/8	17,5	17,1	35	74	213,5	245,5	32	32				45	23,5	13	8	9,6	60,0

Cylinder bore	S	T	U	V	Y	Z	AA	BB	CC	DD	EE	FF	GG	HH	II	KK	LL
P1KP-40	10	9	M12X1,25	16	5		17	58	24	36,8	45	47,8					14
P1KP-50	10	9	M16X1,5	20	5		17	63	29	46,7	56	58,7					17
P1KP-63	10	9	M16X1,5	20	6		17	70	36	55,9	70	70,9					17
P1KPL-40	10	9	M12X1,25	16	5	29	17	58	24	36,8	45	47,8	6	11	2,5	55	14
P1KPL-50	10	9	M16X1,5	20	5	36	17	63	29	46,7	56	58,7	6	11	2,5	65	17
P1KPL-63	10	9	M16X1,5	20	6	37	17	70	36	55,9	70	70,9	6	13	2,5	75	17

Cylinder bore	MM	NB	NN	NV	ZZ	Assembly tolerances			Stroke length tolerances		
						g	h	k	x	0-500 (at 6 bar)	
P1KP-40		6		19					+1,5/-1,8	+1,5/-0,5	+2,5/+0,5
P1KP-50		8		24					+1,6/-1,3	+1,3/-0,7	+2,5/+1,0
P1KP-63		8		24					+1,6/-1,3	+1,3/-0,7	+2,5/+1,0
P1KPL-40	M6	6	11,5	19	10				+1,5/-1,8	+2,2/-0,6	+2,5/+0,5
P1KPL-50	M6	8	11,5	24	12				+1,6/-1,3	+2,1/-0,8	+2,5/+1,0
P1KPL-63	M6	8	14	24	18				+1,6/-1,3	+2,1/-0,8	+2,5/+1,0

Dimensions, mountings

Clevis bracket MP4

	Cyl. bore	A	B	C	D	E	F	G	H	I	K	K _L	K _P	K _{PL}
<p>Double acting: K+S Single acting: K+ 2xS</p>	32	48	22	33	26	10	10	11	15,0	22	97	162,5		
	40	54	24	35	28	12	12	12	21,0	28	106	173,5	169,0	237,0
	50	64	32	39	32	12	12	13	19,5	28	113	187,5	181,5	256,5
	63	76	39	47	40	16	16	17	26,0	36	122	213,5	189,5	281,5
	80	94	48	57	50	16	16	17	26,0	38	139	249,5		
	100	110	62	67	60	20	20	21	29,0	43	151	282,5		
	125	135	70	77	70	25	25	26	35,0	50	165,5			

S=stroke

Clevis bracket MP2

	Cyl. bore	A	B	C	D	E	F	G	H	I	K	K _L	K _P	K _{PL}
<p>Double acting: K+S Single acting: K+ 2xS</p>	32	48	22	52	45	26	10	11	15,0	22	97	162,5		
	40	54	24	59	52	28	12	12	21,0	28	106	173,5	169,0	237,0
	50	64	32	67	60	32	12	13	19,5	28	113	187,5	181,5	256,5
	63	76	39	77	70	40	16	17	26,0	36	122	213,5	189,5	281,5
	80	94	48	97	90	50	16	17	26,0	38	139	249,5		
	100	110	62	117	110	60	20	21	29,0	43	151	282,5		
	125	135	70	137	130	70	25	26	35,0	50	165,5			

S=stroke

Swivel eye bracket

	Cyl. bore	A	B	C	D	F	G	H	I	K	K _L	K _P	K _{PL}
<p>Double acting: K+S Single acting: K+ 2xS</p>	32	48	9	7,5	13,0	10	12,5	15,0	22	97	162,5		
	40	54	12	9,0	15,5	12	15,5	21,0	28	106	173,5	169,0	237,0
	50	64	12	9,0	15,5	12	16,5	19,5	28	113	187,5	181,5	256,5
	63	76	16	12,5	20,0	16	19,5	26,0	36	122	213,5	189,5	281,5
	80	94	16	12,5	20,0	16	21,5	26,0	38	139	249,5		
	100	110	20	16,0	25,0	20	25,5	29,0	43	151	282,5		
	125	135	25	20,5	30,5	25	30,0	35,0	50	165,5			

S=stroke

Angle bracket MS1

Cyl. bore	A	B	C	D	E	F	G	H
32	48	32	5,0	32	53	7	24	32
40	54	36	5,0	36	60	9	31	42
50	64	45	6,0	45	75	9	33	45
63	76	50	6,0	50	86	9	36	48
80	94	63	8,0	63	107	12	43	58
100	110	75	10,5	71	122	14	43	60
125	135	90	12,5	90	157	16	45	70

Cyl. bore	I	I _L	I _P	I _{PL}	K	K _L	K _P	K _{PL}
32	113	167,5			99	164,5		
40	127	184,5	190,0	248,0	109	176,5	172,0	240,0
50	137	199,5	205,5	268,5	118	192,5	186,5	261,5
63	144	217,5	211,5	285,5	122	213,5	189,5	281,5
80	171	266,5			144	254,5		
100	173	290,5			151	282,5		
125	184,5	-			160,5	-		

S=stroke

Flange MF1 and MF2

Cyl. bore	A	B	C	D	E	F
32	80	64	48	32	7	10
40	90	72	54	36	9	13
50	110	90	64	45	9	13
63	120	100	76	50	9	16
80	155	126	94	63	12	18
100	180	150	110	75	14	18
125	220	180	135	90	16	20

Cyl. bore	G	G _L	G _P	G _{PL}	H	H _L	H _P	H _{PL}	I
32	0	11			85	150,5			27
40	0	10	0	10	91	158,5	154,0	222,0	32
50	1	13	1	13	98	172,5	166,5	241,5	40
63	-2	16	-2	16	102	193,5	169,5	261,5	40
80	-2	13			119	229,5			50
100	3	17			126	257,5			60
125	1	-			135,5	-			72

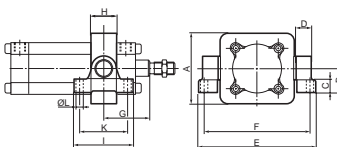
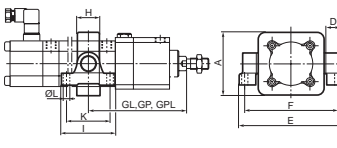
S=stroke

Centre trunnion MT4

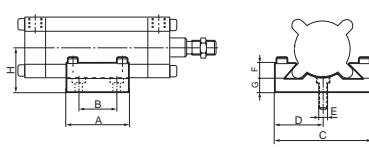
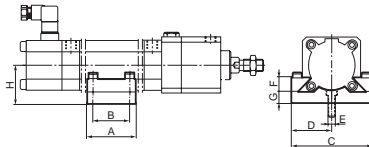
Cyl. bore	A	B	C	D	E	F	G _{min} *	G _{Lmin} *	G _{Pmin} *	G _{PLmin} *	H
32	55	12	50	12	49	74	45	111			25
40	65	16	63	16	61	95	48	116	48	116	25
50	75	16	75	16	73	107	49	124	49	124	30
63	90	20	90	20	88	130	54	146	54	146	35
80	110	20	110	20	108	150	66	177			40
100	132	25	132	25	130	182	71	203			45
125	160	25	160	25	158	210	81	-			55

*G ± 2 mm

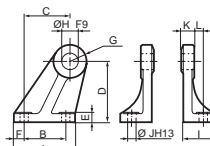
Pivot bracket

	Cyl. bore	A	B	C	D	E	F	G _{min}	G _{Lmin}	G _{Pmin}	G _{PLmin}	H	I	K	L
	32	55	21	10	12	88	78	45	111			25	37	27	5,5
	40	65	22	11	16	103	91	48	116	48	116	25	55	44	6,6
	50	75	35	14	16	125	106	49	124	49	124	30	82	65	9,0
	63	90	40	16	20	156	134	54	146	54	146	35	99	80	9,0
	80	110	48	18	20	178	152	66	177			40	118	96	11,0
	100	132	48	22	25	206	182	71	203			45	118	96	11,0
	125	160	48	22	25	234	210	81	-			55	118	96	11,0
															

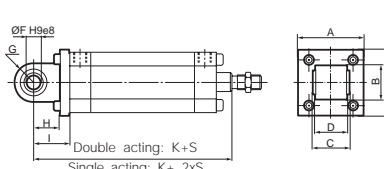
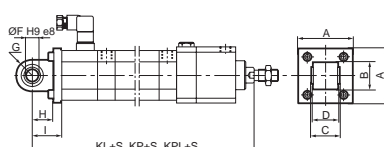
Adjustable barrel bracket

	Cyl. bore	A	B	C	D	ØE	F	G	H	H tol.
	32	40	30	70	35,0	5,8	13,5	10,5	32	+1,0 -0,5
	40	50	30	77	39,0	6,8	12,5	11,5	36	+1,0 -0,5
	50	60	30	93	46,5	8,8	13,5	15,5	45,5	+1,1 -0,5
	63	70	40	112	56,0	10,8	16,5	18,5	54,5	+1,1 -0,5
										

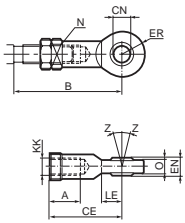
Pivot bracket

	Cyl. bore	A	B	C	D	E	F	G	H	I	J	K	L
	32	30,5	18	21	32	6	6,0	9,5	10	17,5	5,5	5,5	6,0
	40	34,5	22	24	36	6	6,0	10,5	12	18,0	5,5	5,5	6,5
	50	44,5	30	33	45	8	7,0	12,5	12	23,0	6,6	7,5	9,0
	63	49,5	35	37	50	9	7,0	14,5	16	21,5	6,6	9,0	6,0
	80	59,0	40	47	63	10	9,5	14,5	16	30,5	9,0	14,0	8,0
	100	69,0	50	55	71	10	9,5	18,5	20	33,0	9,0	17,0	8,0

Swivel mount with rubber bushing

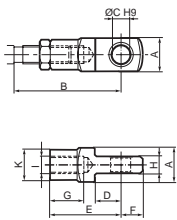
	Cyl. bore	A	B	C	D	F	G	H	I	K	K _L	K _P	K _{PL}
 <p>Double acting: K+S Single acting: K+ 2xS</p>	40	54	31	27,0	22	12	15,5	21,0	28	106	173,5	169,0	237,0
	50	64	31	31,0	26	12	15,5	19,5	28	113	187,5	181,5	256,5
	63	76	43	39,5	35	16	21,5	26,0	36	122	213,5	189,5	281,5
 <p>KL+S, KP+S, KPL+S</p>													

Swivel rod eye



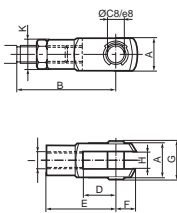
Cyl. bore	A	B min	B max	CE	CN H9	EN h12	ER	KK	LE min	N	O	Z
32	20	48,0	55	43	10	14	14	M10x1,25	15	17	10,5	12°
40	22	56,0	62	50	12	16	16	M12x1,25	17	19	12,0	12°
50	28	72,0	80	64	16	21	21	M16x1,5	22	22	15,0	15°
63	28	72,0	80	64	16	21	21	M16x1,5	22	22	15,0	15°
80	33	87,0	97	77	20	25	25	M20x1,5	26	32	18,0	15°
100	33	87,0	97	77	20	25	25	M20x1,5	26	32	18,0	15°
125	51	123,5	137	110	30	37	35	M27x2	36	41	25,0	15°

Piston rod eye



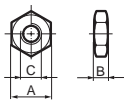
Cyl. bore	A	B _{min}	B _{max}	C	D	E	F	G	H	I	K
32	20	46	52	10	15	40	12	16	10	M10x1,25	18
40	24	55	61	12	18	48	14	17	12	M12x1,25	20
50	32	72	80	16	24	64	19	24	16	M16x1,5	26
63	32	72	80	16	24	64	19	24	16	M16x1,5	26
80	40	89	100	20	30	80	25	31	20	M20x1,5	34
100	40	89	100	20	30	80	25	31	20	M20x1,5	34

Clevis



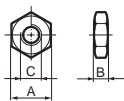
Cyl. bore	A	B min	B max	CE	CK h11/E9	CL	CM	ER	KKLE	M	O	
32	20	45,0	52	40	10	20	10	16	M10x1,25	20	5,0	28,0
40	24	54,0	60	48	12	24	12	19	M12x1,25	24	6,0	32,0
50	32	72,0	80	64	16	32	16	25	M16x1,5	32	8,0	41,5
63	32	72,0	80	64	16	32	16	25	M16x1,5	32	8,0	41,5
80	40	90,0	100	80	20	40	20	32	M20x1,5	40	10,0	50,0
100	40	90,0	100	80	20	40	20	32	M20x1,5	40	10,0	50,0
125	56	123,5	137	110	30	55	30	45	M27x2	54	13,5	72,0

Rod nut



Cyl. bore	A	B	C
32	17	5	M10x1,25
40	19	6	M12x1,25
50	24	8	M16x1,5
63	24	8	M16x1,5
80	30	10	M20x1,5
100	30	10	M20x1,5
125	41	12	M27x2

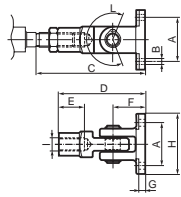
Stainless steel rod nut



Cyl. bore	A	B	C
32	17	5	M10x1,25
40	19	6	M12x1,25
50	24	8	M16x1,5
63	24	8	M16x1,5
80	30	10	M20x1,5
100	30	10	M20x1,5
125	41	12	M27x2

Piston rod eye and Clevis bracket MP4

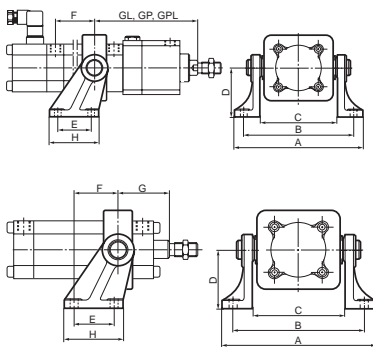
Cyl. bore	A	B	C _{min}	C _{max}	D	E	F	G	H	I	L
32	32,5	5,5	68	76	62	16	22	7	48	M10x1,25	208°
40	36,8	6,6	83	90	76	17	28	7	54	M12x1,25	223°
50	55,9	9,0	100	111	92	24	28	10	76	M16x1,5	212°
63	55,9	9,0	108	119	100	24	36	10	76	M16x1,5	217°
80	84,1	11,0	127	142	118	31	38	14	110	M20x1,5	210°
100	84,1	11,0	132	147	123	31	43	14	110	M20x1,5	205°



Pivot bracket and Centre trunnion MT4

Cyl. bore	A	B	C	D	E	F	G _{min} *	G _{Lmin} *	G _{Pmin} *	G _{PLmin} *	H _m
32	87	74	50	36	22	24	45	111			34,5
32	98	83	50	45	30	33	45	111			44,5
40	108	93	63	50	35	37	48	116	48	116	49,5
40	127	107	63	63	40	47	48	116	48	116	59,0
50	120	105	75	50	35	37	49	124	49	124	49,5
50	139	119	75	63	40	47	49	124	49	124	59,0
63	160	140	90	71	50	55	54	146	54	146	69,0
80	180	160	110	71	50	55	66	177			69,0

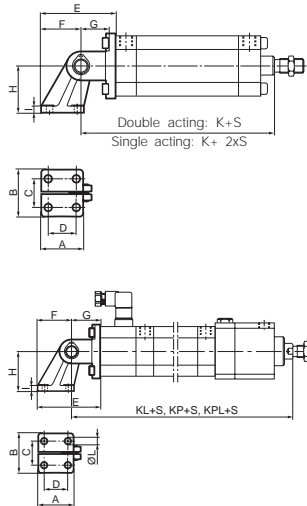
* G ± 2 mm



Pivot bracket and Clevis bracket MP2

Cyl. bore	A	B	C	D	E	F	G	H	I	K	K _L	K _P	K _{PL}
32	30,5	50	38	18	49,5	27,5	16,0	32	6	97	162,5		
40	34,5	53	41	22	58,5	30,5	21,0	36	6	106	173,5	169,0	237,0
50	44,5	63	50	30	68,5	40,5	19,5	45	8	113	187,5	181,5	256,5
63	49,5	65	52	35	80,5	44,5	26,0	50	9	122	213,5	189,5	281,5
80	59,0	83	66	40	95,0	57,0	26,0	63	10	139	249,5		
100	70,0	92	76	50	108,0	65,0	29,0	71	10	151	282,5		

S = Stroke



Pivot bracket and Swivel eye bracket

	Cyl. bore	A	B	C	D	E	F	G	H	I	K	K _L	K _P	K _{PL}
	32	30,5	44	32	18	49,5	27,5	15,0	32	6	97	162,5		
	40	34,5	48	36	22	58,5	30,5	21,0	36	6	106	173,5	169,0	237,0
	50	44,5	58	45	30	68,5	40,5	19,5	45	8	113	187,5	181,5	256,5
	63	49,5	59	46	35	80,5	44,5	26,0	50	9	122	213,5	189,5	281,5
	80	59,0	77	60	40	95,0	57,0	26,0	63	10	139	249,5		
	100	70,0	86	70	50	108,0	65,0	29,0	71	10	151	282,5		
S=stroke														

Tightening torques

Tighten the bolts used with mountings to the following torques.
When using other mounting fittings, the following metal thickness apply when using the cylinder's end cover bolts.

Cylinder bore mm	Tightening torque Nm	Maximum metal thickness mm
32	4,5±0,5	7,0
40	8±0,8	7,0
50	8±0,8	8,5
63	20±2	10,0
80	40±4	12,0
100	40±4	14,0

Note the following for P1KP, P1KPL and P1KL

Take care when fitting mounts to the rear end cover. If the terminal box cover has been removed, check that the cables are not trapped between it and the rear end cover. The bolts supplied with the mount are intended to be used with the front end cover (the piston rod locking unit) on the P1KL and P1KPL.